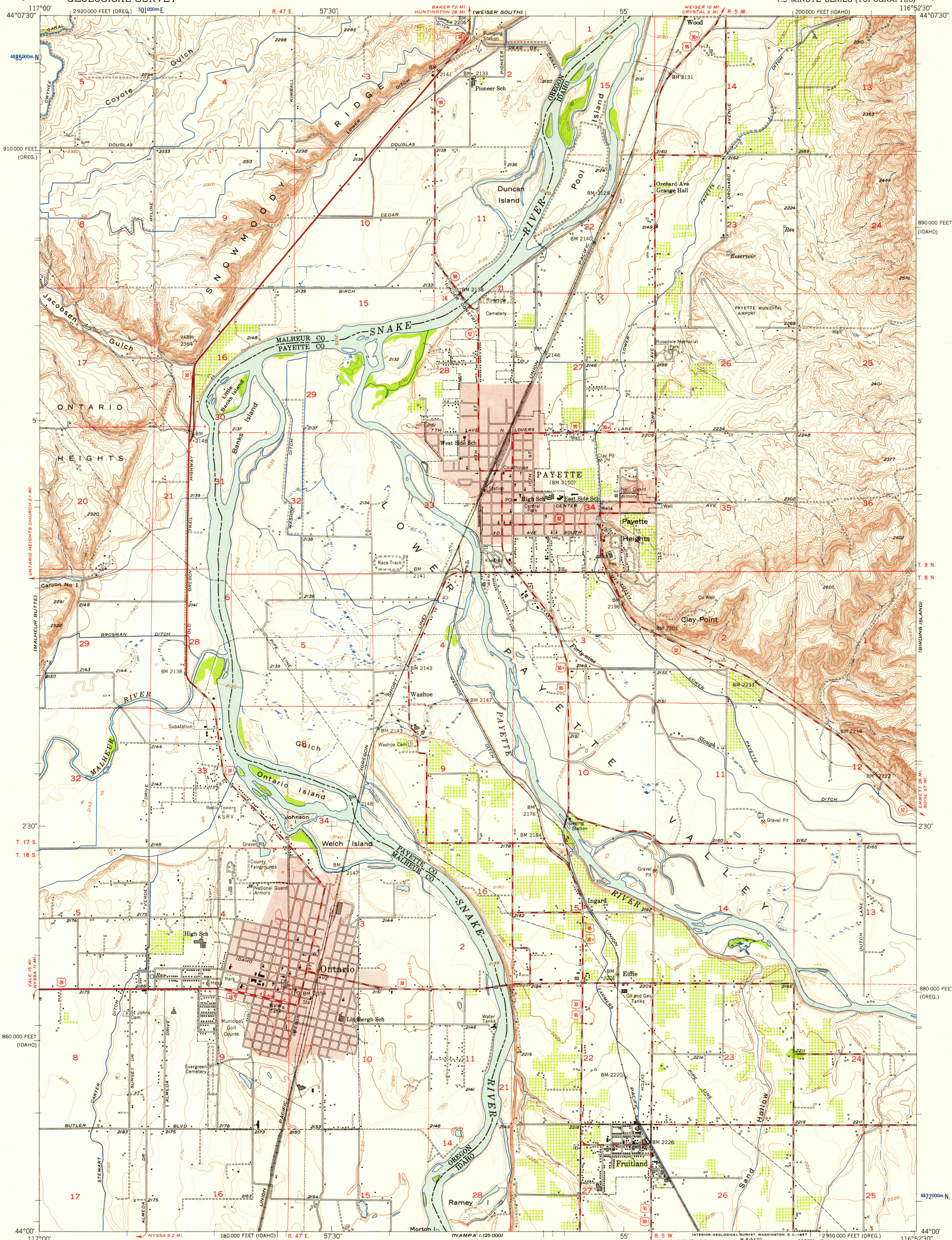


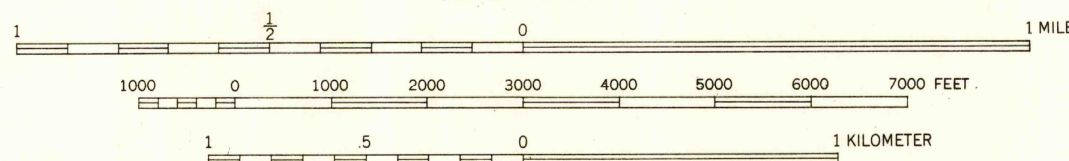
UNITED STATES  
DEPARTMENT OF THE INTERIOR  
GEOLOGICAL SURVEY

PAYETTE QUADRANGLE  
IDAHO-OREGON  
7.5 MINUTE SERIES (TOPOGRAPHIC)



Mapped, edited, and published by the Geological Survey  
Control by USGS and USC&GS  
Topography from aerial photographs by photogrammetric methods and  
by plane-table surveys 1951. Aerial photographs taken 1946 and 1950  
Polyconic projection. 1927 North American datum  
10,000-foot grids based on Idaho coordinate system, west zone,  
and Oregon coordinate system, south zone  
Red tint indicates areas in which only landmark buildings are shown  
Dashed land lines indicate approximate locations  
1000-meter Universal Transverse Mercator grid ticks,  
zone 11, shown in blue

APPROXIMATE MEAN  
DECLINATION, 1951



CONTOUR INTERVAL 10 FEET  
DOTTED LINES REPRESENT HALF-INTERVAL CONTOURS  
DATUM IS MEAN SEA LEVEL

THIS MAP COMPLIES WITH NATIONAL MAP ACCURACY STANDARDS  
FOR SALE BY U. S. GEOLOGICAL SURVEY, FEDERAL CENTER, DENVER, COLORADO OR WASHINGTON 25, D. C.  
A FOLDER DESCRIBING TOPOGRAPHIC MAPS AND SYMBOLS IS AVAILABLE ON REQUEST

USGS  
Historical File  
Topographic Division

U.S.G.S.  
FILE COPY  
TOPOGRAPHIC DIVISION

ROAD CLASSIFICATION  
Heavy-duty 4 LANE 16 LANE Light-duty  
Medium-duty 4 LANE 16 LANE Unimproved dirt  
U. S. Route State Route

PAYETTE, IDAHO-OREGON  
N4400-W11652.5/7.5

1951

USGS  
FILE COPY  
TOPOGRAPHIC DIVISION

JUL 26 1957

3615