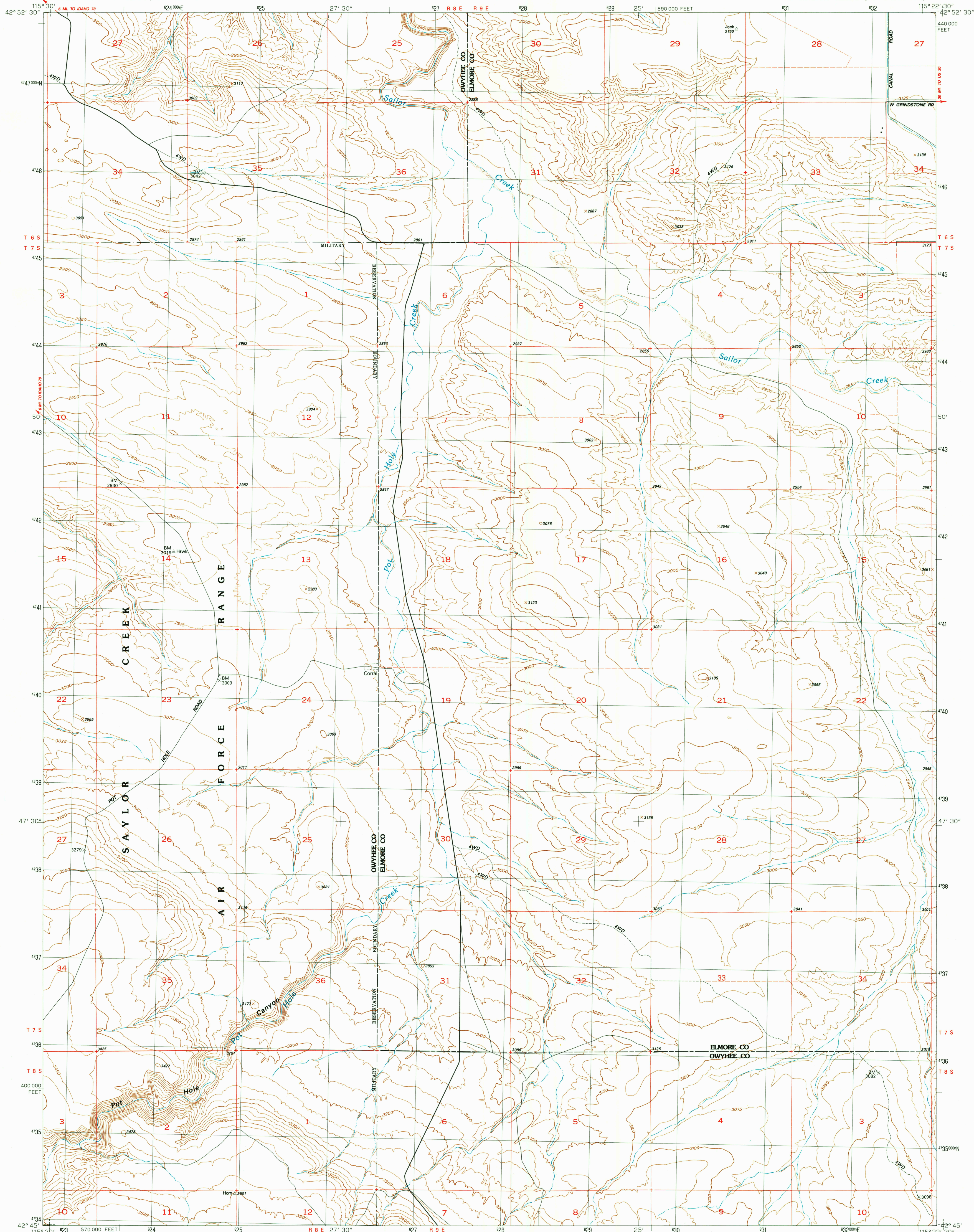
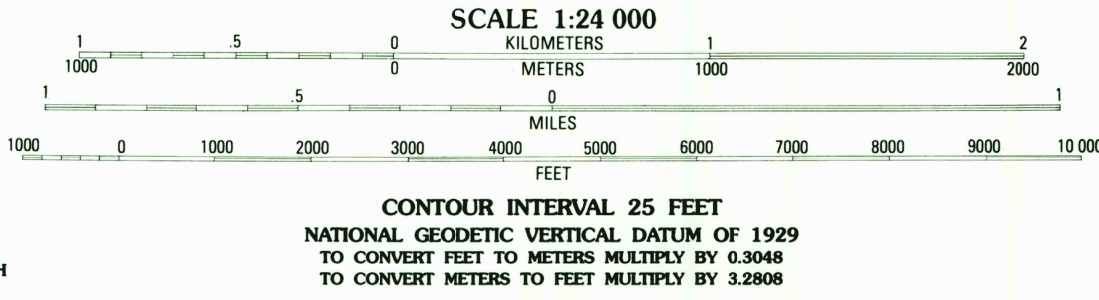
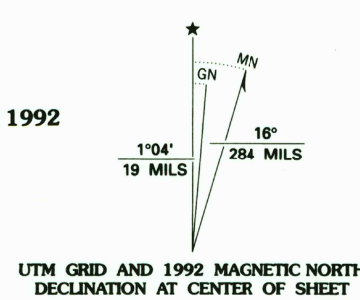


DEPARTMENT OF THE INTERIOR  
UNITED STATES GEOLOGICAL SURVEY

POT HOLE CANYON QUADRANGLE  
IDAHO  
7.5 MINUTE SERIES (TOPOGRAPHIC)



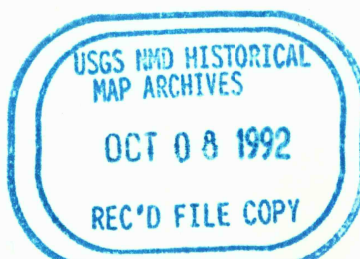
Produced by the United States Geological Survey  
Control by USGS and NOS/NOAA  
Compiled from aerial photographs taken 1946. Revised from aerial photographs taken 1987 and 1988. Field checked 1989. Map edited 1992  
North American Datum of 1927 (NAD 27). Projection and 10,000-foot grid ticks: Idaho Coordinate System, west zone (Transverse Mercator). 1000-meter Universal Transverse Mercator grid, zone 11.  
The difference between NAD 27 and North American Datum of 1983 (NAD 83) for 7.5 minute intersections is given in USGS Bulletin 1875. The NAD 83 is shown by dashed corner ticks  
There may be private inholdings within the boundaries of the National or State reservations shown on this map  
Fine red dashed lines indicate selected fence and field lines where generally visible on aerial photographs. This information is unchecked



ROAD CLASSIFICATION  
Primary highway, hard surface ..... Light-duty road, hard or improved surface .....  
Secondary highway, hard surface ..... Unimproved road .....  
Interstate Route U. S. Route State Route

1	2	3	1 Indian Cove
4	5	2 Hammett	
6	7	3 Glenn Ferry	
		4 Pence Butte	
		5 Grindstone Butte	
		6 Pot Hole Butte	
		7 Black Butte West	
		8 Black Butte East	

POT HOLE CANYON, IDAHO  
42115-G4-TF-024  
1992  
DMA 2969 IV SW-SERIES V893



THIS MAP COMPLIES WITH NATIONAL MAP ACCURACY STANDARDS  
FOR SALE BY U.S. GEOLOGICAL SURVEY  
DENVER, COLORADO 80225 OR RESTON, VIRGINIA 22092  
A FOLDER DESCRIBING TOPOGRAPHIC MAPS AND SYMBOLS IS AVAILABLE ON REQUEST