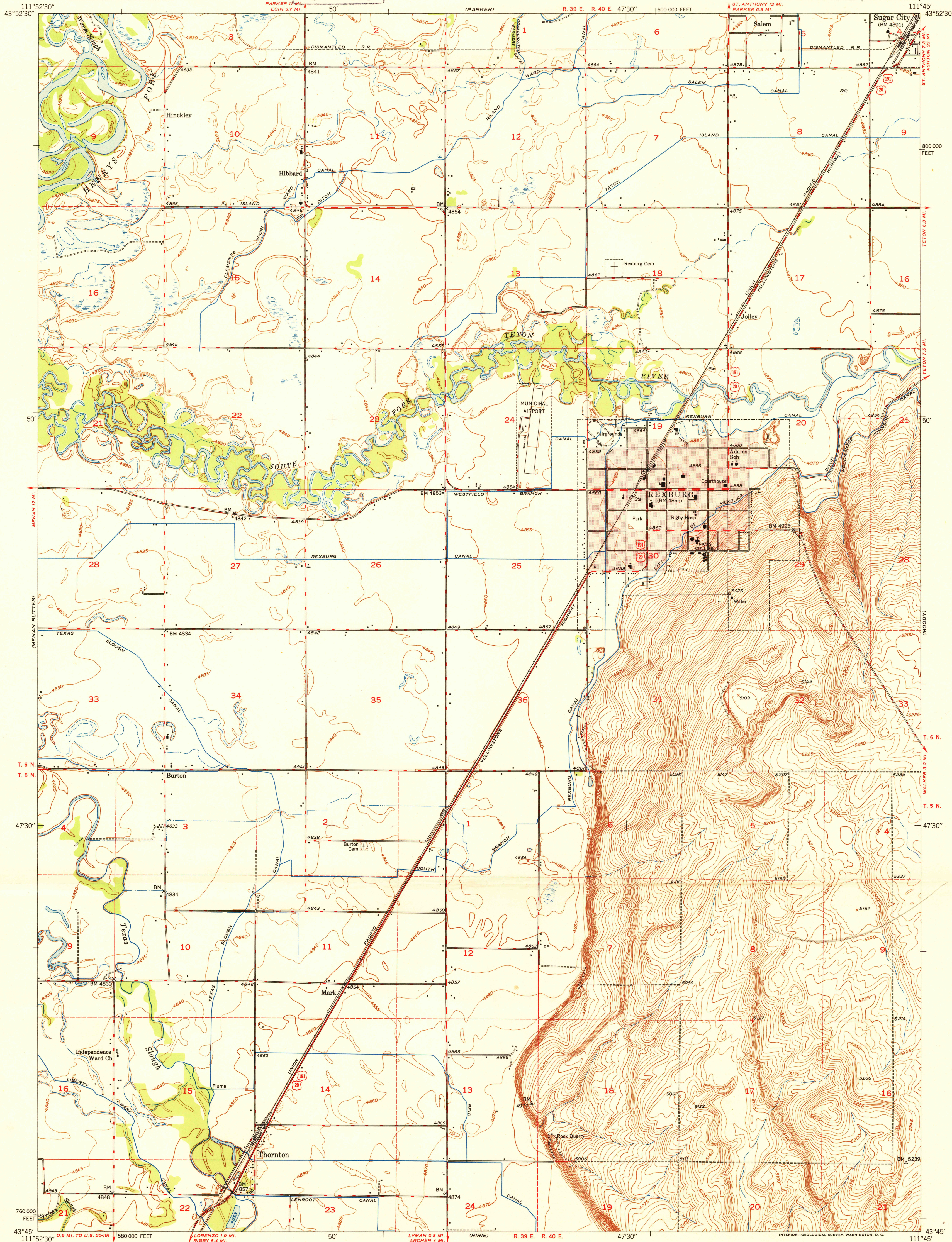


UNITED STATES
DEPARTMENT OF THE INTERIOR
GEOLOGICAL SURVEY

U.S.G.S.
FILE COPY
Inspection and Editing

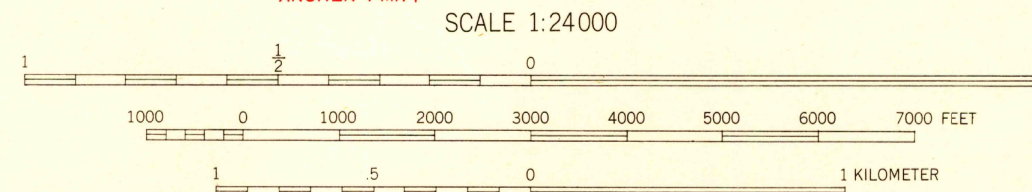
REXBURG QUADRANGLE
IDAHO-MADISON CO.
7.5 MINUTE SERIES (TOPOGRAPHIC)

111°52'30"
43°52'30"



Maped, edited, and published by the Geological Survey
Control by USGS and USC&GS
Culture and drainage by multiple methods
from aerial photographs taken 1946
Topography by plane-table methods 1949
Polyconic projection. 1927 North American datum
10,000-foot grid based on Idaho coordinate system,
east zone
Red tint indicates area in which only
landmark buildings are shown
Dashed land lines indicate approximate location

TRUE NORTH
MAGNETIC NORTH
APPROXIMATE MEAN
DECLINATION, 1949



CONTOUR INTERVAL 5 FEET
DATUM IS MEAN SEA LEVEL

THIS MAP COMPLIES WITH NATIONAL MAP ACCURACY STANDARDS
FOR SALE BY U.S. GEOLOGICAL SURVEY, FEDERAL CENTER, DENVER, COLORADO OR WASHINGTON 25, D. C.
A FOLDER DESCRIBING TOPOGRAPHIC MAPS AND SYMBOLS IS AVAILABLE ON REQUEST

ROAD CLASSIFICATION
HARD-SURFACE ALL WEATHER ROADS
Heavy-duty... 4 LANE IS LANE
Medium-duty... 4 LANE IS LANE
Loose-surface, graded, or narrow hard-surface...
U. S. Route
State Route
DRY WEATHER ROADS
Improved dirt...
Unimproved dirt...
T. 6 N.
T. 5 N.

REXBURG, IDAHO
N4345-W11145/7.5
EDITION OF 1950

U.S.G.S.
FILE COPY
Inspection and Editing