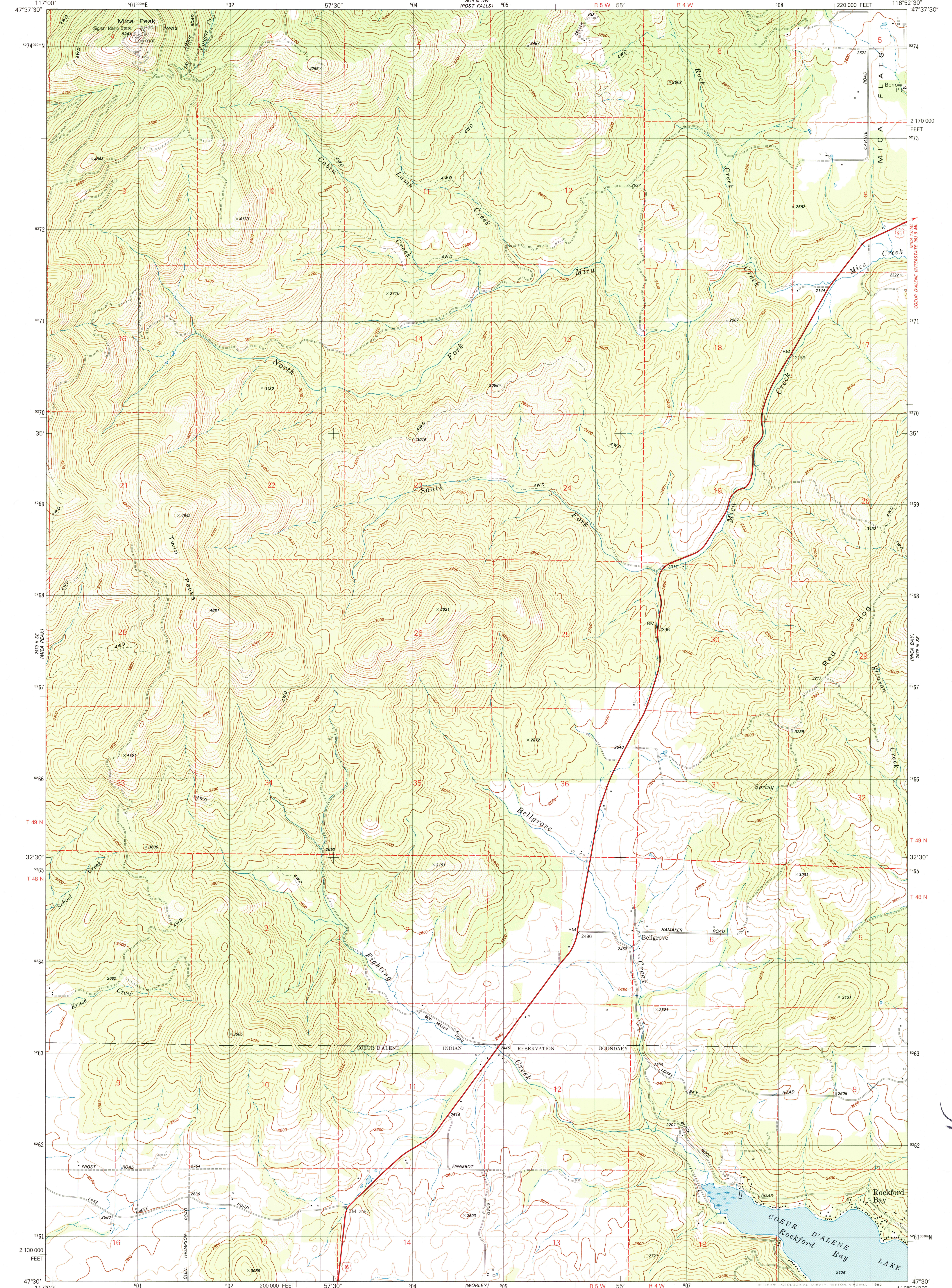


2679 III SW  
(WORLEY LAKE)

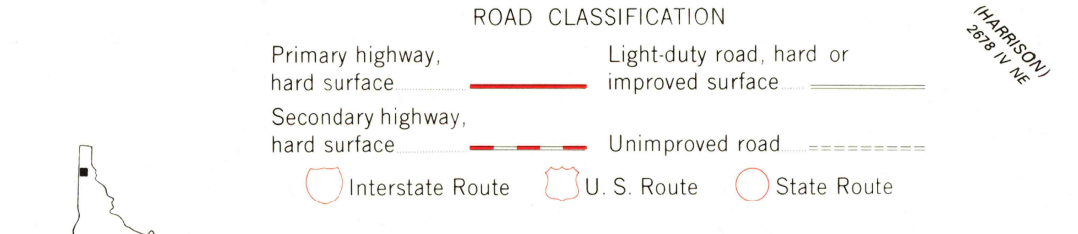
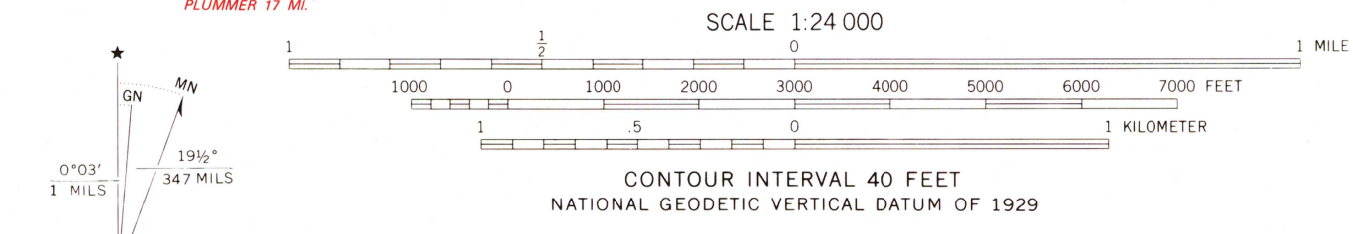
UNITED STATES  
DEPARTMENT OF THE INTERIOR  
GEOLOGICAL SURVEY

ROCKFORD BAY QUADRANGLE  
IDAHO-KOOTENAI CO.  
7.5 MINUTE SERIES (TOPOGRAPHIC)  
SW/4 COEUR D'ALENE 15' QUADRANGLE

2679 III NW  
(COEUR D'ALENE)



Mapped, edited, and published by the Geological Survey  
Control by USGS and NOS/NOAA  
Topography by photogrammetric methods from aerial photographs taken 1975. Field checked 1976. Map edited 1981  
Projection and 10,000-foot grid ticks: Idaho coordinate system, west zone (transverse Mercator)  
1000-meter Universal Transverse Mercator grid, zone 11 1927 North American Datum  
To place on the predicted North American Datum 1983 move the projection lines 14 meters north and 78 meters east as shown by dashed corner ticks  
Fine red dashed lines indicate selected fence and field lines where generally visible on aerial photographs  
This information is unchecked  
There may be private inholdings within the boundaries of the National or State reservations shown on this map



ROCKFORD BAY, IDAHO  
SW/4 COEUR D'ALENE 15' QUADRANGLE  
N4730-W11652.5/7.5  
1981  
DMA 2679 III SW-SERIES V893

200 HISTORICAL  
ARCHIVES  
AUG 20 1996  
REC'D FILE COPY

