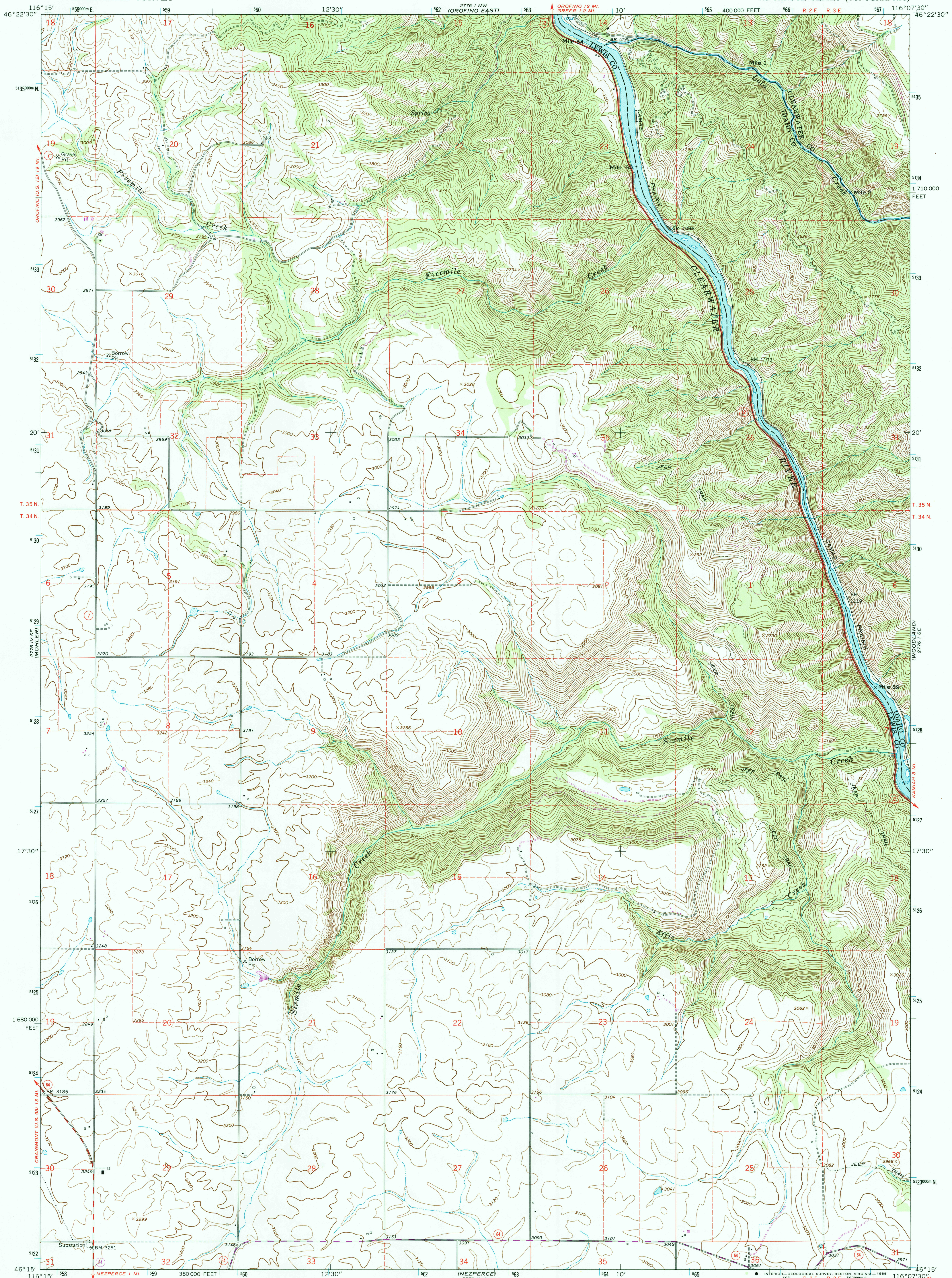


UNITED STATES  
DEPARTMENT OF THE INTERIOR  
GEOLOGICAL SURVEY

SIXMILE CREEK QUADRANGLE  
IDAHO  
7.5 MINUTE SERIES (TOPOGRAPHIC)



Mapped, edited, and published by the Geological Survey  
Control by USGS and NOS/NOAA

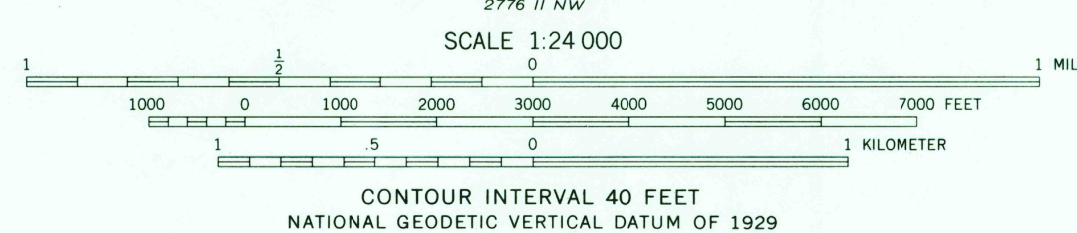
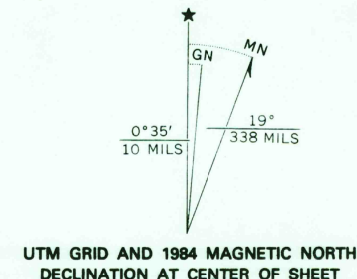
Topography by photogrammetric methods from aerial  
photographs taken 1966. Field checked 1967

Polyconic projection. 1927 North American datum  
10,000-foot grid based on Idaho coordinate system,  
west zone  
1000-meter Universal Transverse Mercator grid ticks,  
zone 11, shown in blue

To place on the predicted North American Datum 1983  
move the projection lines 15 meters north and  
76 meters east as shown by dashed corner ticks

Fine red dashed lines indicate selected fence lines

Entire area lies within the boundary  
of the Nez Perce Indian Reservation



ROAD CLASSIFICATION	
Heavy-duty	Light-duty
Medium-duty	Unimproved dirt
U.S. Route	State Route

THIS MAP COMPLIES WITH NATIONAL MAP ACCURACY STANDARDS  
FOR SALE BY U. S. GEOLOGICAL SURVEY, DENVER, COLORADO 80225, OR RESTON, VIRGINIA 22092  
A FOLDER DESCRIBING TOPOGRAPHIC MAPS AND SYMBOLS IS AVAILABLE ON REQUEST

Revisions shown in purple and woodland compiled from  
aerial photographs taken 1982 and other sources.  
Partial field check by U.S. Forest Service. Map edited 1984

SIXMILE CREEK, IDAHO  
N4615-W11607.5/7.5

1967  
PHOTOREVISED 1984  
DMA 2776 I SW-SERIES V893