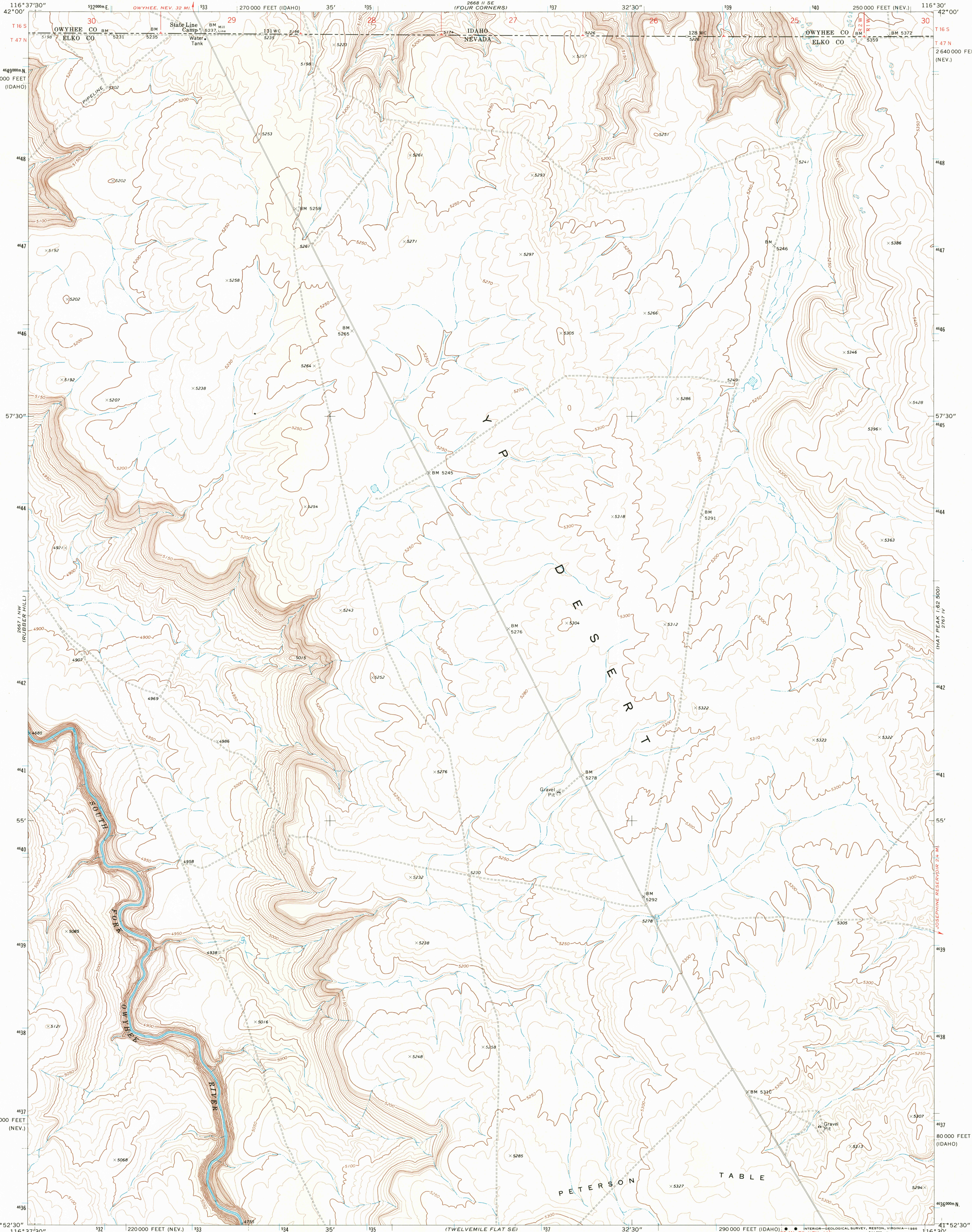


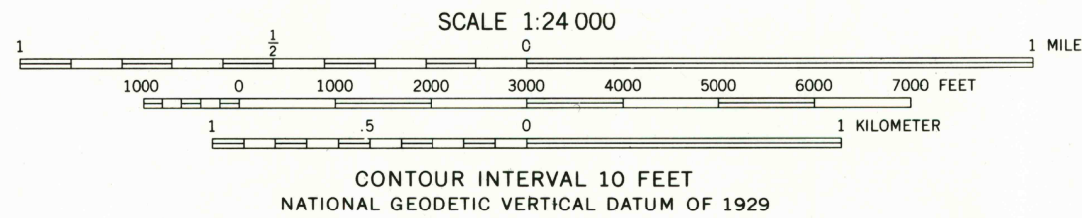
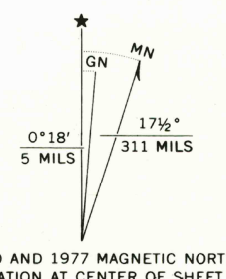
UNITED STATES
DEPARTMENT OF THE INTERIOR
GEOLOGICAL SURVEY

STATE LINE CAMP QUADRANGLE
IDAHO-NEVADA
7.5 MINUTE SERIES (TOPOGRAPHIC)



Mapped, edited, and published by the Geological Survey

Control by USGS and NOS/NOAA
Topography by photogrammetric methods from aerial photographs taken 1972. Field checked 1973
Projection: Nevada coordinate system, east zone (transverse Mercator)
10,000-foot grid ticks based on Nevada coordinate system, east zone and Idaho coordinate system, west zone
1000-meter Universal Transverse Mercator grid ticks, zone 11, shown in blue. 1927 North American datum
To place on the predicted North American Datum 1983 move the projection lines 15 meters north and 78 meters east as shown by dashed corner ticks
Fine red dashed lines indicate selected fence lines
Certain land lines are omitted because of insufficient



ROAD CLASSIFICATION	
Primary highway, hard surface	Light-duty road, hard or improved surface
Secondary highway, hard surface	Unimproved road
Interstate Route	U. S. Route
	State Route

STATE LINE CAMP, IDAHO-NEV
41116-H5-TF-024

1977

DMA 2667 1 NE-SERIES V896

