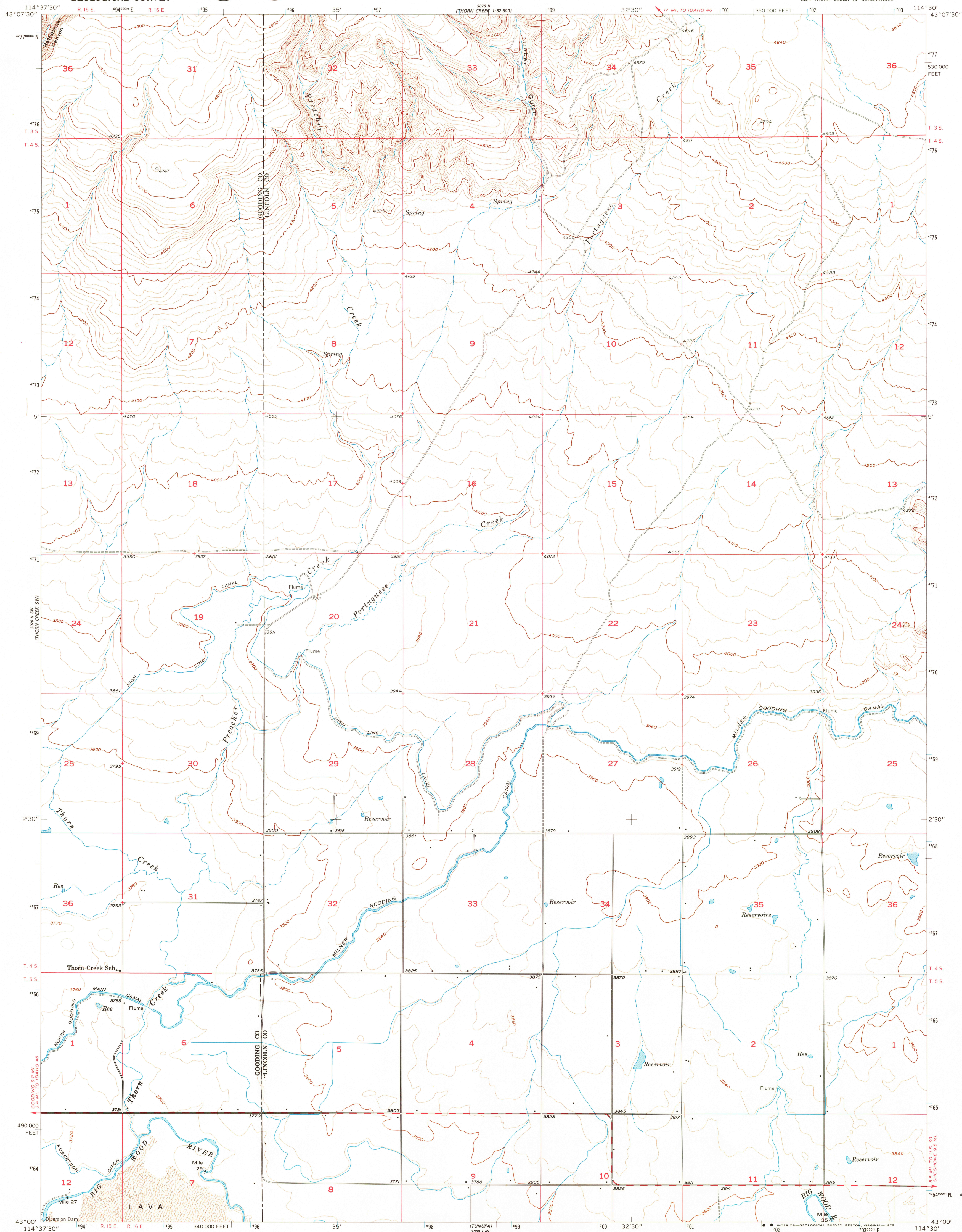


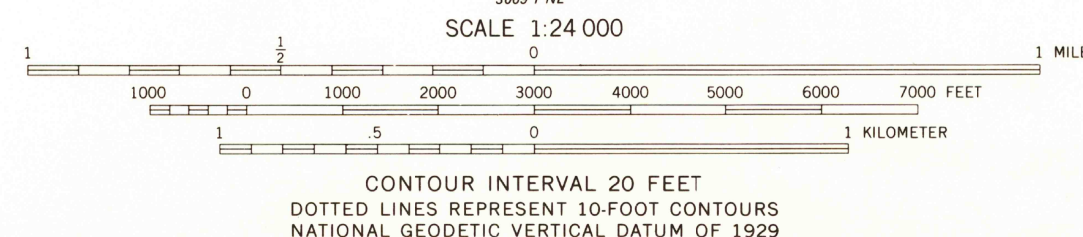
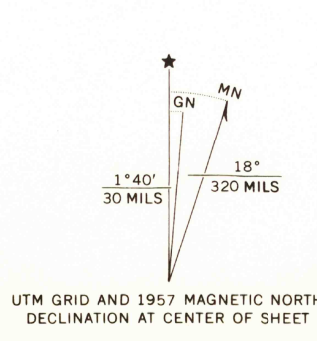
UNITED STATES
DEPARTMENT OF THE INTERIOR
GEOLOGICAL SURVEY



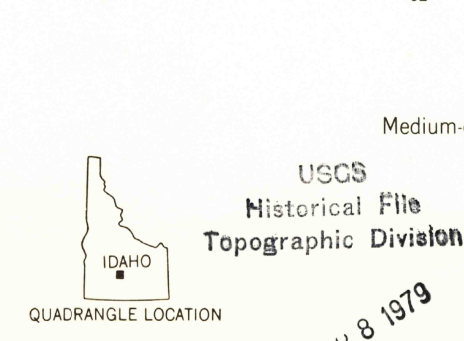
THORN CREEK SE QUADRANGLE
IDAHO
7.5 MINUTE SERIES (TOPOGRAPHIC)
SE/4 THORN CREEK 15' QUADRANGLE



Maped, edited, and published by the Geological Survey
Control by USGS and USC&GS
Topography from aerial photographs by Kelsh plotter
Aerial photographs taken 1954. Field check 1957
Polyconic projection. 1927 North American datum
10,000-foot grid based on Idaho coordinate system,
central zone
1000-meter Universal Transverse Mercator grid ticks,
zone 11, shown in blue
Map photoinspected 1976
No major culture or drainage changes observed



THIS MAP COMPLIES WITH NATIONAL MAP ACCURACY STANDARDS
FOR SALE BY U. S. GEOLOGICAL SURVEY, DENVER, COLORADO 80225, OR RESTON, VIRGINIA 22092
A FOLDER DESCRIBING TOPOGRAPHIC MAPS AND SYMBOLS IS AVAILABLE ON REQUEST



THORN CREEK SE, IDAHO
SE/4 THORN CREEK 15' QUADRANGLE
N4300-W11430/7.5

1957
PHOTOINSPECTED 1976
DMA 3070 II SE-SERIES 893

1350