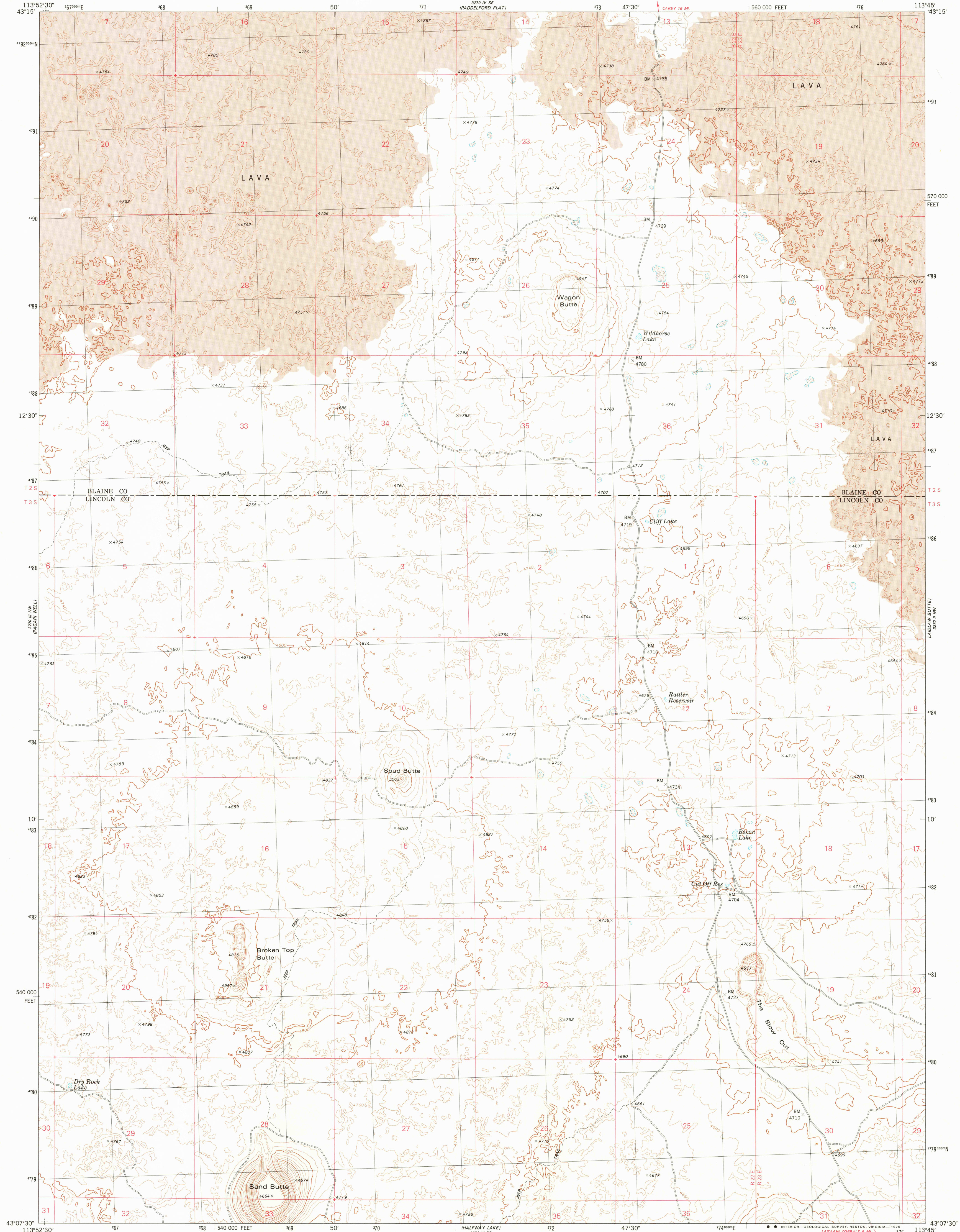


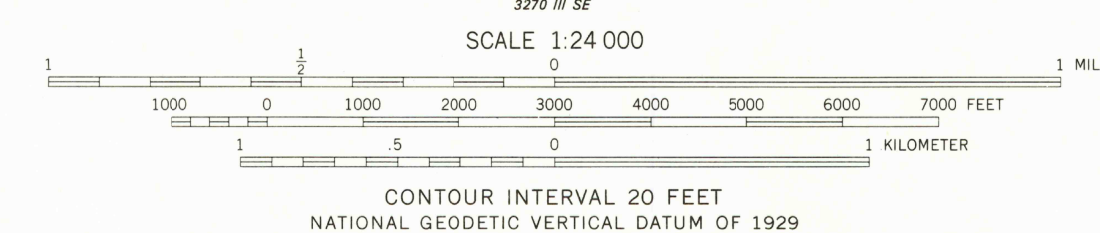
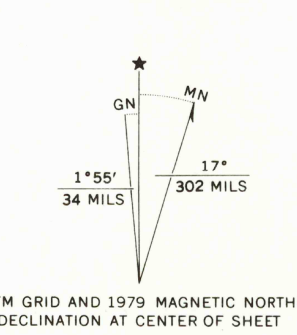
UNITED STATES
DEPARTMENT OF THE INTERIOR
GEOLOGICAL SURVEY



WAGON BUTTE QUADRANGLE
IDAHO
7.5 MINUTE SERIES (TOPOGRAPHIC)



Mapped, edited, and published by the Geological Survey
Control by USGS and NOS/NOAA
Topography by photogrammetric methods from aerial
photographs taken 1971. Field checked 1973
Map edited 1979
Projection and 10,000-foot grid ticks: Idaho coordinate
system, central zone (transverse Mercator)
1000-meter Universal Transverse Mercator grid, zone 12
1927 North American datum
To place on the predicted North American Datum 1983
move the projection lines 13 meters north and
70 meters east as shown by dashed corner ticks
Fine red dashed lines indicate selected fence and field lines
where generally visible on aerial photographs
This information is unchecked



ROAD CLASSIFICATION
Primary highway, hard surface
Secondary highway, hard surface
Light-duty road, hard or improved surface
Unimproved road
Interstate Route
U. S. Route
State Route

USGS
Historical File
Topographic Division
WAGON BUTTE, IDAHO
N4307.5-W11345/7.5

SEP 18 1979
1550