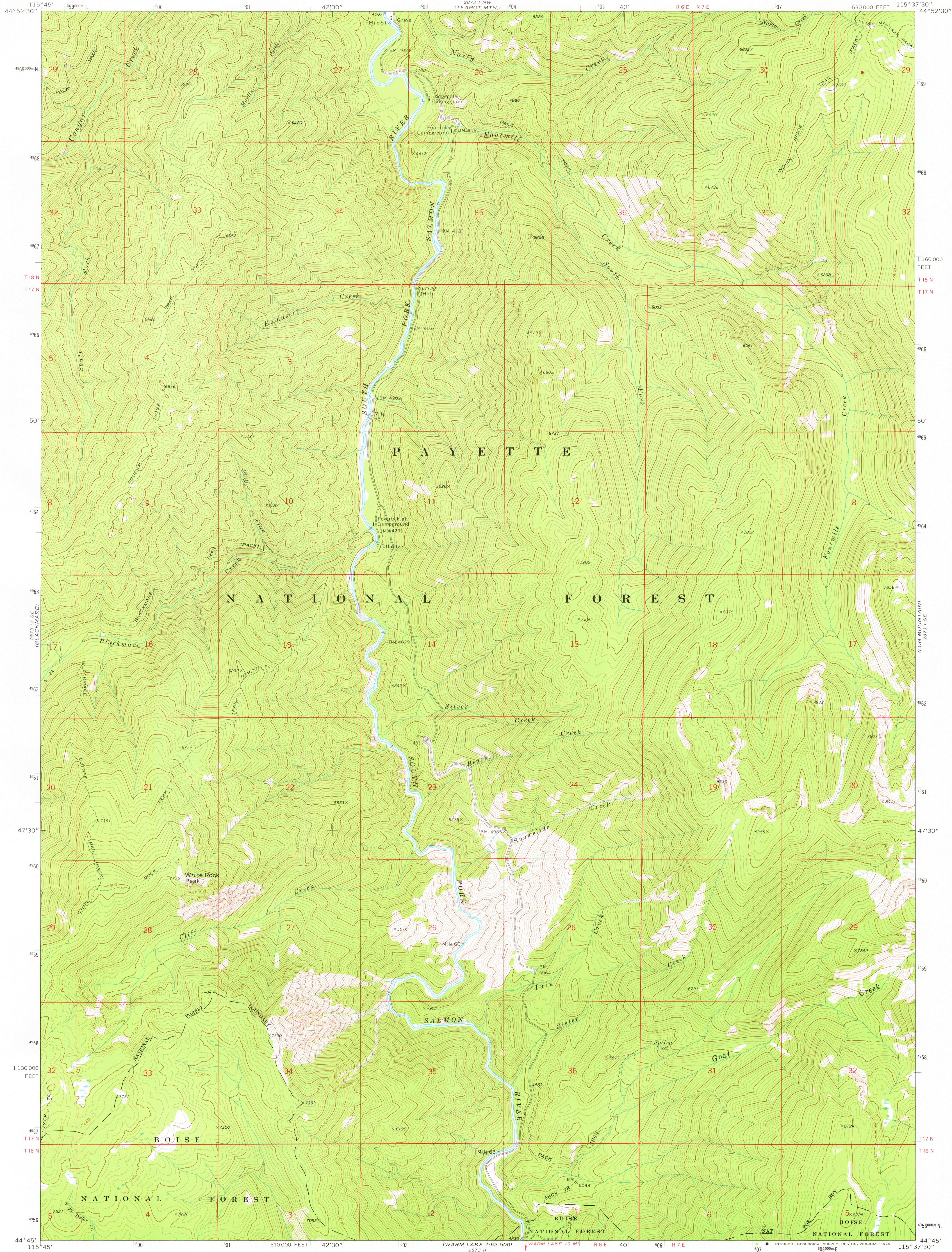
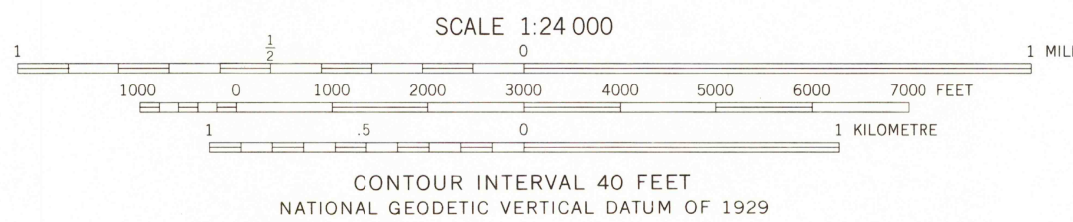
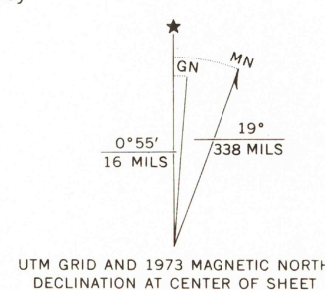


UNITED STATES
DEPARTMENT OF THE INTERIOR
GEOLOGICAL SURVEY

WHITE ROCK PEAK QUADRANGLE
IDAHO—VALLEY CO.
7.5 MINUTE SERIES (TOPOGRAPHIC)



Mapped, edited, and published by the Geological Survey
in cooperation with the U. S. Forest Service
Control by USGS, NOS/NOAA, and USFS
Topography by photogrammetric methods from aerial
photographs taken 1965 and 1972. Field checked 1973
Projection and 10,000-foot grid ticks: Idaho coordinate
system, west zone (transverse Mercator)
1000-metre Universal Transverse Mercator grid ticks,
zone 11, shown in blue. 1927 North American datum



ROAD CLASSIFICATION
Primary highway, hard surface
Secondary highway, hard surface
Light-duty road, hard or improved surface
Unimproved road
Interstate Route
U. S. Route
State Route

USGS
Historical File
Topographic Division

WHITE ROCK PEAK, IDAHO
N4445-W11537.5/7.5
1973

FEB 0 8 1977

AMS 2873 1 SW-SERIES V893

THIS MAP COMPLIES WITH NATIONAL MAP ACCURACY STANDARDS
FOR SALE BY U. S. GEOLOGICAL SURVEY, DENVER, COLORADO 80225, OR RESTON, VIRGINIA 22092
A FOLDER DESCRIBING TOPOGRAPHIC MAPS AND SYMBOLS IS AVAILABLE ON REQUEST

1200