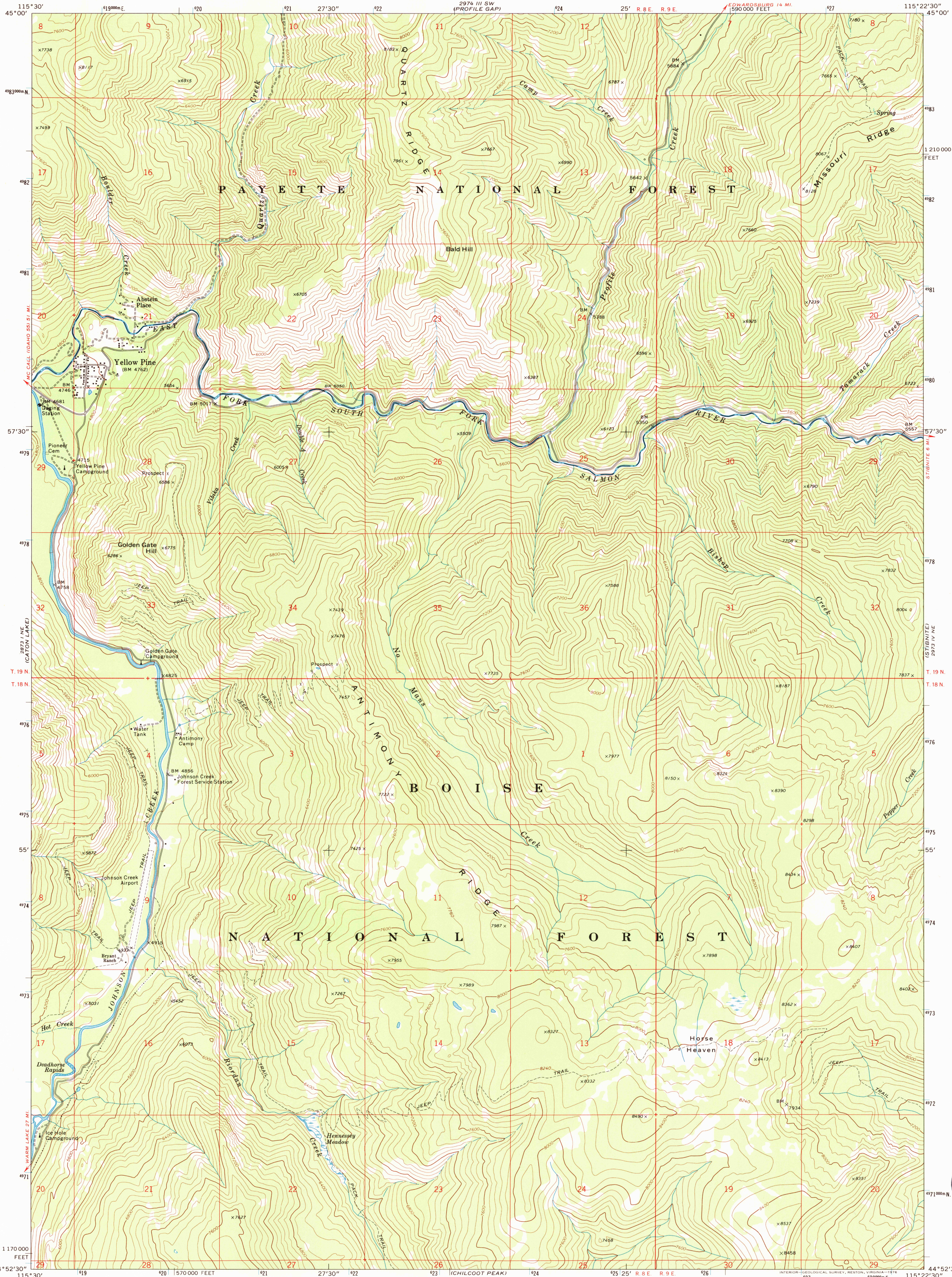
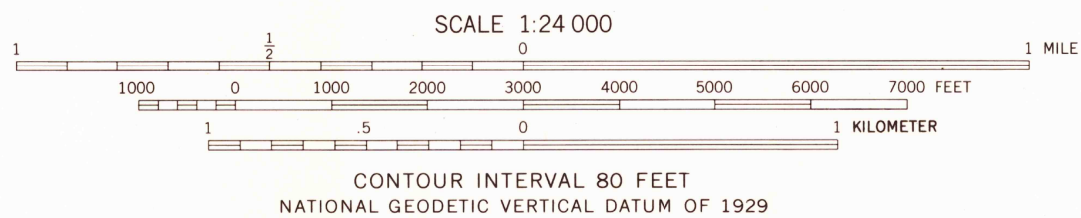
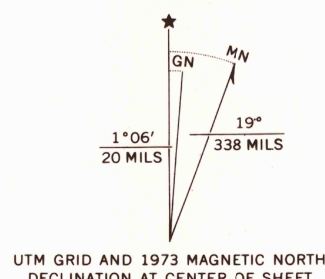


UNITED STATES
DEPARTMENT OF THE INTERIOR
GEOLOGICAL SURVEY

YELLOW PINE QUADRANGLE
IDAHO—VALLEY CO.
7.5 MINUTE SERIES (TOPOGRAPHIC)
NW/4 YELLOW PINE 15' QUADRANGLE



Maped by the U. S. Forest Service
Edited and published by the Geological Survey
Control by USGS, NOS/NOAA, and USFS
Topography by photogrammetric methods from aerial
photographs taken 1964 and 1972
Field checked by USGS 1973
Projection and 10,000-foot grid ticks: Idaho coordinate
system, west zone (transverse Mercator)
1000-meter Universal Transverse Mercator grid ticks,
zone 11, shown in blue. 1927 North American datum



ROAD CLASSIFICATION
Primary highway, hard surface —————
Secondary highway, hard surface —————
Unimproved road —————
Interstate Route ————
U. S. Route ————
State Route ————

YELLOW PINE, IDAHO
NW/4 YELLOW PINE 15' QUADRANGLE
N4452.5—W11522.5/7.5

1973

AMS 2973 IV NW—SERIES V893

