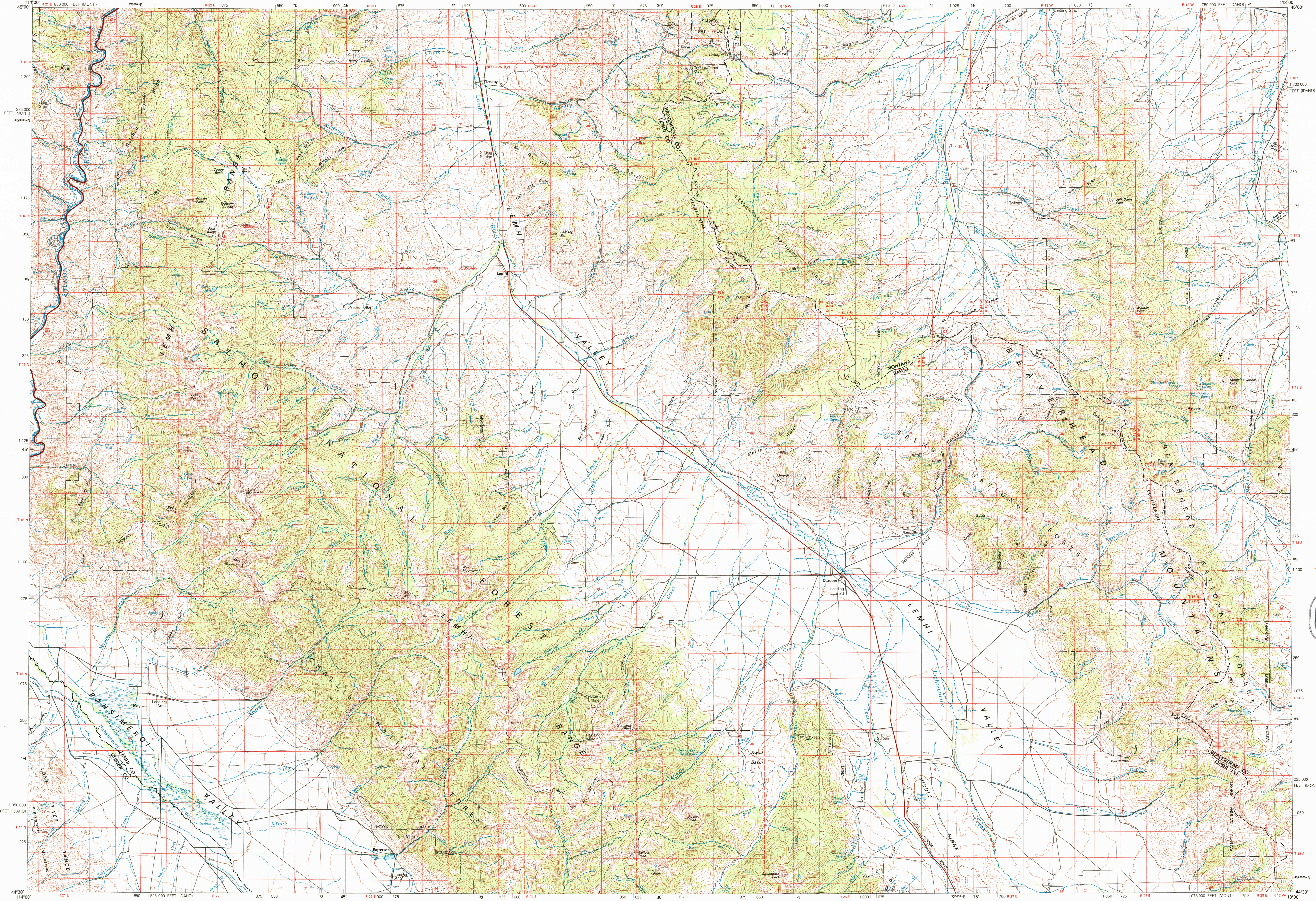


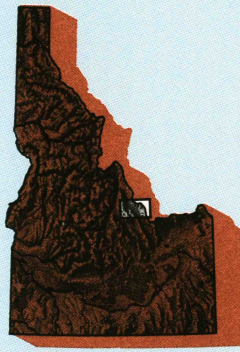
LEADORE, IDAHO-MONTANA

30X60 MINUTE SERIES (TOPOGRAPHIC)



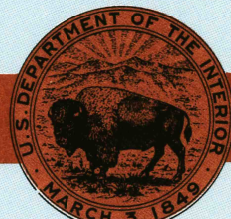
Leadore
IDAHO-MONTANA

1:100 000-scale metric
topographic map



30 X 60 MINUTE QUADRANGLE
SHOWING

- Contours and elevations in meters
- Highways, roads and other manmade structures
- Water features
- Woodland areas
- Geographic names



GEOLOGICAL SURVEY

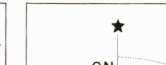
1980

Produced by the United States Geological Survey in cooperation with the Bureau of Land Management
Compiled from USGS 1:24 000 and 1:62 500-scale topographic maps dated 1956-1965. Planimetry revised from aerial photographs taken 1976 and other source data. Revised information not field checked. Map edited 1980
Projection and 10 000-meter grid, zone 12, Universal Transverse Mercator
25 000-foot grid ticks based on Idaho coordinate system, central zone, and Montana coordinate system, south zone 1927 North American Datum
To place on the predicted North American Datum 1983 move the projection lines 12 meters north and 70 meters east
There may be private inholdings within the boundaries of the National or State reservations shown on this map

CONTOUR INTERVAL 40 METERS
NATIONAL GEODETIC VERTICAL DATUM OF 1929

THIS MAP COMPLIES WITH NATIONAL MAP ACCURACY STANDARDS

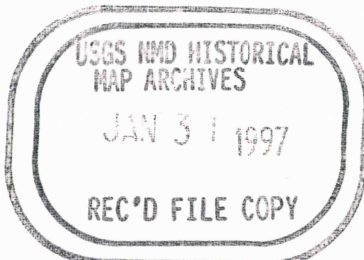
FOR SALE BY U.S. GEOLOGICAL SURVEY
DENVER, COLORADO 80225, OR RESTON, VIRGINIA 22092

CONVERSION TABLE		DECLINATION DIAGRAM		ADJOINING MAPS		
Meters	Feet			1	2	3
1	3.2808					
2	6.5617			1	2	3
3	9.8425			4	5	
4	13.1234					
5	16.4042			6	7	8
6	19.6850					
7	22.9659			1 Bighorn Crags		
8	26.2467			2 Salmon		
9	29.5275			3 Dillon		
10	32.8084			4 Challis		
To convert meters to feet multiply by 3.2808		UTM grid convergence (GN) and 1983 magnetic declination (MD) at center of map. Diagram is approximate		5 Lina		
To convert feet to meters multiply by 0.3048				6 White Cloud Peaks		
				7 Bonsh Peak		
				8 Dubois		

ISBN 0-607-85947-4



9 780607 859478



Topographic Map Symbols

Primary highway, hard surface	
Secondary highway, hard surface	
Light duty road, principal street, hard or improved surface	
Other road or street; trail	
Route marker: Interstate, U. S.; State	
Railroad: standard gage; narrow gage	
Bridge: overpass; underpass	
Tunnel: road; railroad	
Built up area; locality; elevation	
Airport; landing field; landing strip	
National boundary	
State boundary	
County boundary	
National or State reservation boundary	
Land grant boundary	
U. S. public lands survey: range, township; section	
Range, township; section line: protracted	
Power transmission line; pipeline	
Dam; dam with lock	
Cemetery; building	
Windmill; water well; spring	
Mine shaft; adit or cave; mine, quarry; gravel pit	
Campground; picnic area; U. S. location monument	
Ruins; cliff dwelling	
Distorted surface: strip mine, lava; sand	
Contours: index; intermediate; supplementary	
Bathymetric contours: index; intermediate	
Stream, lake; perennial; intermittent	
Rapids, large and small; falls, large and small	
Area to be submerged; marsh, swamp	
Land subject to controlled inundation; woodland	
Scrub; mangrove	
Orchard; vineyard	

A pamphlet describing topographic maps is available on request

SCALE 1:100 000
1 CENTIMETER ON THE MAP REPRESENTS 1 KILOMETER ON THE GROUND
CONTOUR INTERVAL 40 METERS

LEADORE, IDAHO-MONTANA
44113-E1-TM-100
1980