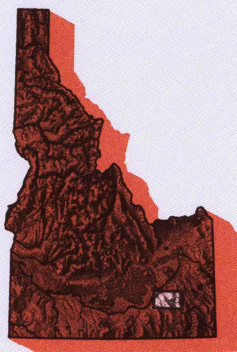


POCATELLO, IDAHO

30X60 MINUTE SERIES (TOPOGRAPHIC)

Pocatello
IDAHO

1:100 000-scale metric
topographic map



30 X 60 MINUTE QUADRANGLE
SHOWING

- Contours and elevations in meters
- Highways, roads and other manmade structures
- Water features
- Woodland areas
- Geographic names



GEOLOGICAL SURVEY

1984

Produced by the United States Geological Survey

Compiled from USGS 1:24 000-scale topographic maps dated 1968-1971. Planimetry revised from aerial photographs taken 1980 and other source data. Revised information not field checked. Map edited 1984.

Projection and 10 000-meter grid, zone 12, Universal Transverse Mercator
25 000-foot grid ticks based on Idaho coordinate system, east zone, 1927 North American Datum
To place on the predicted North American Datum 1983 move the projection lines 12 meters north and 67 meters east
There may be private inholdings within the boundaries of the National or State reservations shown on this map

CONTOUR INTERVAL 50 METERS
NATIONAL GEODETIC VERTICAL DATUM OF 1929

THIS MAP COMPLIES WITH NATIONAL MAP ACCURACY STANDARDS

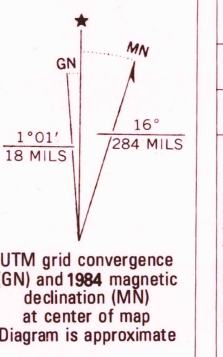
FOR SALE BY U.S. GEOLOGICAL SURVEY,
P.O. BOX 25286, DENVER, COLORADO, 80225

CONVERSION TABLE

Meters	Feet
1	3.2808
2	6.5617
3	9.8425
4	13.1234
5	16.4042
6	19.6850
7	22.9659
8	26.2467
9	29.5276
10	32.8084

To convert meters to feet multiply by 3.2808
To convert feet to meters multiply by 0.3048

DECLINATION DIAGRAM



UTM grid convergence (GN and 1984 magnetic declination) 1/10
Diagram is approximate

ADJOINING MAPS

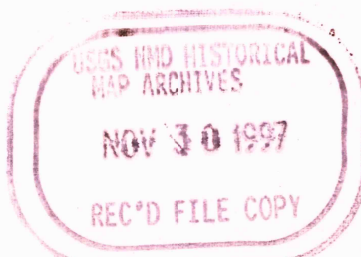
1	2	3
4	5	6
7	8	

- 1 Craters of the Moon
- 2 Blackfoot
- 3 Falls Lake
- 4 Lake Walcott
- 5 Soda Springs
- 6 Oakley
- 7 Meland City
- 8 Preston

ISBN 0-607-18127-3



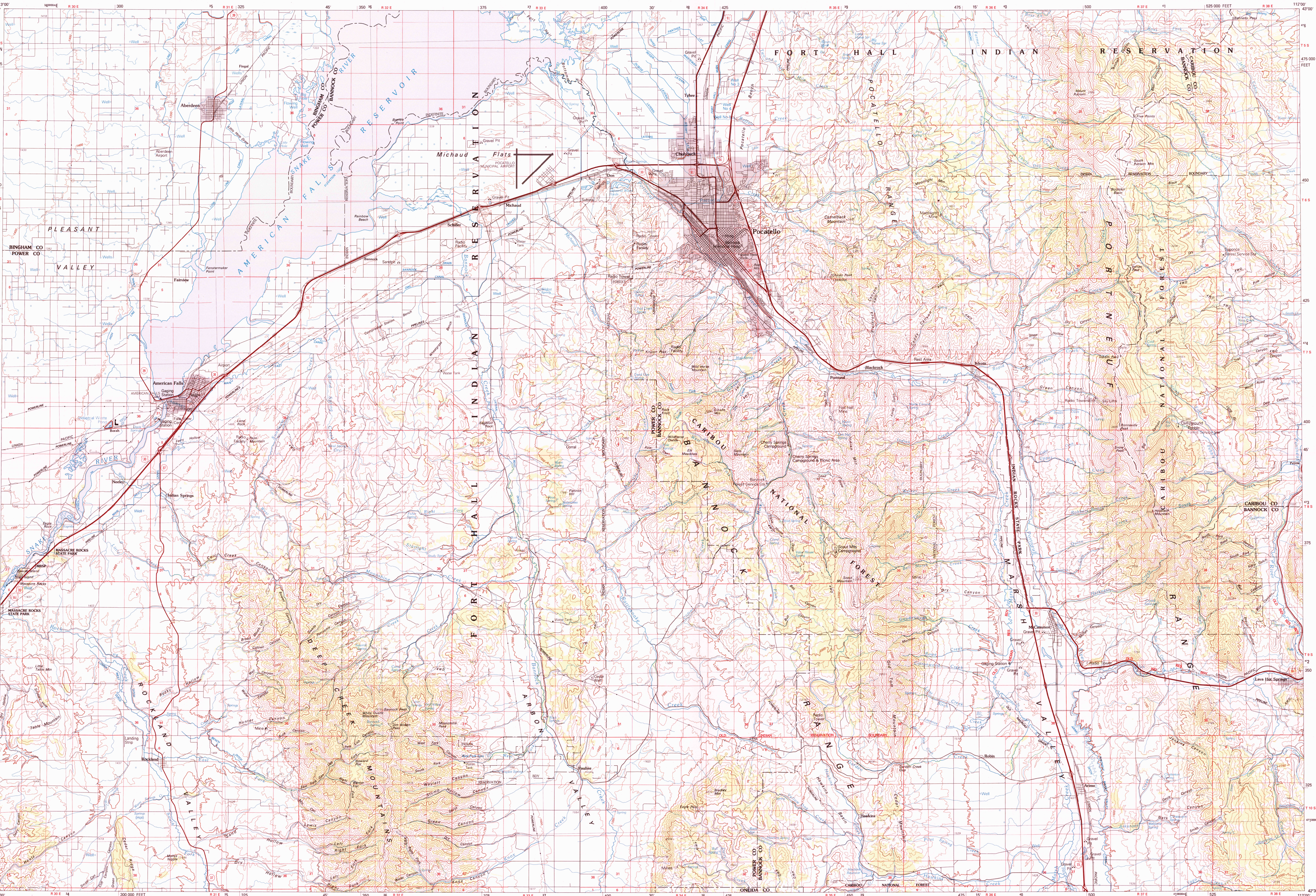
9 780607 181272



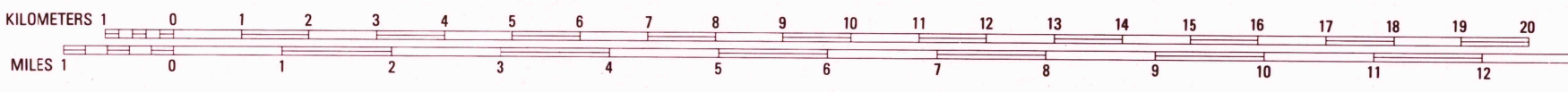
Topographic Map Symbols

- Primary highway, hard surface
- Secondary highway, hard surface
- Light-duty road, principal street, hard or improved surface
- Other road or street; trail
- Route marker: Interstate; U. S. State
- Railroad: standard gage; narrow gage
- Bridge: overpass; underpass
- Tunnel: road; railroad
- Built-up area, locality, elevation
- Airport: landing field; landing strip
- National boundary
- State boundary
- County boundary
- National or State reservation boundary
- Land grant boundary
- U. S. public lands survey: range, township; section
- Range, township; section line: protracted
- Power transmission line; pipeline
- Dam; dam with lock
- Cemetery; building
- Windmill; water well; spring
- Mine shaft; adit or cave; mine, quarry; gravel pit
- Campground; picnic area; U. S. location monument
- Ruins; cliff dwelling
- Distorted surface: strip mine, lava; sand
- Contours: index; intermediate; supplementary
- Bathymetric contours: index; intermediate
- Stream, lake: perennial; intermittent
- Rapids, large and small; falls, large and small
- Area to be submerged; marsh, swamp
- Land subject to controlled inundation; woodland
- Scrub; mangrove
- Orchard; vineyard

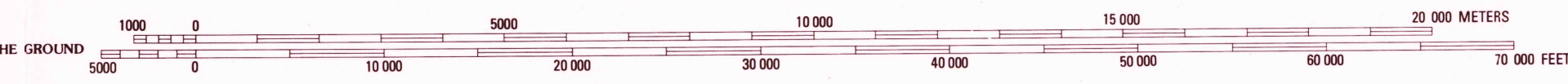
A pamphlet describing topographic maps is available on request



INTERIOR—GEOLOGICAL SURVEY, RESTON, VIRGINIA—1984



SCALE 1:100 000
ON THE MAP REPRESENTS 1 KILOMETER ON THE GROUND
CONTOUR INTERVAL 50 METERS



POCATELLO, IDAHO
42112-E1-TM-100

1984