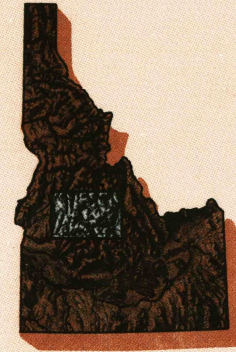


Challis

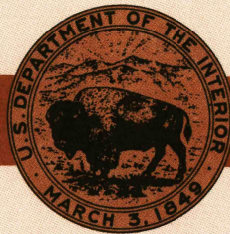
IDAHO

1:250 000-scale metric
topographic map



1 X 2 DEGREE QUADRANGLE
SHOWING

- Contours and elevations in meters
- Highways, roads and other manmade structures
- Water features
- Woodland areas
- Geographic names



GEOLOGICAL SURVEY

1989

Produced by the United States Geological Survey
Compiled from USGS 1:100 000-scale topographic maps dated 1982
Map edited 1989. Supersedes map dated 1957
Projection and 10,000-meter grid, zone 11
Universal Transverse Mercator
100 000-foot grid ticks based on Idaho coordinate system,
central and west zones
1927 North American Datum
To place on the predicted North American Datum 1983,
move the projection lines 14 meters north and 73 meters east
There may be private inholdings within the boundaries of the
National or State reservations shown on this map

1988 MAGNETIC DECLINATION FROM TRUE NORTH VARIES
FROM 17° 00' MILS EASTERNLY FOR THE CENTER OF THE
WEST EDGE TO 16° 14' (293 MILS) EASTERNLY FOR THE CENTER
OF THE EAST EDGE. MEAN ANNUAL CHANGE IS 5.3" WESTERLY

CONTOUR INTERVAL 100 METERS
NATIONAL GEODETIC VERTICAL DATUM OF 1929
ELEVATIONS SHOWN TO THE NEAREST METER

THIS MAP COMPLIES WITH NATIONAL MAP ACCURACY STANDARDS

CONVERSION TABLE				ADJOINING MAPS		
Meters	Feet	Feet	Meters	1	2	3
1	3.2808	1	3.048			
2	6.5617	2	6.096			
3	9.8425	3	9.144			
4	13.1234	4	12.192			
5	16.4042	5	15.240			
6	19.6850	6	18.288			
7	22.9659	7	21.336			
8	26.2467	8	24.384			
9	29.5276	9	27.432			
10	32.8084	10	30.480			
To convert meters to feet multiply by 3.2808						
To convert feet to meters multiply by 0.3048						
				4		5
				6	7	8
				1 Grangeville 2 Elk City 3 Dillon 4 Baker 5 Dubois 6 Boise 7 Hailey 8 Idaho Falls		

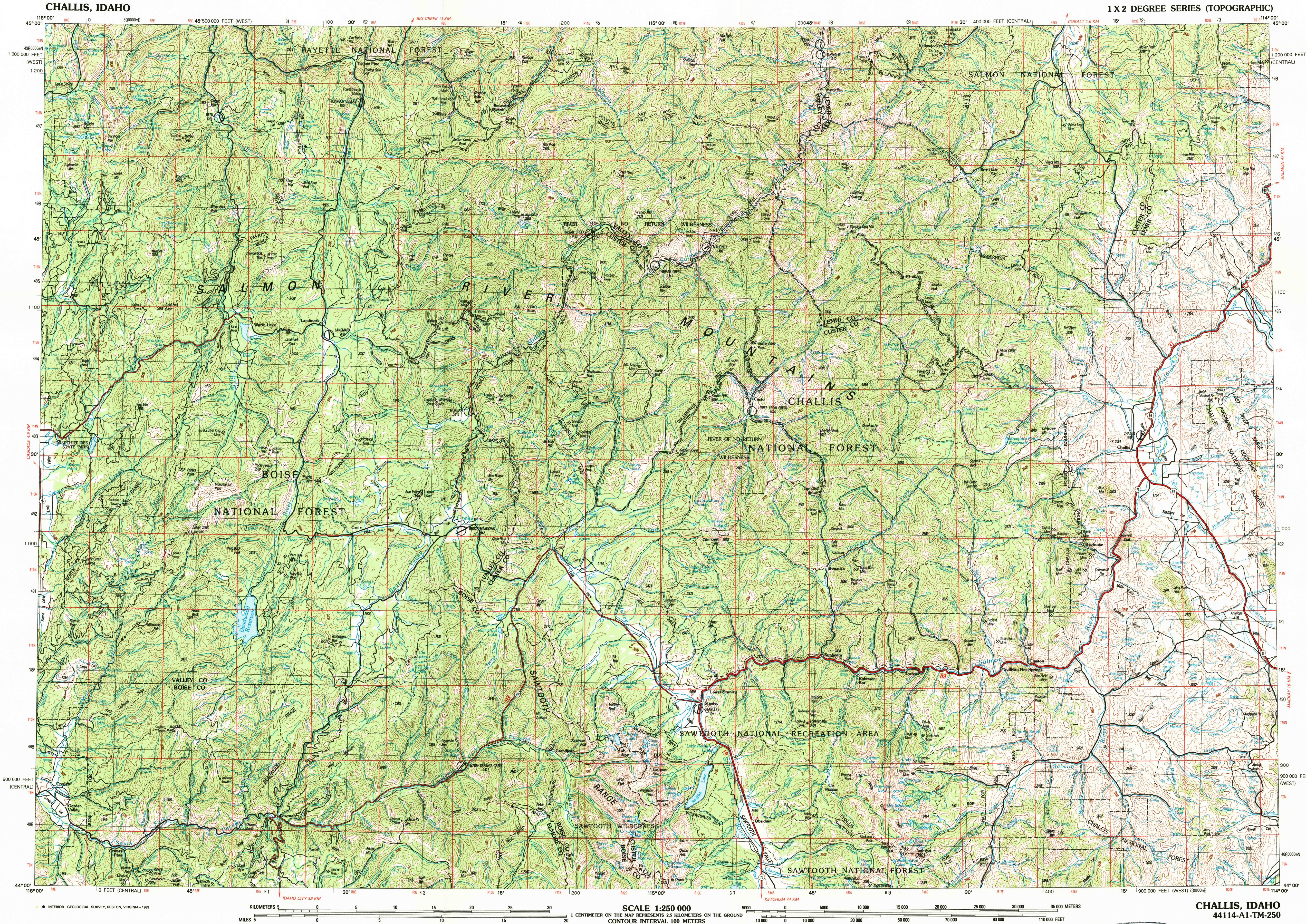
FOR SALE BY U.S. GEOLOGICAL SURVEY
DENVER, COLORADO 80225, OR RESTON, VIRGINIA 22092

Topographic Map Symbols

Figures in red denote approximate distances in kilometers between markers

Dual highway, interchange	
Primary highway, hard surface	
Secondary highway, hard surface	
Light duty road, hard or improved surface	
Other road, trail	
Route marker: Interstate, U.S., State	
Bridge: overpass; underpass	
Tunnel: road, railroad	
Railroad: standard gauge; single, multiple track	
Railroad: narrow gauge; single, multiple track	
Build-up area; locality, elevation	
Airport: runway pattern known; unknown	
National boundary	
State boundary	
County boundary	
National or State reservation boundary	
Land grant boundary	
U.S. public lands survey: range, township (surveyed)	
U.S. public lands survey: range, township (protracted)	
Powerline; pipeline: aboveground, underground	
Dam; landmark feature: landmark, building	
Well: water, other, spring; tank	
Cave; mine, quarry; oil platform	
Landmark area; landmark racetrack	
Disturbed surface: strip mine, lava; sand	
Contours: index; intermediate; supplementary	
Bathymetric contours: index; primary	
Bathymetric contours: intermediate; supplementary	
Stream, lake, perennial; intermittent	
Rapids, large and small; falls, large and small	
Land subject to controlled foundation: marsh, swamp	
Woodland; orchard, vineyard	
Mangrove	

A pamphlet describing topographic maps is available on request



CHALLIS, IDAHO
44114-A1-TM-250
1989

