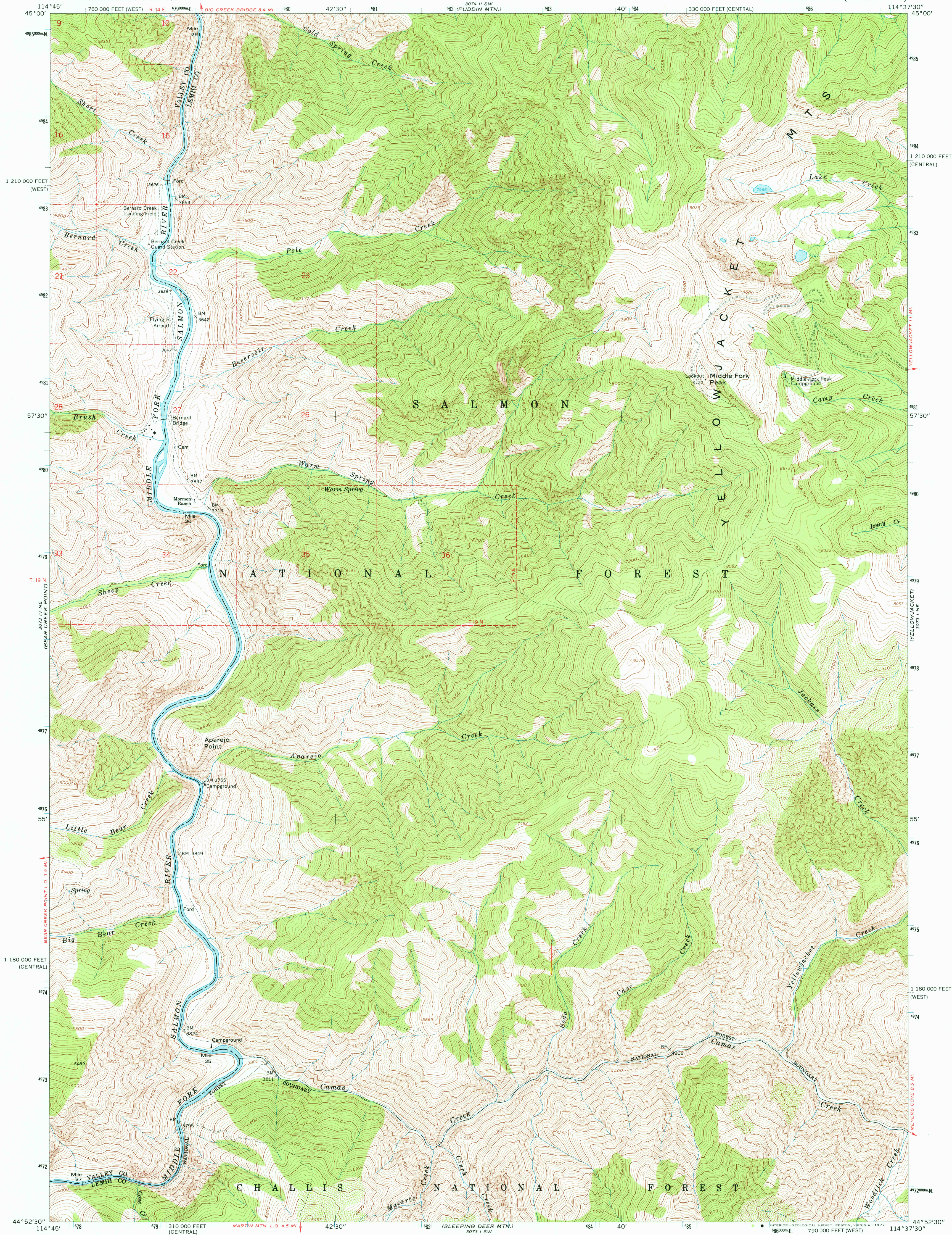
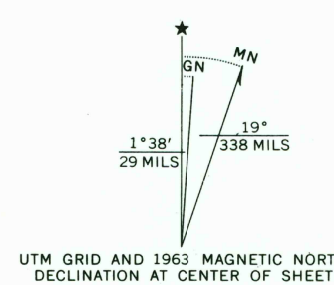


UNITED STATES
DEPARTMENT OF THE INTERIOR
GEOLOGICAL SURVEY

APAREJO POINT QUADRANGLE
IDAHO
7.5 MINUTE SERIES (TOPOGRAPHIC)



Mapped, edited, and published by the Geological Survey
Control by USGS and USC&GS
Topography by photogrammetric methods from aerial
photographs taken 1957. Field checked 1963
Polyconic projection. 1927 North American datum
10,000-foot grids based on Idaho coordinate system,
central and west zones
1000-meter Universal Transverse Mercator grid ticks,
zone 11, shown in blue
Where omitted, land lines have not been established
National Forest shown by proclamation boundary
Private ownership not shown within National Forest



CONTOUR INTERVAL 40 FEET
CONTOUR INTERVAL ON RIVER SURFACE 20 FEET
NATIONAL GEODETIC VERTICAL DATUM OF 1929



ROAD CLASSIFICATION
Unimproved dirt =-----

APAREJO POINT, IDAHO
N4452.5-W11437.5/7.5

USGS
Historical File
Topographic Division

1963
AMS 3073 I NW-SERIES V893

THIS MAP COMPLIES WITH NATIONAL MAP ACCURACY STANDARDS
FOR SALE BY U. S. GEOLOGICAL SURVEY, DENVER, COLORADO 80225, OR RESTON, VIRGINIA 22092
A FOLDER DESCRIBING TOPOGRAPHIC MAPS AND SYMBOLS IS AVAILABLE ON REQUEST

JAN 4 1977