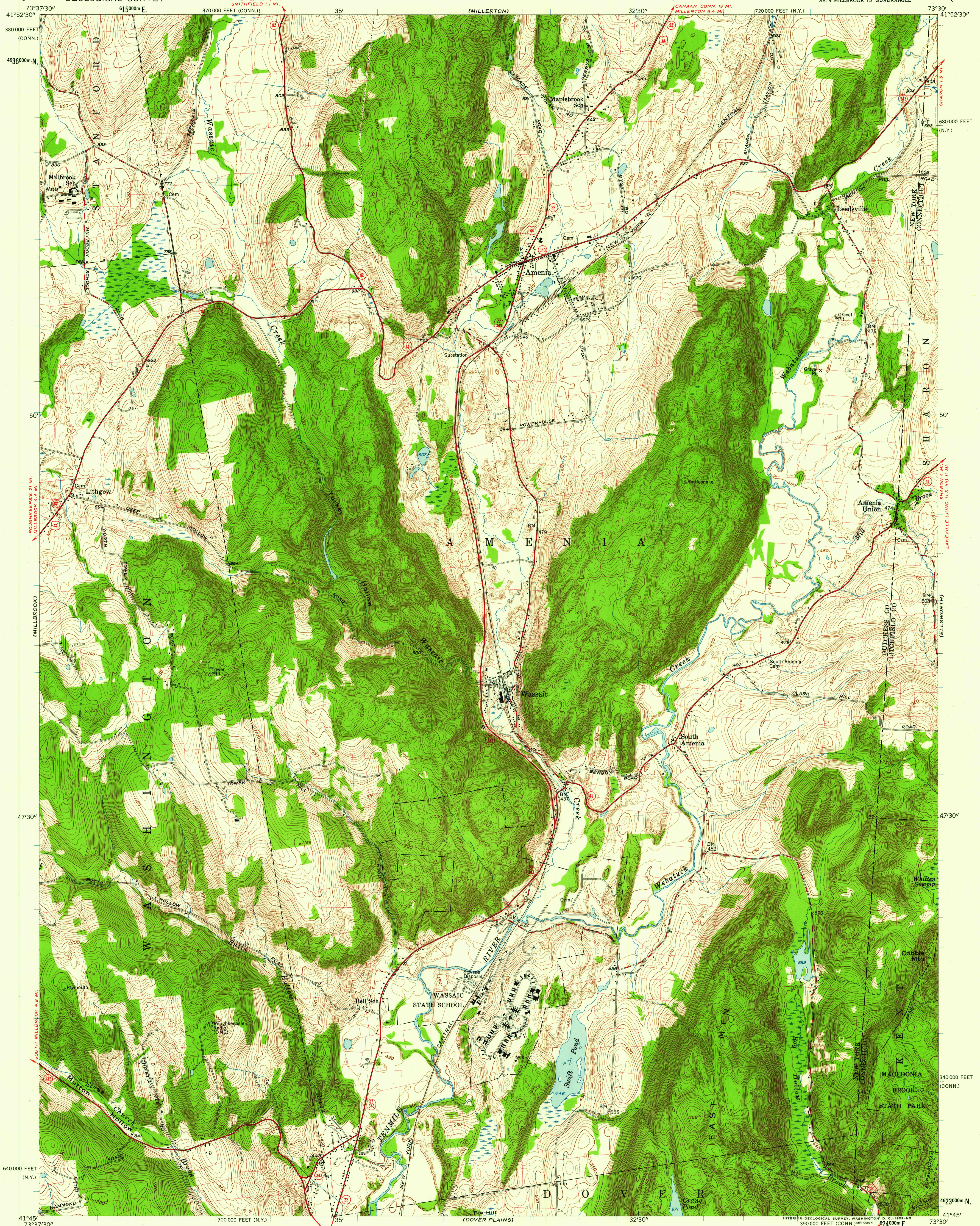


UNITED STATES
DEPARTMENT OF THE INTERIOR
GEOLOGICAL SURVEY

AMENIA QUADRANGLE
NEW YORK-CONNECTICUT
7.5 MINUTE SERIES (TOPOGRAPHIC)
SE 1/4 MILLBROOK 15' QUADRANGLE



Mapped, edited, and published by the Geological Survey
Control by USGS and USC&GS
Topography from aerial photographs by photogrammetric methods
Aerial photographs taken 1956. Field check 1958
Polyconic projection. 1927 North American datum
10,000-foot grids based on New York coordinate system,
east zone, and Connecticut coordinate system
1000-meter Universal Transverse Mercator grid ticks,
zone 18, shown in blue
Fine red dashed lines indicate selected fence and field lines
visible on aerial photographs. This information is unchecked
Unchecked elevations are shown in brown

TRUE NORTH
MAGNETIC NORTH
APPROXIMATE MEAN
DECLINATION, 1958

SCALE 1:24,000
1000 0 1000 2000 3000 4000 5000 6000 7000 FEET
1 KILOMETER
CONTOUR INTERVAL 10 FEET
DATUM IS MEAN SEA LEVEL
THIS MAP COMPLIES WITH NATIONAL MAP ACCURACY STANDARDS
FOR SALE BY U. S. GEOLOGICAL SURVEY, WASHINGTON 25, D. C.
A FOLDER DESCRIBING TOPOGRAPHIC MAPS AND SYMBOLS IS AVAILABLE ON REQUEST

USGS
Historical File
Topographic Division



ROAD CLASSIFICATION
Heavy-duty ——— Light-duty ———
Medium-duty ——— Unimproved dirt ———
U. S. Route ——— State Route ———

U.S.G.S.
FILE COPY
TOPOGRAPHIC DIVISION

AMENIA, N. Y.-CONN.
SE 1/4 MILLBROOK 15' QUADRANGLE
N4145-W7330/7.5
1958

SEP 25 1959
SEP 25 1959
3590