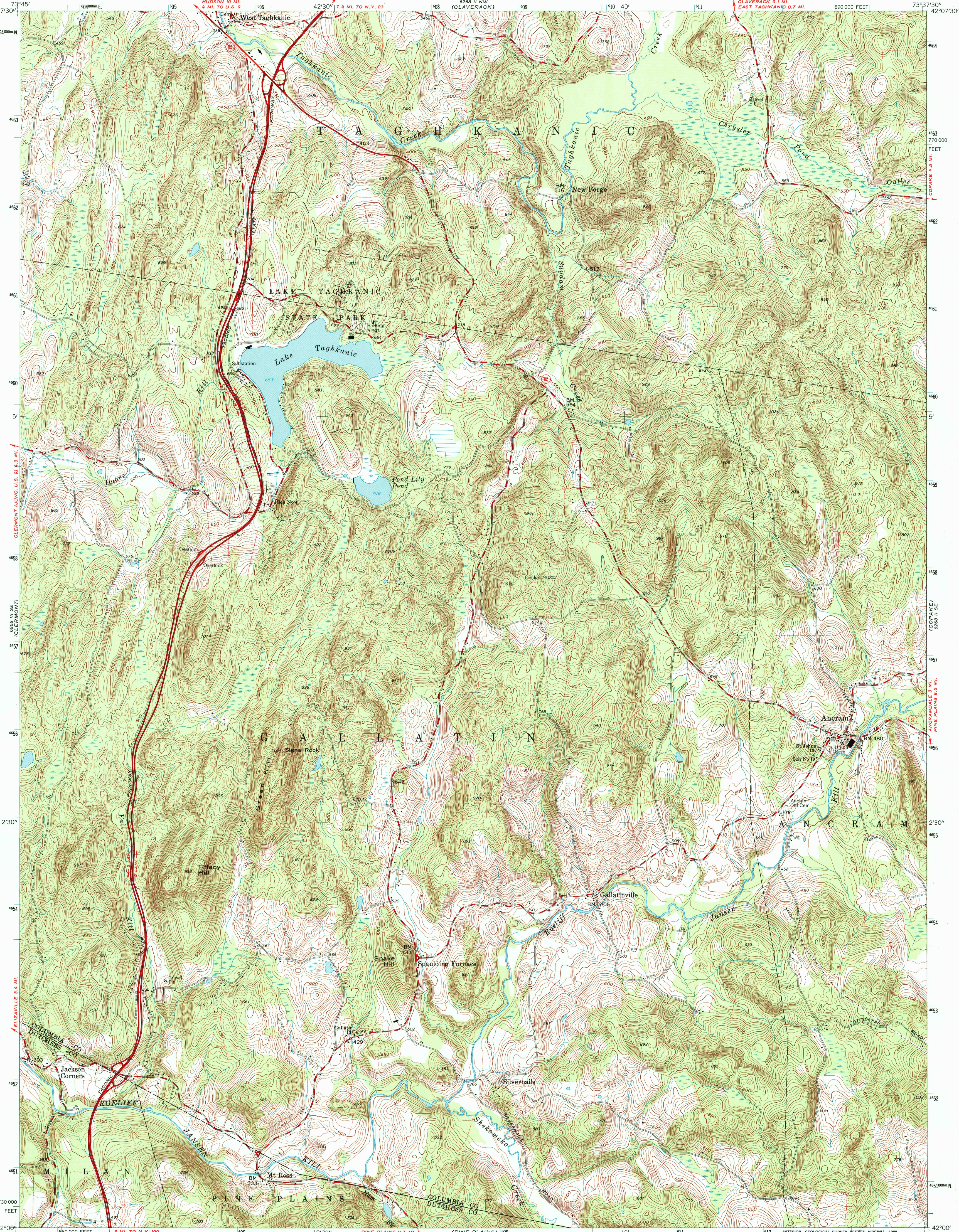
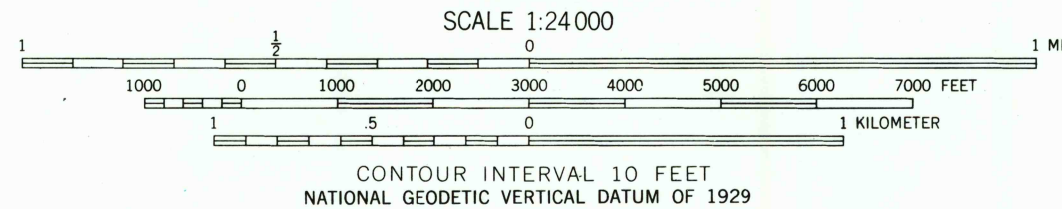
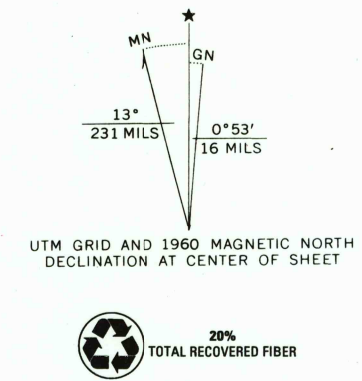


UNITED STATES  
DEPARTMENT OF THE INTERIOR  
GEOLOGICAL SURVEY

ANCRAM QUADRANGLE  
NEW YORK  
7.5 MINUTE SERIES (TOPOGRAPHIC)  
SW 1/4 COPAKE 15' QUADRANGLE



Mapped, edited, and published by the Geological Survey  
Control by USGS and USC&GS  
Culture and drainage in part compiled from aerial photographs taken 1942. Topography by planetable surveys 1945. Revised 1960  
Polyconic projection. 1927 North American datum  
10,000-foot grid based on New York coordinate system, east zone  
1000-meter Universal Transverse Mercator grid ticks, zone 18, shown in blue  
Fine red dashed lines indicate selected fence and field lines where generally visible on aerial photographs. This information is unchecked  
To place on the predicted North American Datum 1983, move the projection lines 6 meters south and 36 meters west as shown by dashed corner ticks  
Map photorevised 1978  
No major culture or drainage changes observed



THIS MAP COMPLIES WITH NATIONAL MAP ACCURACY STANDARDS  
FOR SALE BY U.S. GEOLOGICAL SURVEY  
DENVER, COLORADO 80225, OR RESTON, VIRGINIA 22092  
A FOLDER DESCRIBING TOPOGRAPHIC MAPS AND SYMBOLS IS AVAILABLE ON REQUEST



ROAD CLASSIFICATION  
Heavy-duty ——— Light-duty ———  
Medium-duty ——— Unimproved dirt ———  
State Route ○

RECEIVED  
SEP 30 2000  
USGS NWID  
HISTORICAL MAP ARCHIVES

ANCRAM, N. Y.  
SW 1/4 COPAKE 15' QUADRANGLE  
42073-A6-TF-024  
PHOTOINSPECTED 1978  
1960  
DMA 6268 II SW-SERIES V821

