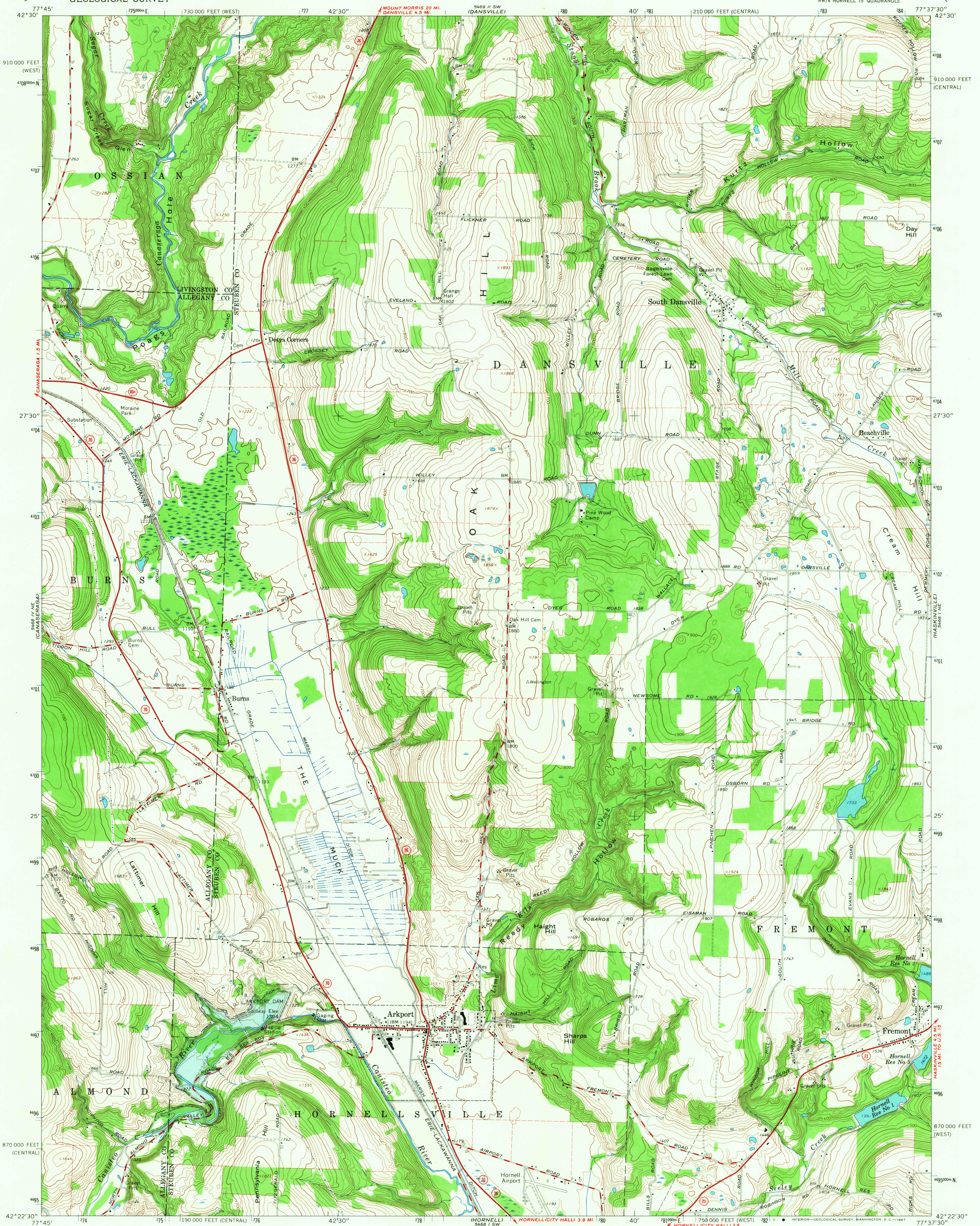


UNITED STATES  
DEPARTMENT OF THE INTERIOR  
GEOLOGICAL SURVEY

ARKPORT QUADRANGLE  
NEW YORK  
7.5 MINUTE SERIES (TOPOGRAPHIC)  
NW/4 HORNELL 15' QUADRANGLE



Mapped, edited, and published by the Geological Survey

Control by USGS and USC&GS

Topography by photogrammetric methods from aerial photographs taken 1963. Field checked 1965

Polyconic projection. 1927 North American datum

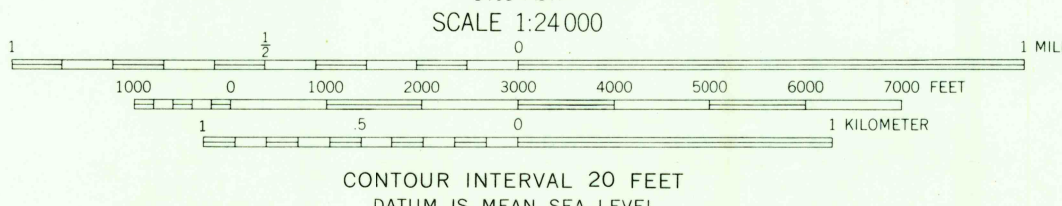
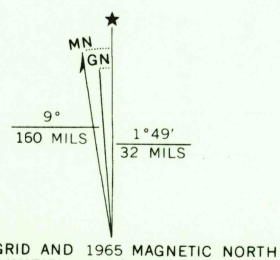
10,000-foot grids based on New York coordinate system, central and west zones

1000-meter Universal Transverse Mercator grid ticks, zone 18, shown in blue

Fine red dashed lines indicate selected fence and field lines where generally visible on aerial photographs. This information is unchecked

Area covered by dashed light-blue pattern is subject to controlled inundation

U. S. Reservation boundary from maps by U. S. Corps of Engineers



USGS  
Historical File  
Topographic Division



ROAD CLASSIFICATION  
Heavy-duty ——— Light-duty ———  
Medium-duty ——— Unimproved dirt ———  
State Route ———

U.S.G.S.  
FILE COPY  
TOPOGRAPHIC DIVISION

JUN 5 1967

ARKPORT, N. Y.  
NW/4 HORNELL 15' QUADRANGLE  
N4222.5—W7737.5/7.5

1965

AMS 5468 1 NW—SERIES V821

THIS MAP COMPLIES WITH NATIONAL MAP ACCURACY STANDARDS  
FOR SALE BY U. S. GEOLOGICAL SURVEY, WASHINGTON, D. C. 20242  
A FOLDER DESCRIBING TOPOGRAPHIC MAPS AND SYMBOLS IS AVAILABLE ON REQUEST

3255