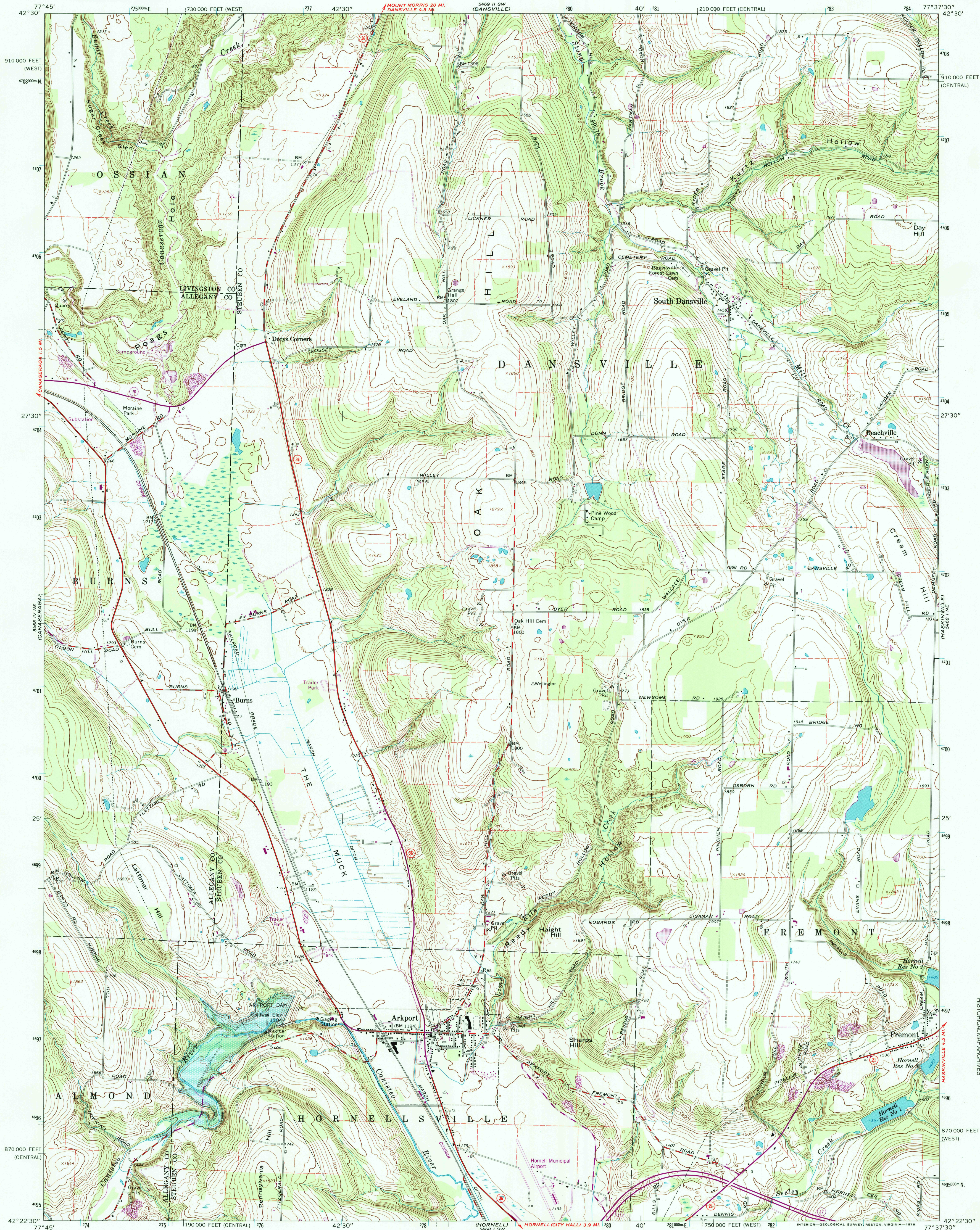


UNITED STATES  
DEPARTMENT OF THE INTERIOR  
GEOLOGICAL SURVEY

ARKPORT QUADRANGLE  
NEW YORK  
7.5 MINUTE SERIES (TOPOGRAPHIC)

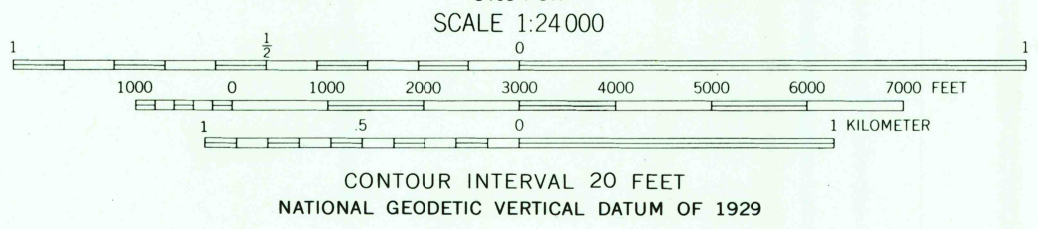
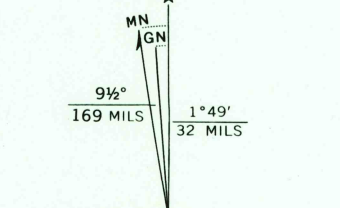


Mapped, edited, and published by the Geological Survey  
Control by USGS and USC&GS

Topography by photogrammetric methods from aerial photographs  
taken 1963. Field checked 1965

Polyconic projection. 1927 North American datum  
10,000-foot grids based on New York coordinate system,  
central and west zones  
1000-meter Universal Transverse Mercator grid ticks,  
zone 18, shown in blue

Fine red dashed lines indicate selected fence and field lines where  
generally visible on aerial photographs. This information is uncheck  
Area covered by dashed light-blue pattern is subject  
to controlled inundation



ROAD CLASSIFICATION  
Heavy-duty ——— Light-duty ———  
Medium-duty ——— Unimproved dirt ———  
State Route ———

ARKPORT, N. Y.

N4222.5—W7737.5/7.5

1965  
PHOTOREVISED 1978  
AMS 5468 1 NW—SERIES V821

THIS MAP COMPLIES WITH NATIONAL MAP ACCURACY STANDARDS  
FOR SALE BY U. S. GEOLOGICAL SURVEY, RESTON, VIRGINIA 22092  
A FOLDER DESCRIBING TOPOGRAPHIC MAPS AND SYMBOLS IS AVAILABLE ON REQUEST

Revisions shown in purple compiled from aerial photographs  
taken 1976 and other source data. This information not  
field checked. Map edited 1978

RECEIVED  
JUL 31 1999

USGS NMD  
HISTORICAL MAP ARCHIVES

