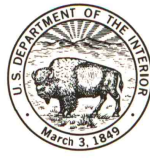


588 11 SE  
(LANSFORD)

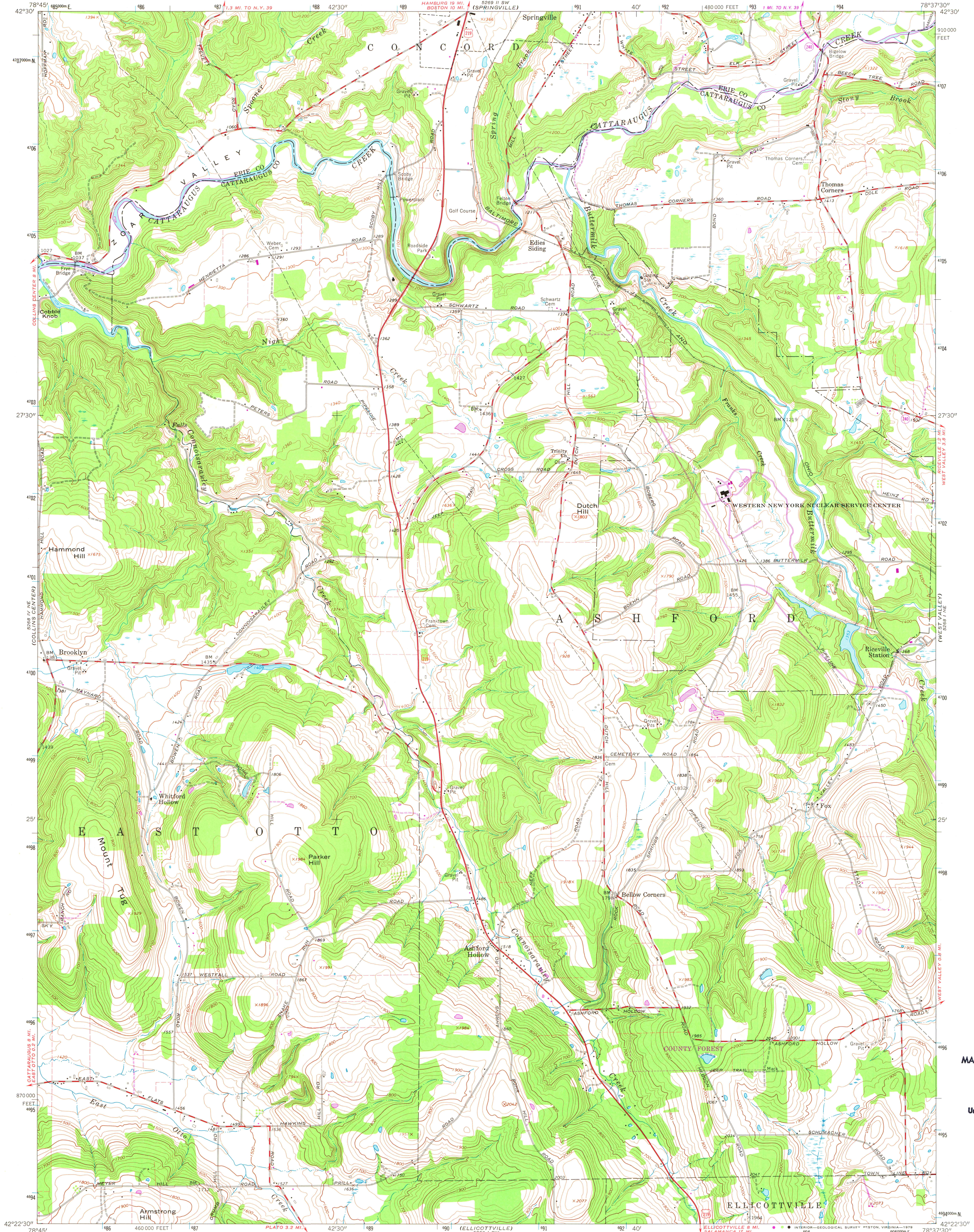
UNITED STATES  
DEPARTMENT OF THE INTERIOR  
GEOLOGICAL SURVEY



STATE OF NEW YORK  
DEPARTMENT OF PUBLIC WORKS

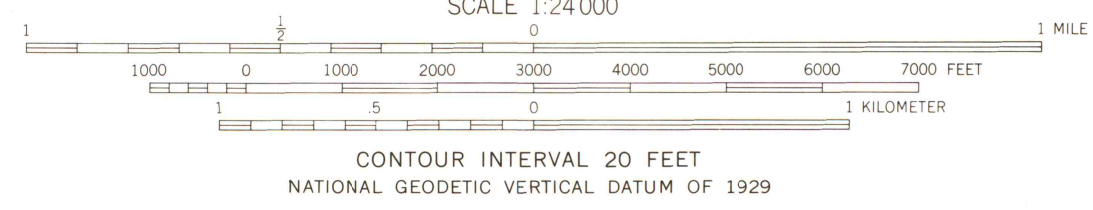
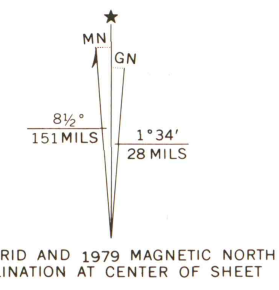
ASHFORD HOLLOW QUADRANGLE  
NEW YORK  
7.5 MINUTE SERIES (TOPOGRAPHIC)

588 11 SE  
(SARDINIA)



MAP AND AIR PHOTO  
LIBRARY  
MAY 9 1980  
University of Wisconsin  
Madison

Mapped, edited, and published by the Geological Survey  
Control by USGS and USC&GS  
Topography by photogrammetric methods from aerial photographs  
taken 1962. Field checked 1964  
Polyconic projection. 1927 North American datum  
10,000-foot grid based on New York coordinate system, west zone  
1000-meter Universal Transverse Mercator grid ticks,  
zone 17, shown in blue  
Fine red dashed lines indicate selected fence and field lines where  
generally visible on aerial photographs. This information is unchecked  
There may be private inholdings within the boundaries of  
the National or State reservations shown on this map  
Revisions shown in purple and woodland compiled from  
aerial photographs taken 1976 and other source data  
This information not field checked. Map edited 1979



ROAD CLASSIFICATION  
Primary highway, all weather, improved surface  
Secondary highway, all weather, fair or dry weather  
Interstate Route  
U.S. Route  
State Route

ASHFORD HOLLOW, N. Y.  
N4222.5—W7837.5/7.5

THIS MAP COMPLIES WITH NATIONAL MAP ACCURACY STANDARDS  
FOR SALE BY U.S. GEOLOGICAL SURVEY, RESTON VIRGINIA 22092  
A FOLDER DESCRIBING TOPOGRAPHIC MAPS AND SYMBOLS IS AVAILABLE ON REQUEST

1964  
PHOTOREVISED 1979  
AMS 5268 1 NW—SERIES V821