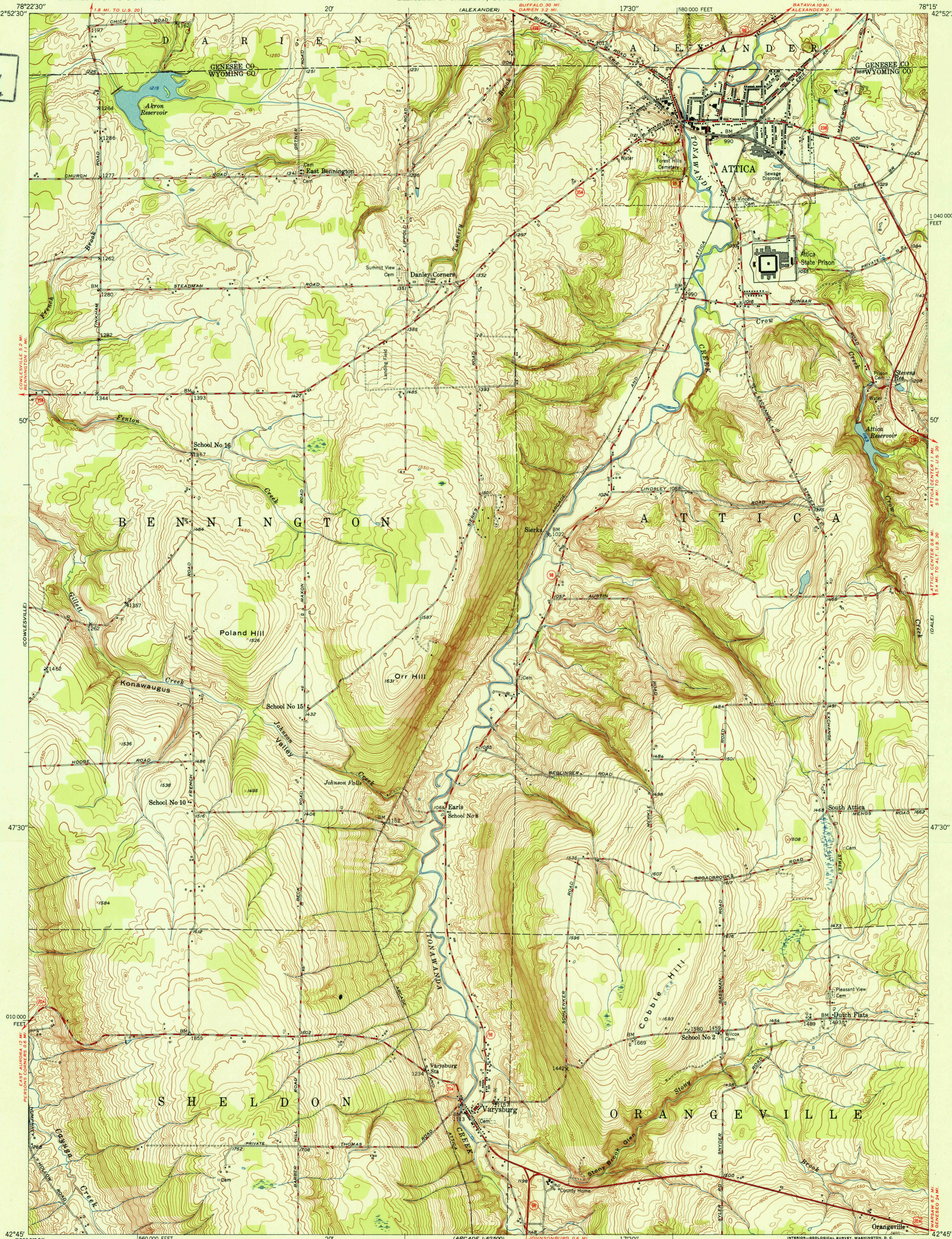
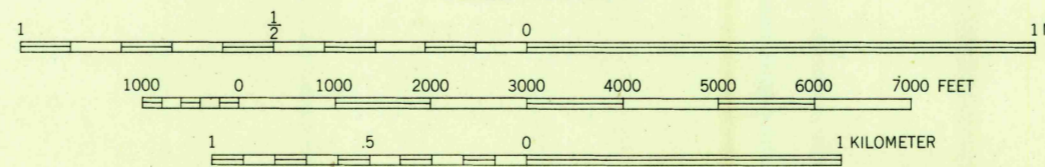


U. S. G. S.  
FILE COPY  
Inspection and Editing



Mapped, edited, and published by the Geological Survey  
Control by USGS and USC&GS  
Culture and drainage in part compiled by Corps of Engineers,  
Dept. of the Army, from aerial photographs taken 1942  
Topography by plane-table methods 1949  
Polyconic projection. 1927 North American datum  
10,000-foot grid based on New York coordinate system  
west zone

TRUE NORTH  
MAGNETIC NORTH  
APPROXIMATE MEAN  
DECLINATION, 1949



CONTOUR INTERVAL 10 FEET  
DATUM IS MEAN SEA LEVEL

THIS MAP COMPLIES WITH NATIONAL MAP ACCURACY STANDARDS  
FOR SALE BY U. S. GEOLOGICAL SURVEY, WASHINGTON 25, D. C.  
A FOLDER DESCRIBING TOPOGRAPHIC MAPS AND SYMBOLS IS AVAILABLE ON REQUEST

USGS  
Historical File  
Topographic Division

ROAD CLASSIFICATION  
HARD-SURFACE ALL WEATHER ROADS  
Heavy-duty ——— LANE IS LANE  
Medium-duty ——— LANE IS LANE  
Loose-surface, graded, or narrow hard-surface ———  
U. S. Route  
State Route  
DRY WEATHER ROADS  
Improved dirt ———  
Unimproved dirt ———  
U. S. Route  
State Route

U. S. G. S.  
FILE COPY  
Inspection and Editing

ATTICA, N. Y.  
SE/4 ATTICA 15' QUADRANGLE  
N4245-W7815/7.5

EDITION OF 1951