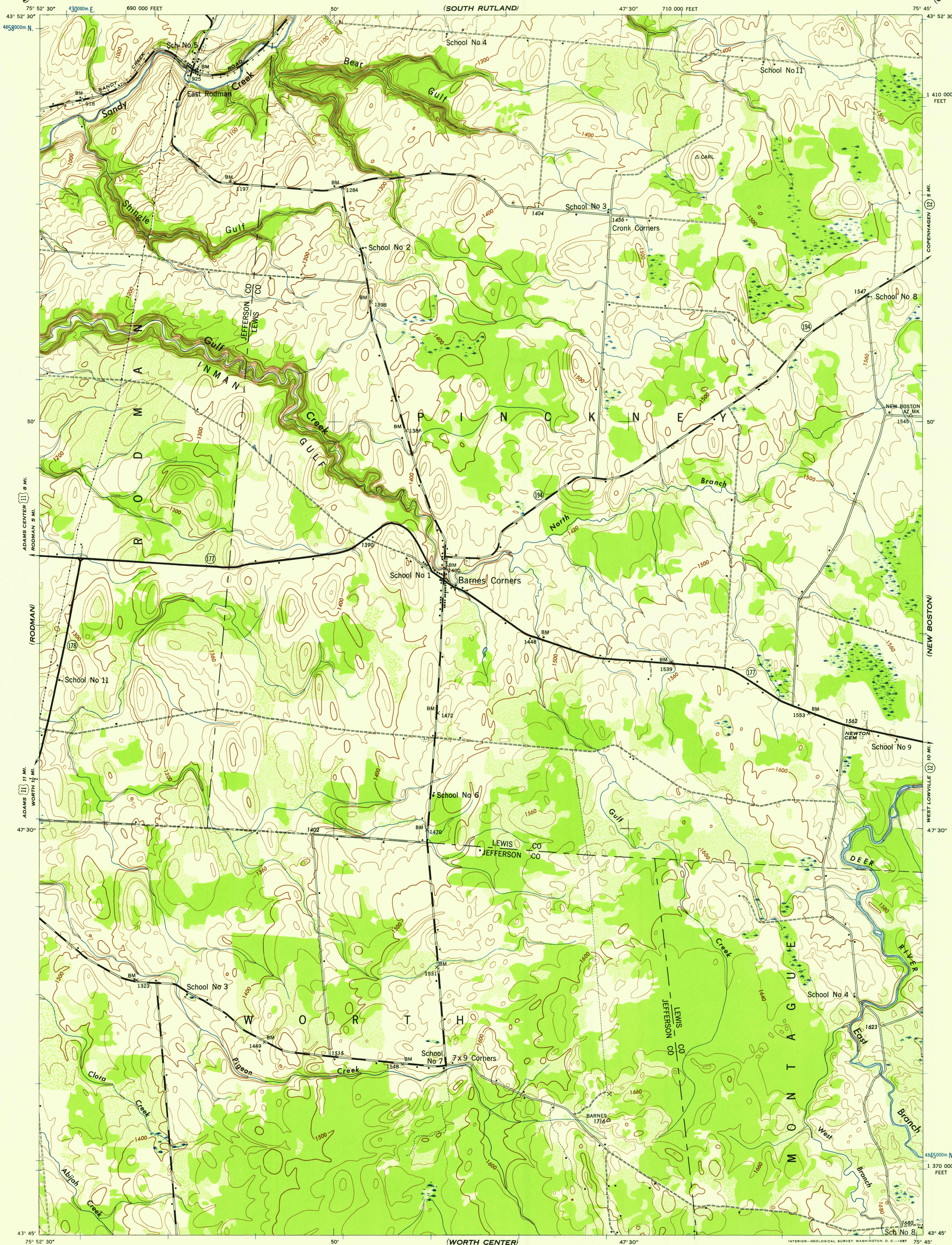


NEW YORK

WAR DEPARTMENT
CORPS OF ENGINEERS, U. S. ARMY

BARNES CORNERS QUADRANGLE

7½-MINUTE SERIES



U.S.G.S.
FILE COPY
TOPOGRAPHIC DIVISION

U.S.G.S.
FILE COPY
TOPOGRAPHIC DIVISION

Map by Tennessee Valley Authority under direction of the
Chief of Engineers, U. S. Army, 1943.
Control by USC&GS and TVA.
Topography by U. S. Geological Survey and Tennessee Valley Authority
by Stereophotogrammetric methods (Multiplex).
Field completion surveys by TVA.
Wide-angle photography for TVA, 1942.
Polyconic projection. 1927 North American datum.

ROAD CLASSIFICATION
Dependable hard-surface,
heavy-duty road. ——— U. S. Route 177
Secondary, hard-surface,
all-weather road. ——— State Route 179
Dirt road. ———
More than two lanes indicated by note along road with tick at point of change. 3 LANE 4 LANE

THIS MAP COMPLIES WITH THE NATIONAL STANDARD MAP ACCURACY REQUIREMENTS.

Scale 1:24,000
1 000 500 0 1000 2000 Yards
CONTOUR INTERVAL 20 FEET
DATUM IS MEAN SEA LEVEL

REPRINTED FROM MILITARY EDITION FOR CIVIL USE
TEN THOUSAND FOOT GRID BASED ON NEW YORK PLANE COORDINATE SYSTEM, CENTRAL ZONE
ONE THOUSAND METER UNIVERSAL TRANSVERSE MERCATOR GRID TICKS ZONE 18, SHOWN IN BLUE
FOR SALE BY U. S. GEOLOGICAL SURVEY, WASHINGTON 25, D. C.
A FOLDER DESCRIBING TOPOGRAPHIC MAPS AND SYMBOLS IS AVAILABLE ON REQUEST

USGS
Historical File
Topographic Division
APPROXIMATE MEAN
MAGNETIC NORTH
DECLINATION, 1942

BARNES CORNERS, N. Y.
N4345-W7545/7.5
EDITION OF 1943

APR 9 1957

1145