

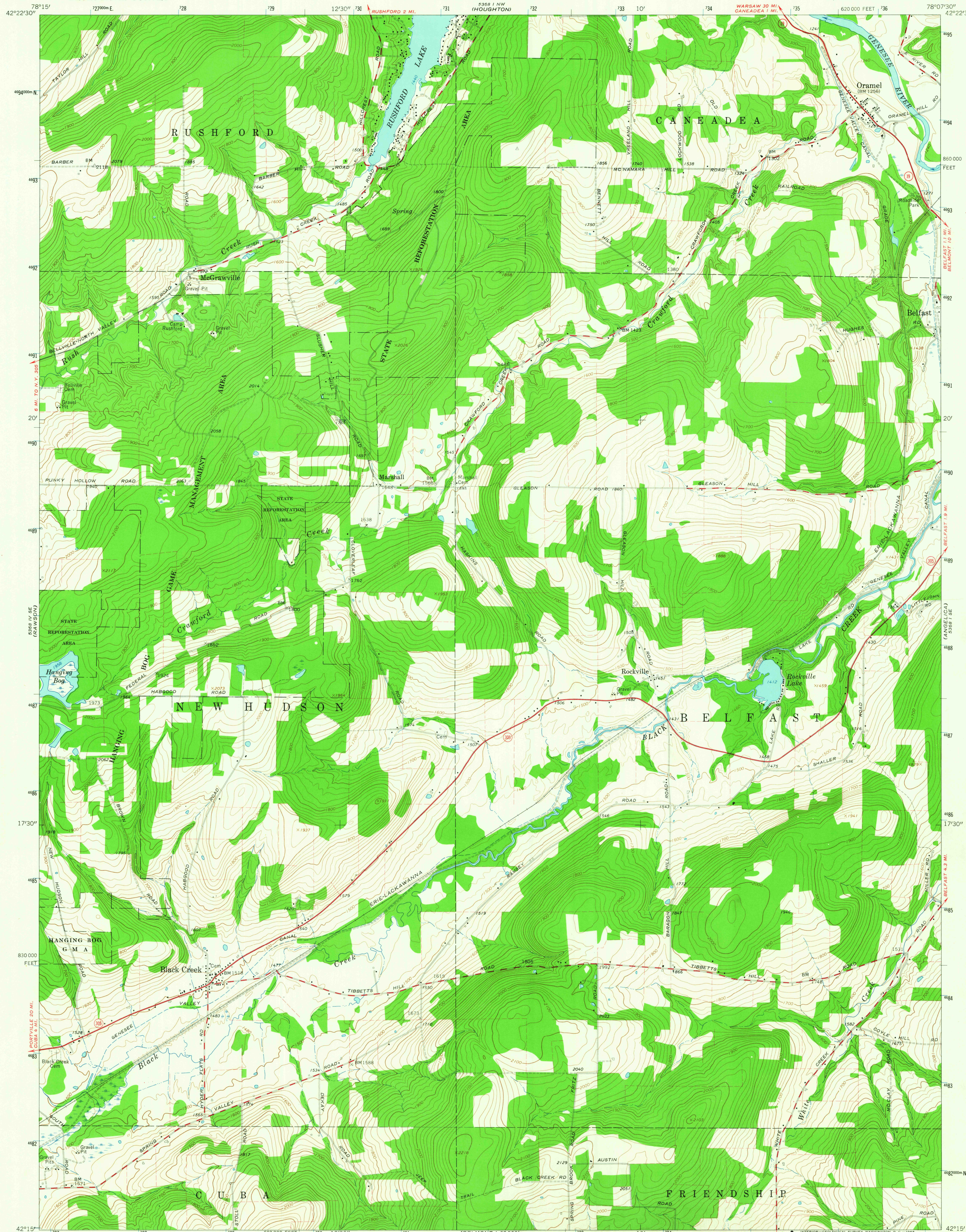
538 I NE  
(FREEDOM)

UNITED STATES  
DEPARTMENT OF THE INTERIOR  
GEOLOGICAL SURVEY

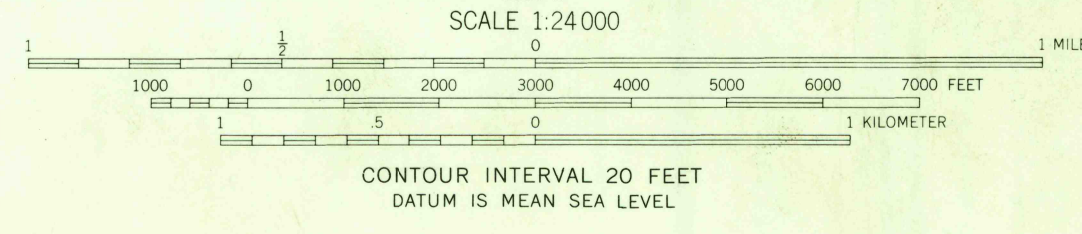
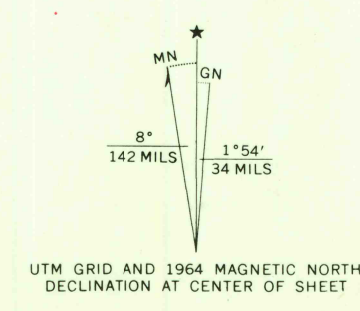
STATE OF NEW YORK  
DEPARTMENT OF PUBLIC WORKS

BLACK CREEK QUADRANGLE  
NEW YORK-ALLEGANY CO.  
7.5 MINUTE SERIES (TOPOGRAPHIC)  
SW/4 ANGELICA 15' QUADRANGLE

538 I NE  
(FILLMORE)



Maped, edited, and published by the Geological Survey  
Control by USGS and USC&GS  
Topography by photogrammetric methods from aerial photographs  
taken 1963. Field checked 1964  
Polyconic projection. 1927 North American datum  
10,000-foot grid based on New York coordinate system, west zone  
1000-meter Universal Transverse Mercator grid ticks,  
zone 17, shown in blue  
Fine red dashed lines indicate selected fence and field lines where  
generally visible on aerial photographs. This information is unchecked



ROAD CLASSIFICATION	
Heavy-duty	Light-duty
Medium-duty	Unimproved dirt
State Route	

BLACK CREEK, N. Y.  
SW/4 ANGELICA 15' QUADRANGLE  
N4215-W7807.5/7.5  
1964  
AMS 5368 I SW-SERIES V821

U.S.G.S.  
FILE COPY  
TOPOGRAPHIC DIVISION

NOV 2 1965