

NEW YORK

MASSENA, N. Y. HY. NO. 37 4 MI.

15° 14° 13° 12° 11° 10°

BRASHER FALLS

FIRST EDITION - AMS 2

SHEET 6073 IV SE
A.M.S. SERIES V821

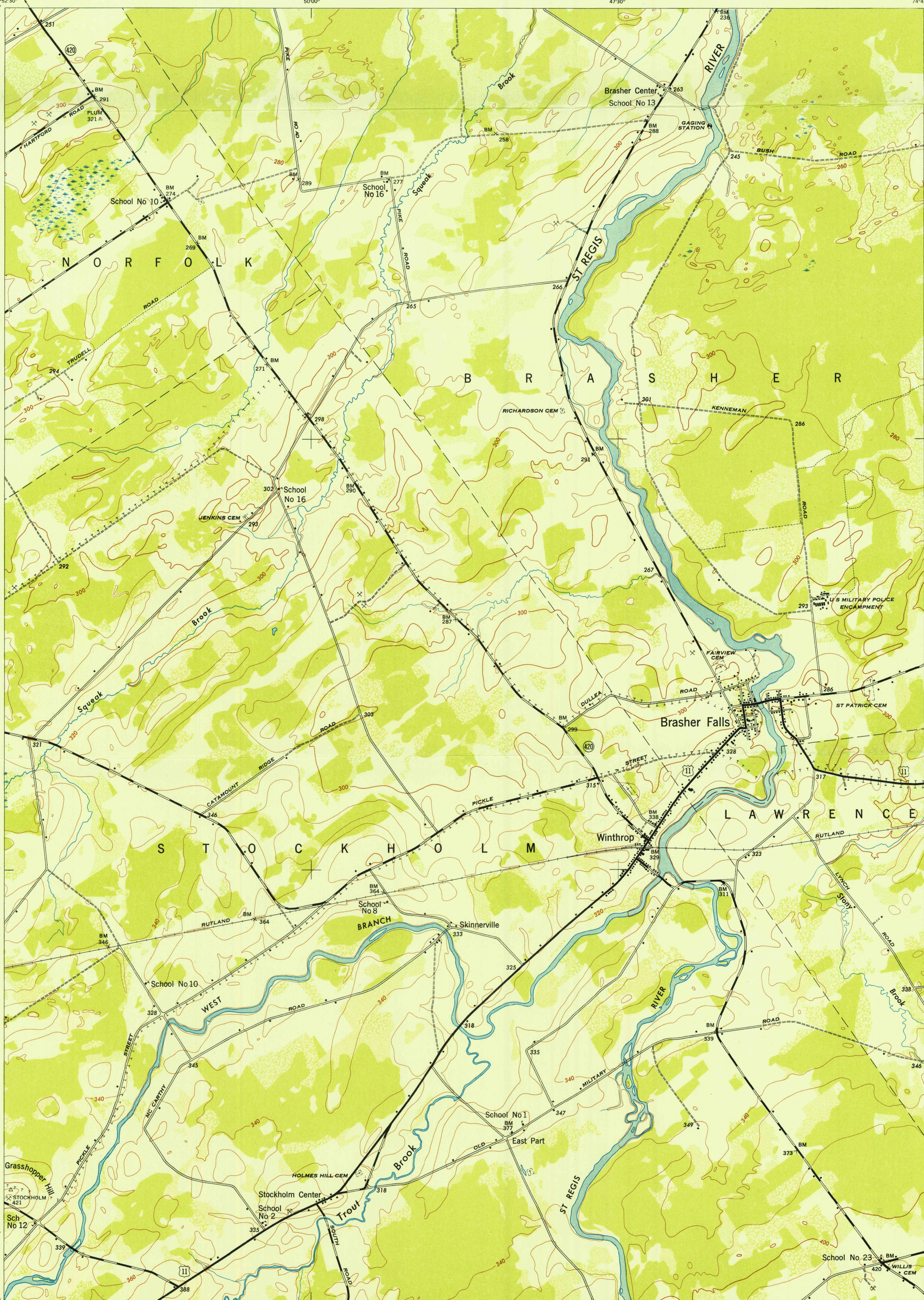
44°52'30"

74°52'30"

0°
47'30"

74°45'00"

44°52'30"



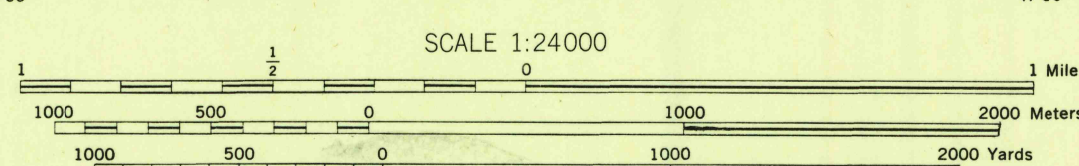
A.M.S. V821

First Edition (AMS 1), 1943; (AMS 2), 1946.

Prepared under the direction of the Chief of Engineers by the Army Map Service (AMS), U. S. Army, Washington, D. C. Copied in 1946 from New York, 1:31,680, AMS, Sheet 6073 IV SE, 1943. Original map compiled by TVA from wide angle aerial photography by photo-stereometric and planimetric methods. Aerial photography for TVA, 1942. Horizontal and vertical control by USCGS, USGS and TVA. Scale changed and marginal data revised, 1946. This map complies with the national standard map accuracy requirements.

LEGEND
ROAD DATA 1942

Hard surface, heavy duty road, more than two lanes wide	Loose surface, graded, dry-weather road
Hard surface, heavy duty road, two lanes wide; Federal route marker	Trail; Dirt road
Secondary, hard surface, all-weather road, two lanes wide; State route marker	Railroad in street; Carline in street
RAILROADS	ABANDONED
Standard gauge	Single track
Narrow gauge	Double track
Single track carline	Double track carline
BOUNDARIES	
International	Mine
State	Triangulation station
County (with monument)	Bench mark
County subdivision	Spot elevation
Reservation	Woods
Military reservation	Woods-brushwood
School; Church	Brushwood
Cemetery	Orchard
Churchyard	Vineyard
	Intermittent lake
	Intermittent stream
	Dam
	Rapids; Falls
	Large rapids and falls
	Swamp, marsh
	Rocks awash at low tide
	Wharf, pier
	Man-made shoreline



CONTOUR INTERVAL 20 FEET

DATUM IS MEAN SEA LEVEL

POLYCONIC PROJECTION

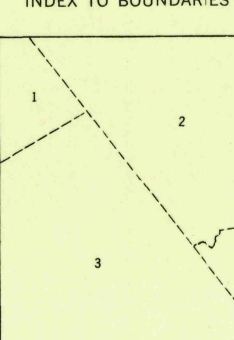
1927 NORTH AMERICAN DATUM

REPRINTED FROM MILITARY EDITION FOR CIVIL USE
SOLD AND DISTRIBUTED BY U. S. GEOLOGICAL SURVEY, WASHINGTON 25, D. C.

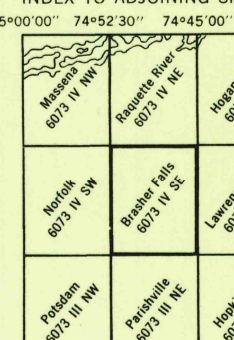
USGS
Historical File
Topographic Division

APPROXIMATE MEAN DECLINATION 1946
FOR CENTER OF SHEET
ANNUAL MAGNETIC CHANGE 1' EASTERLY

INDEX TO BOUNDARIES



INDEX TO ADJOINING SHEETS



BRASHER FALLS, NEW YORK
ST. LAWRENCE COUNTY
N4445-W744577.5

JUL 21 1949 2055