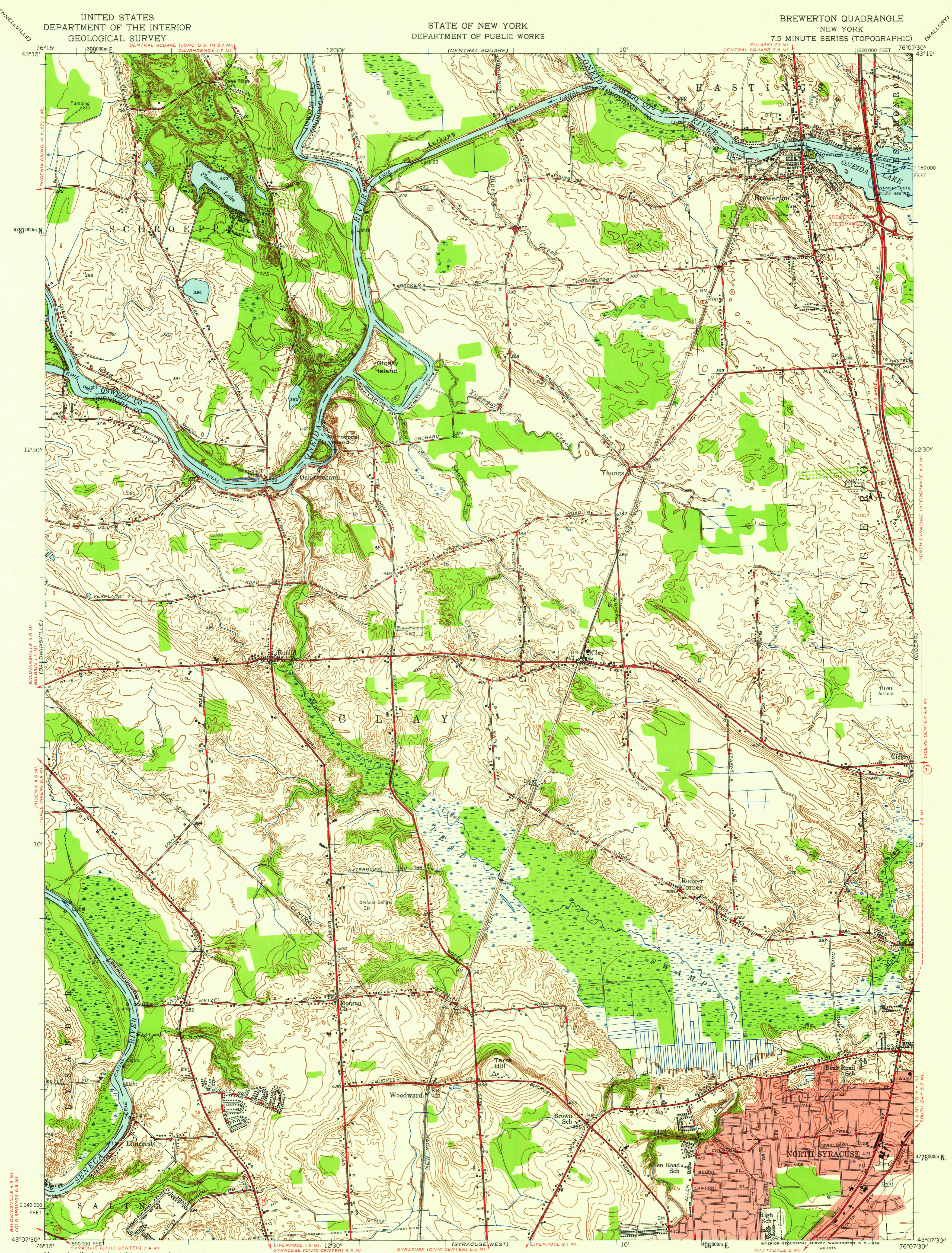


UNITED STATES  
DEPARTMENT OF THE INTERIOR  
GEOLOGICAL SURVEY

STATE OF NEW YORK  
DEPARTMENT OF PUBLIC WORKS

BREWERTON QUADRANGLE  
NEW YORK  
7.5 MINUTE SERIES (TOPOGRAPHIC)



Mapped, edited, and published by the Geological Survey

Control by USGS, USC&GS, and U. S. Lake Survey

Topography by planetable surveys 1939-1940

Revised 1957

Hydrography compiled from U. S. Lake Survey

charts 1825, 1826, and 1827 (1956)

Polyconic projection. 1927 North American datum

10,000-foot grid based on New York coordinate system,

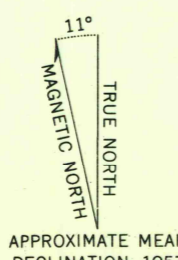
central zone

1000-meter Universal Transverse Mercator grid ticks,

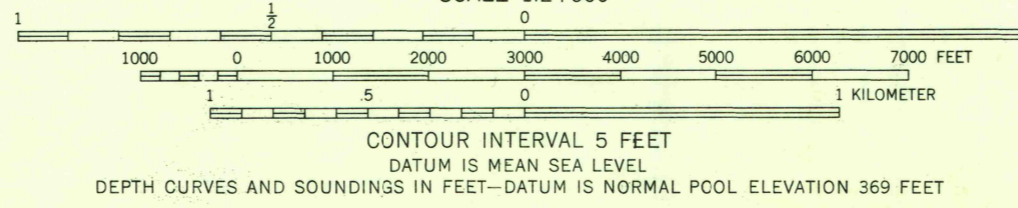
zone 18, shown in blue

Red tint indicates area in which only

landmark buildings are shown



APPROXIMATE MEAN  
DECLINATION, 1957



CONTOUR INTERVAL 5 FEET  
DATUM IS MEAN SEA LEVEL  
DEPTH CURVES AND SOUNDINGS IN FEET-DATUM IS NORMAL POOL ELEVATION 369 FEET

THIS MAP COMPLIES WITH NATIONAL MAP ACCURACY STANDARDS  
FOR SALE BY U. S. GEOLOGICAL SURVEY, WASHINGTON 25, D. C.  
A FOLDER DESCRIBING TOPOGRAPHIC MAPS AND SYMBOLS IS AVAILABLE ON REQUEST

USGS  
Historical File  
Topographic Division



QUADRANGLE LOCATION

ROAD CLASSIFICATION  
Heavy-duty ——— Light-duty ———  
Medium-duty ——— Unimproved dirt ———  
Interstate Route U. S. Route State Route

USGS  
FILE COPY  
TOPOGRAPHIC DIVISION

BREWERTON, N. Y.  
N 4307.5-W 7607.5/7.5

1957

APR 27, 1959

2925