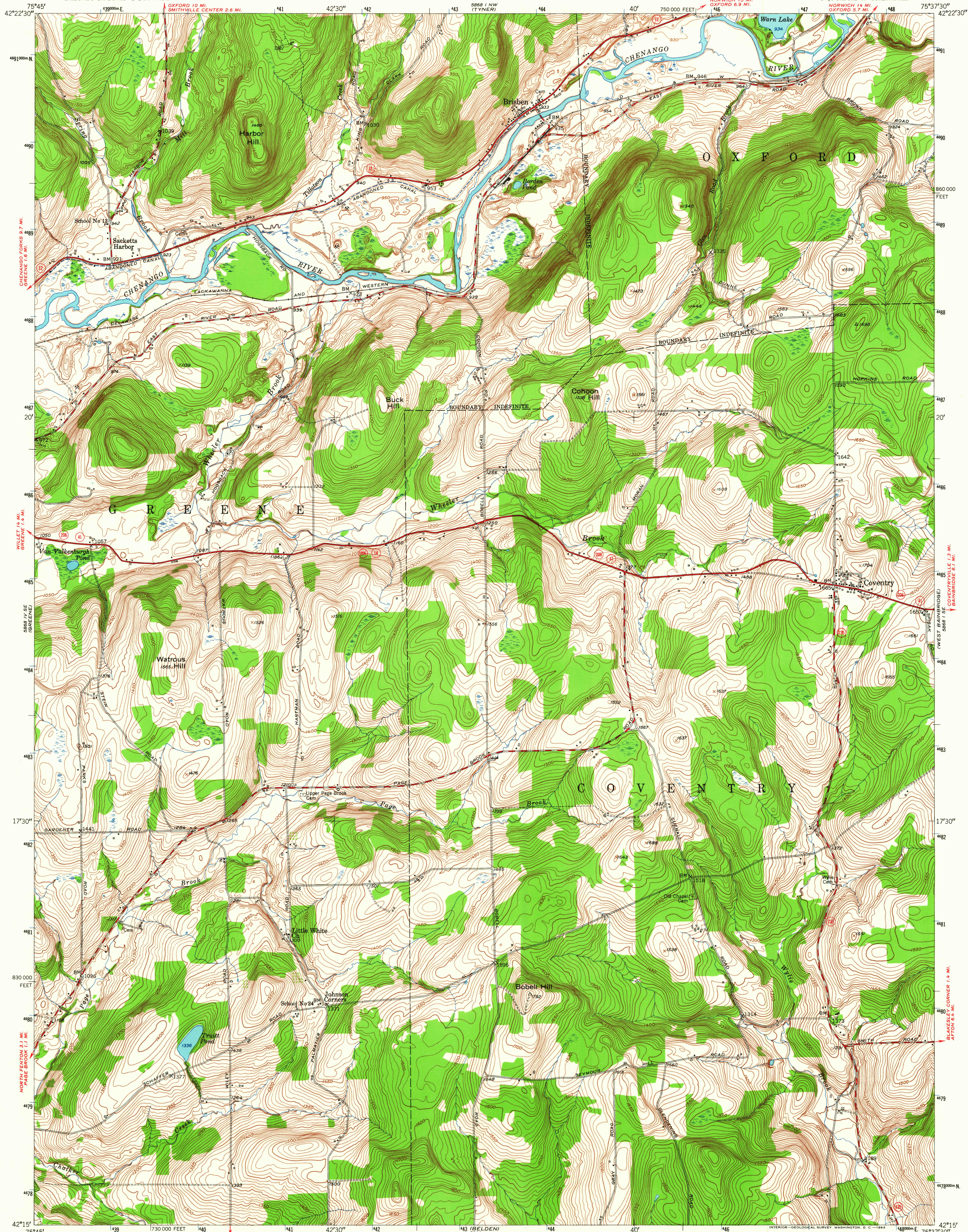
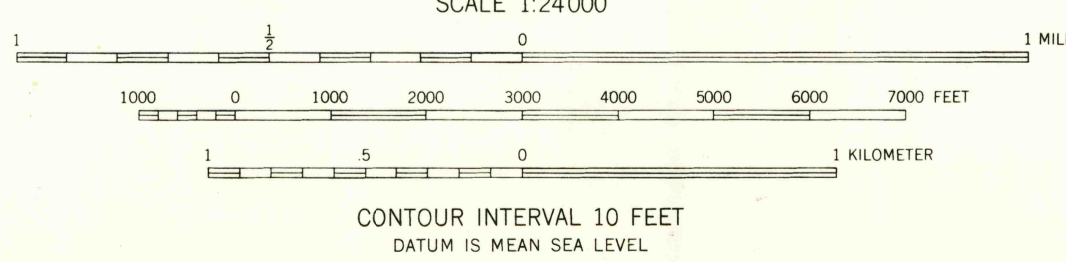
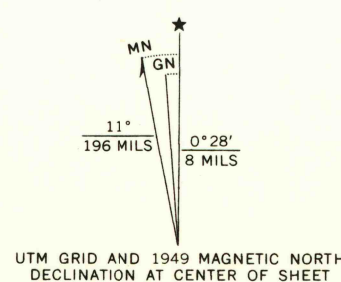


UNITED STATES
DEPARTMENT OF THE INTERIOR
GEOLOGICAL SURVEY

BRISBEN QUADRANGLE
NEW YORK-CHENANGO CO.
7.5 MINUTE SERIES (TOPOGRAPHIC)
SW/4 OXFORD 15' QUADRANGLE



Mapped, edited, and published by the Geological Survey
Control by USGS and USC&GS
Topography from aerial photographs by multiplex methods
Aerial photographs taken 1944. Field check 1949
Polyconic projection. 1927 North American datum
10,000-foot grid based on New York coordinate system,
central zone
1000-meter Universal Transverse Mercator grid ticks,
zone 18, shown in blue



USGS
Historical File
Topographic Division

ROAD CLASSIFICATION
Heavy-duty ——— Light-duty ———
Medium-duty ——— Unimproved dirt ———
State Route —○—



U.S.G.S.
FILE COPY
TOPOGRAPHIC DIVISION

BRISBEN, N. Y.
SW/4 OXFORD 15' QUADRANGLE
N4215-W7537.5/7.5
1949
AMS 5868 I SW-SERIES V821

JUL 7 1964

1390