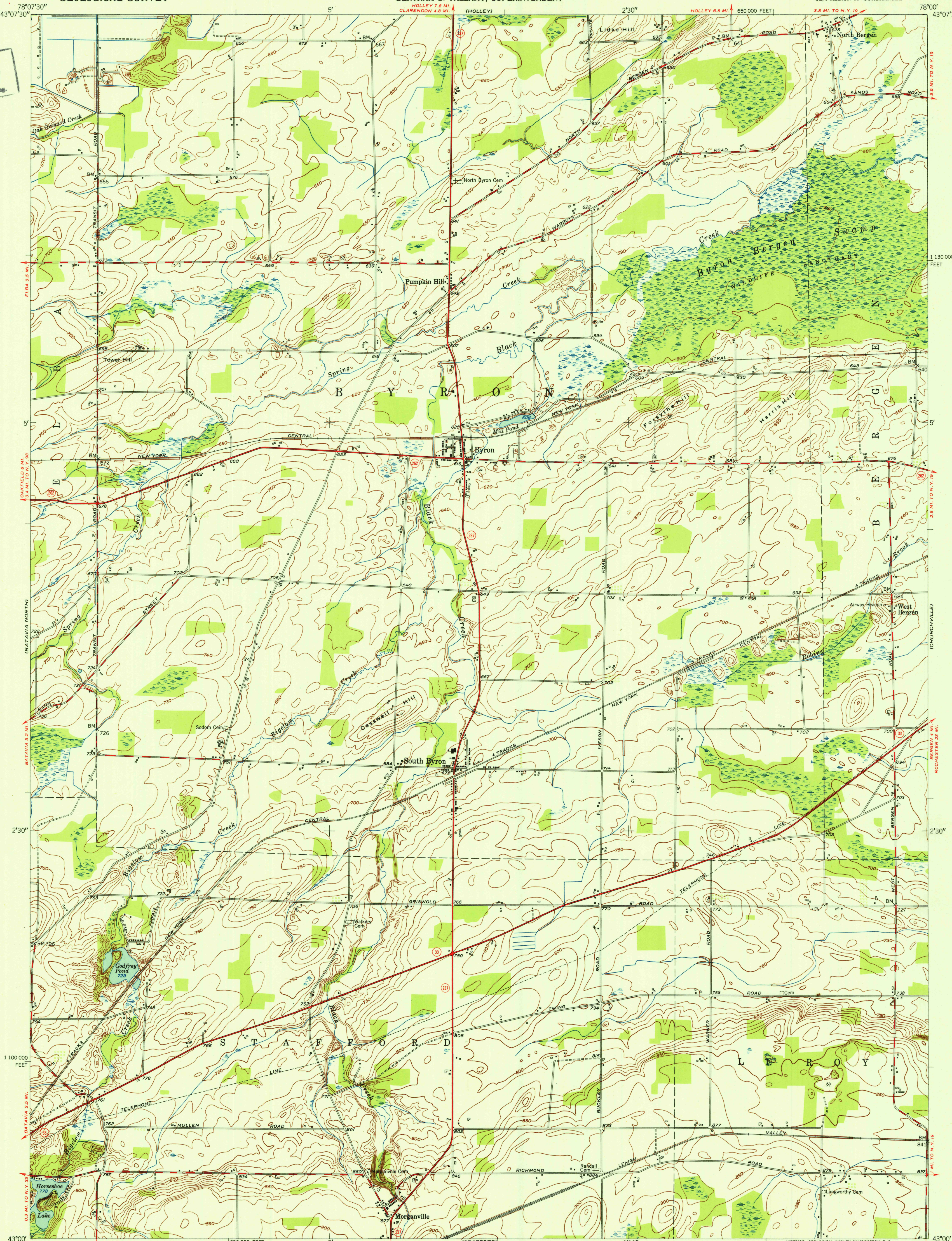
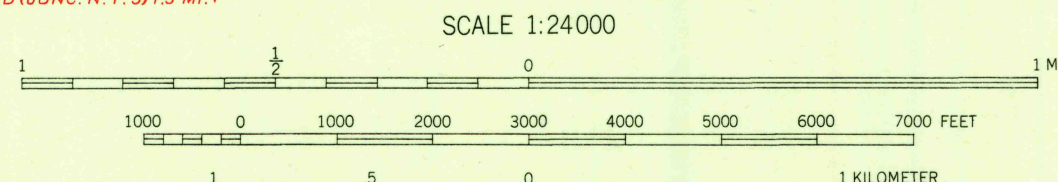


U. S. G. S.
FILE COPY
Inspection and Editing.



Maped, edited, and published by the Geological Survey
Control by USGS and USC&GS
Culture and drainage in part compiled by Corps of Engineers,
Dept. of the Army, from aerial photographs taken 1942
Topography by plane-table methods 1950
Polyconic projection. 1927 North American datum
10,000-foot grid based on New York coordinate system,
west zone



ROAD CLASSIFICATION
Heavy-duty 4 LANE 16 LANE Light-duty
Medium-duty 4 LANE 16 LANE Unimproved dirt
U. S. Route State Route

BYRON, N. Y.
SE/4 ALBION 15' QUADRANGLE
N4300-W7800/7.5

EDITION OF 1952

THIS MAP COMPLIES WITH NATIONAL MAP ACCURACY STANDARDS
FOR SALE BY U. S. GEOLOGICAL SURVEY, WASHINGTON 25, D. C.
A FOLDER DESCRIBING TOPOGRAPHIC MAPS AND SYMBOLS IS AVAILABLE ON REQUEST

U. S. G. S.
FILE COPY
Inspection and Editing.