

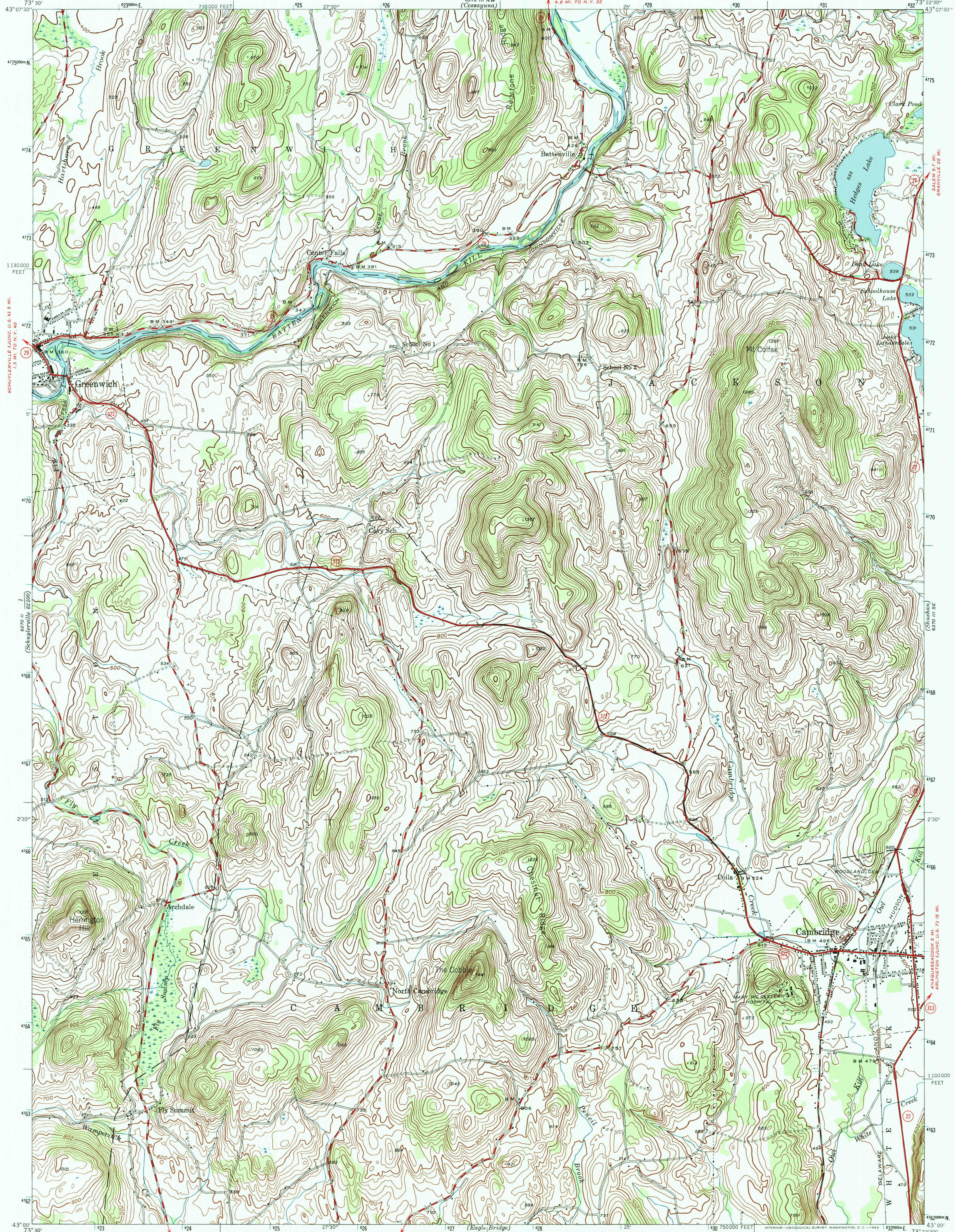
(Schuylerville)
62300
62300

UNITED STATES
DEPARTMENT OF THE INTERIOR
GEOLOGICAL SURVEY

UNITED STATES
DEPARTMENT OF THE ARMY
CORPS OF ENGINEERS

NEW YORK
(WASHINGTON COUNTY)
CAMBRIDGE QUADRANGLE
7 1/2-MINUTE SERIES

6370 III NE
6370 III NE
(Salem)



Mapped by the Geological Survey
1944

ROAD CLASSIFICATION
Heavy-duty ——— 4 LANE 6 LANE Light-duty ———
Medium-duty ——— 4 LANE 6 LANE Unimproved dirt ———
U. S. Route ——— State Route ———

UTM GRID AND 1944 MAGNETIC NORTH
DECLINATION AT CENTER OF SHEET

SCALE 1:24000
1000 0 1000 2000 3000 4000 5000 6000 7000 FEET
1 5 0 1 KILOMETER
Contour interval 20 feet
Datum is mean sea level

FOR SALE BY U.S. GEOLOGICAL SURVEY, WASHINGTON 25, D. C.
A FOLDER DESCRIBING TOPOGRAPHIC MAPS AND SYMBOLS IS AVAILABLE ON REQUEST

Polyconic projection. 1927 North American datum

10000 foot grid based on New York (East)
rectangular coordinate system
1000-meter Universal Transverse Mercator grid ticks,
zone 18, shown in blue

CAMBRIDGE, N. Y.

N 4300-W 7322.5/7.5

1944

AMS 6370 III SW-SERIES V821

RECEIVED
JUL 3 1 2000

USGS (WFO)
HISTORICAL MAP ARCHIVES

ISBN 0-607-41226-3
9 780607 412284