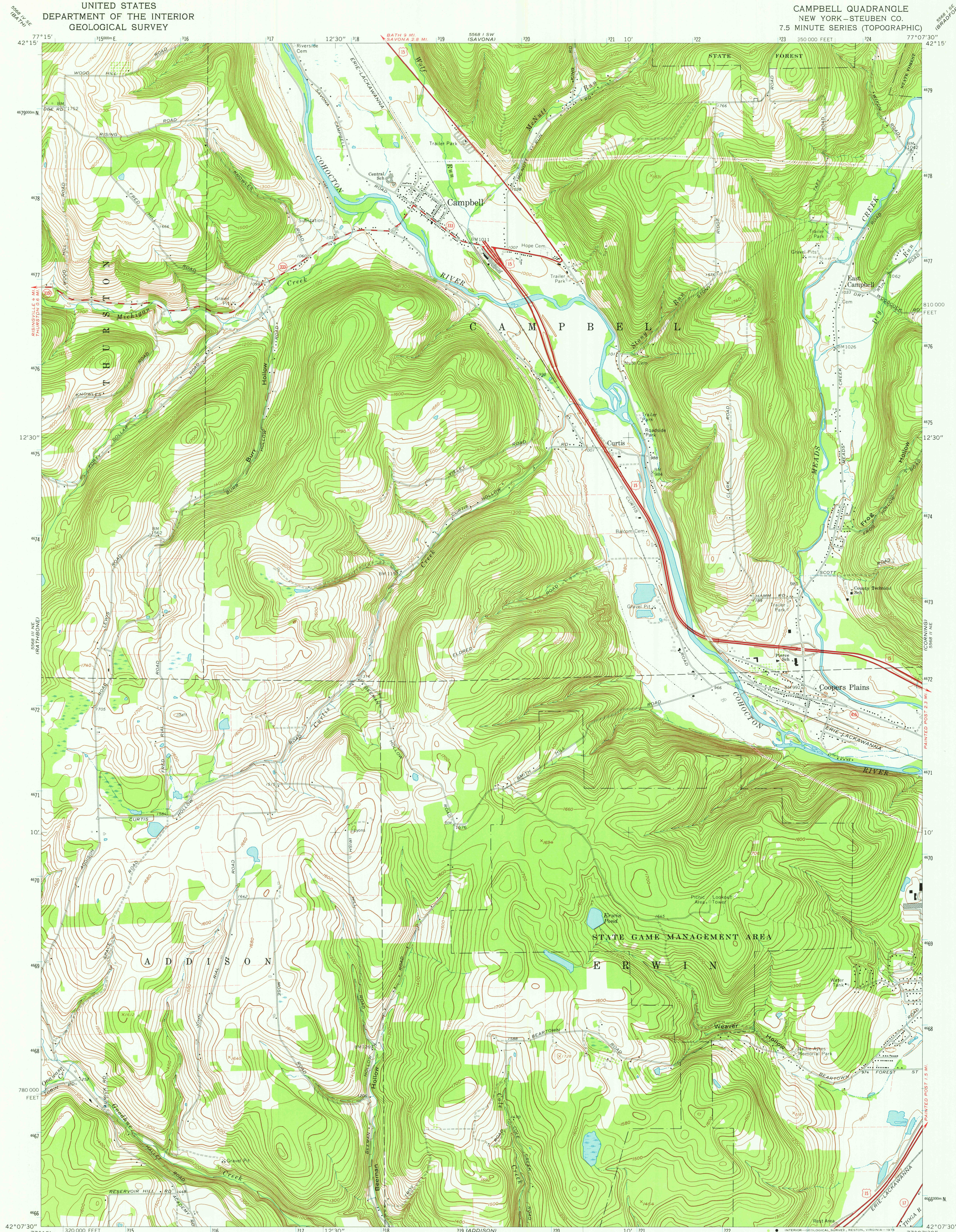


UNITED STATES  
DEPARTMENT OF THE INTERIOR  
GEOLOGICAL SURVEY

CAMPBELL QUADRANGLE  
NEW YORK—STEBEN CO.  
7.5 MINUTE SERIES (TOPOGRAPHIC)



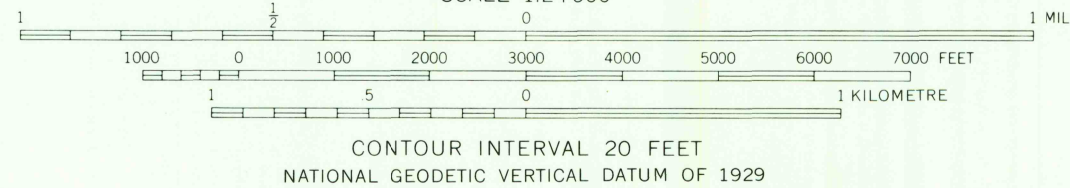
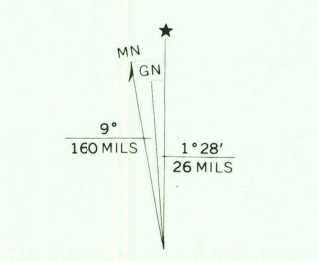
Mapped, edited, and published by the Geological Survey  
Revised in cooperation with New York Department  
of Transportation

Control by USGS and USC&GS

Topography by photogrammetric methods from aerial photographs  
taken 1952. Field checked 1953. Revised from aerial  
photographs taken 1968. Field checked 1969

Polyconic projection. 1927 North American datum  
10,000-foot grid based on New York coordinate system, central zone  
1000-metre Universal Transverse Mercator grid ticks,  
zone 18, shown in blue

Fine red dashed lines indicate selected fence and field lines where  
generally visible on aerial photographs. This information is unchecked



THIS MAP COMPLIES WITH NATIONAL MAP ACCURACY STANDARDS  
FOR SALE BY U. S. GEOLOGICAL SURVEY, RESTON, VIRGINIA 22092  
A FOLDER DESCRIBING TOPOGRAPHIC MAPS AND SYMBOLS IS AVAILABLE ON REQUEST

ROAD CLASSIFICATION  
Primary highway, all weather, hard surface  
Secondary highway, all weather, hard surface  
Light duty road, all weather, improved surface  
Unimproved road, fair or dry weather  
U. S. Route  
State Route



CAMPBELL, N. Y.  
N4207.5—W7707.5/7.5

USGS  
Historical File  
Topographic Division

1969  
AMS 5568 II NW—SERIES V821

JUL 1 2 1976