

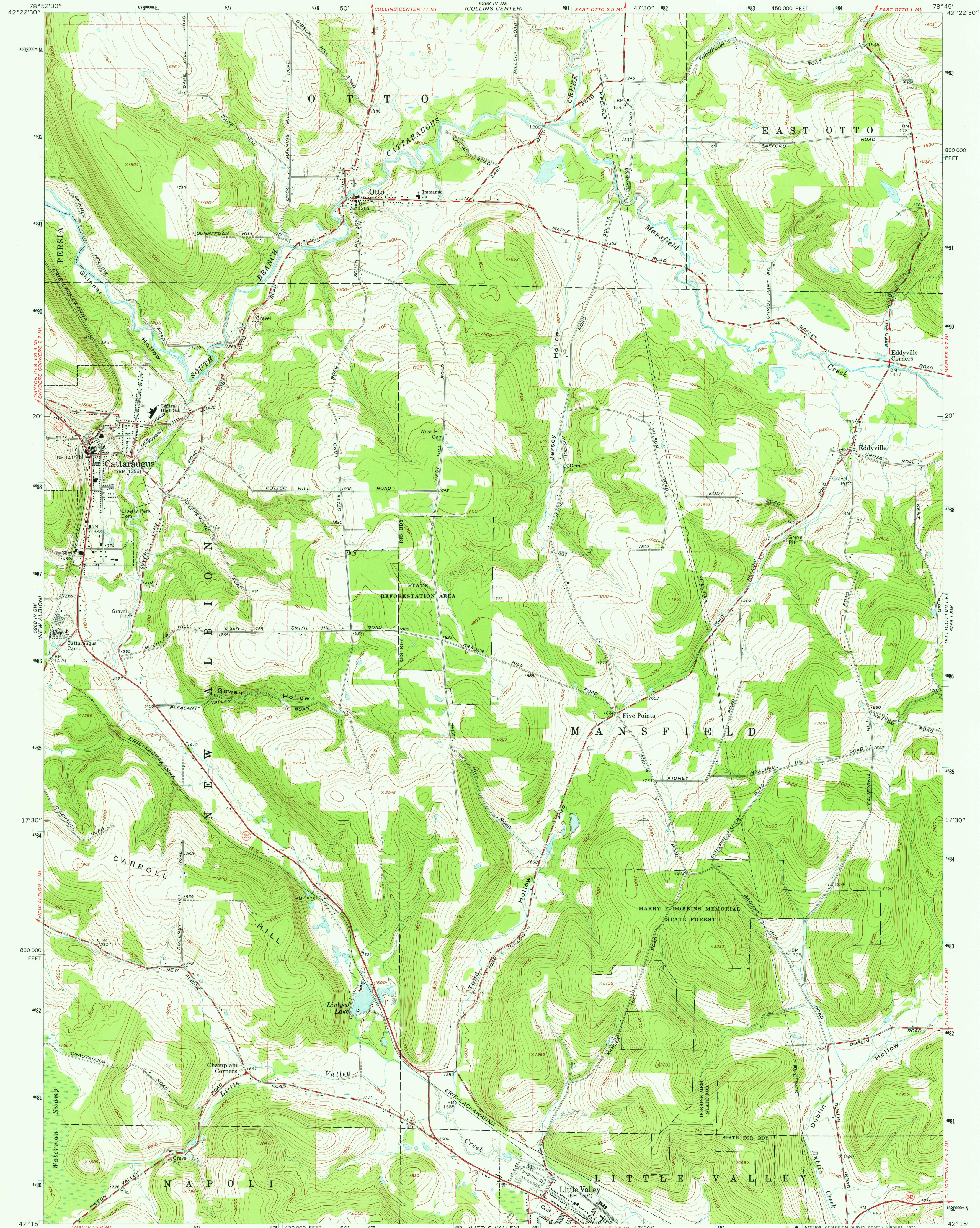
5268 IV NW
(GOWANDA)

UNITED STATES
DEPARTMENT OF THE INTERIOR
GEOLOGICAL SURVEY

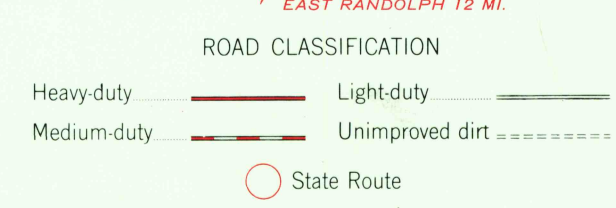
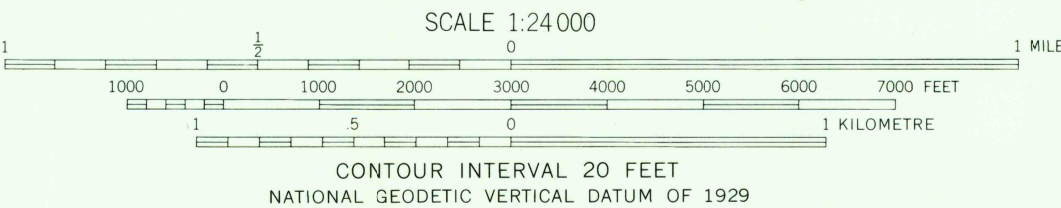
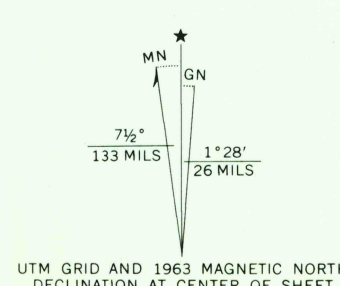
STATE OF NEW YORK
DEPARTMENT OF PUBLIC WORKS

CATTARAUGUS QUADRANGLE
NEW YORK-CATTARAUGUS CO.
7.5 MINUTE SERIES (TOPOGRAPHIC)

5268 IV NW
(ASHFORD HOLLOW)



Mapped, edited, and published by the Geological Survey
Control by USGS and USC&GS
Topography by photogrammetric methods from aerial photographs
taken 1962. Field checked 1963
Polyconic projection. 1927 North American datum
10,000-foot grid based on New York coordinate system, west zone
1000-metre Universal Transverse Mercator grid ticks,
zone 17, shown in blue
Fine red dashed lines indicate selected fence and field lines where
generally visible on aerial photographs. This information is unchecked



THIS MAP COMPLIES WITH NATIONAL MAP ACCURACY STANDARDS
FOR SALE BY U. S. GEOLOGICAL SURVEY, RESTON, VIRGINIA 22092
A FOLDER DESCRIBING TOPOGRAPHIC MAPS AND SYMBOLS IS AVAILABLE ON REQUEST

USGS
Historical File
Topographic Division

CATTARAUGUS, N. Y.
N4215-W7845/7.5
1963
AMS 5268 IV SE-SERIES V821

JUL 10 1976