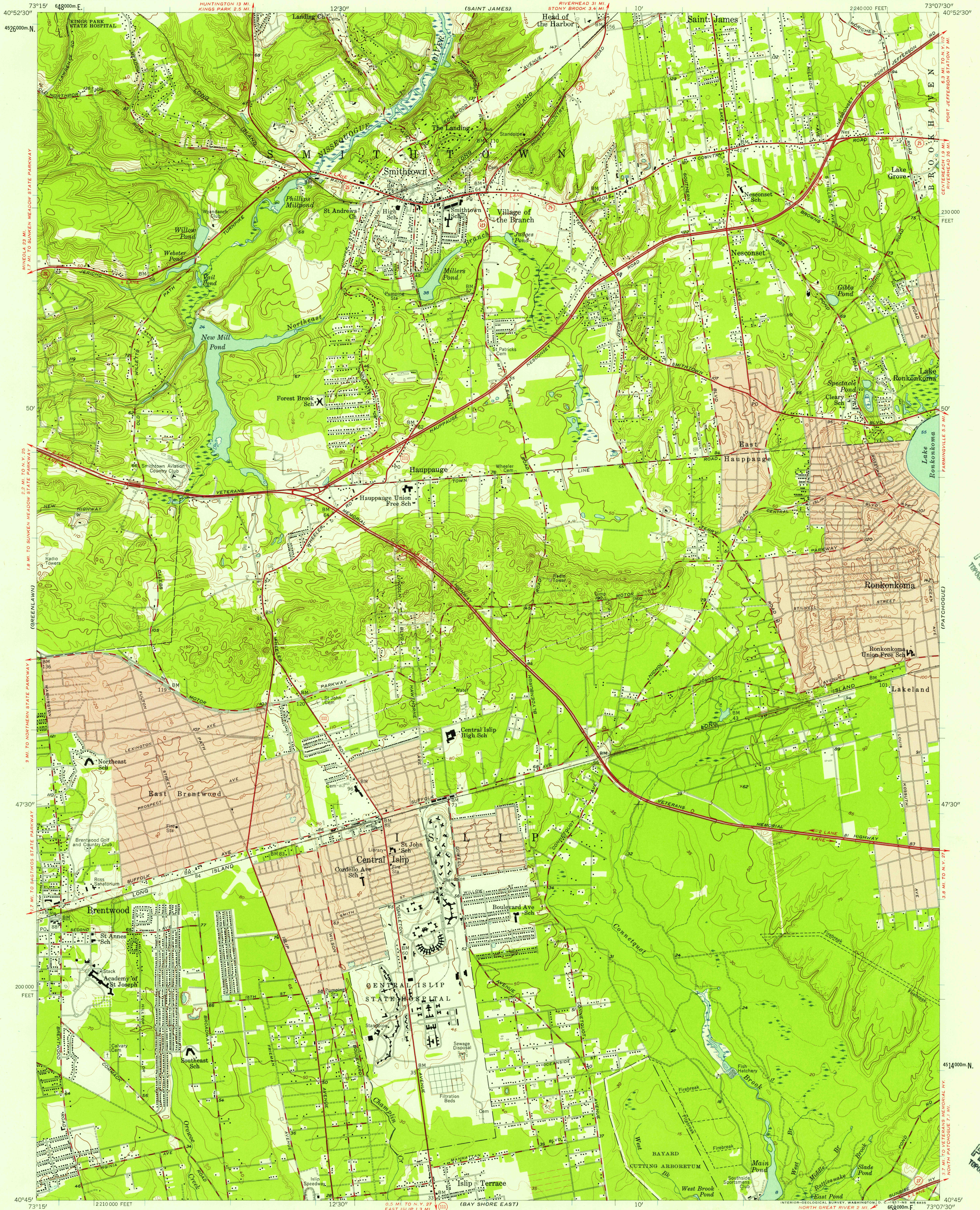


UNITED STATES
DEPARTMENT OF THE INTERIOR
GEOLOGICAL SURVEY

CENTRAL ISLIP QUADRANGLE
NEW YORK—SUFFOLK CO.
7.5 MINUTE SERIES (TOPOGRAPHIC)
SW/4 SETAUKET 15' QUADRANGLE

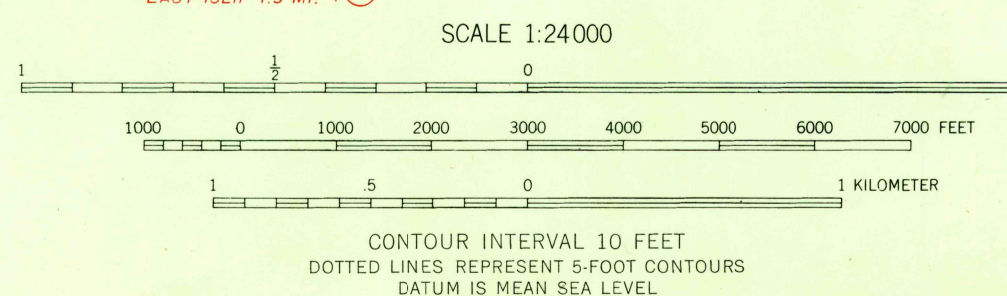


U.S.G.S.
FILE COPY
TOPOGRAPHIC DIVISION

U.S.G.S.
FILE COPY
TOPOGRAPHIC DIVISION

Mapped, edited, and published by the Geological Survey
Control by USGS and USC&GS
Topography from aerial photographs by Kelsh plotter and
by planimeter surveys 1956. Aerial photographs taken 1954
Polyconic projection. 1927 North American datum
10,000-foot grid based on New York coordinate system,
Long Island zone. 1,000-meter Universal Transverse
Mercator grid ticks, zone 18, shown in blue
Red tint indicates areas in which only landmark
buildings are shown
Fine red dashed lines indicate selected fence and field lines
visible on aerial photographs. This information is unchecked

APPROXIMATE MEAN
DECLINATION, 1956



USGS
Historical File
Topographic Division



ROAD CLASSIFICATION
Heavy-duty ——— Light-duty ———
Medium-duty ——— Unimproved dirt ———
State Route ———

CENTRAL ISLIP, N. Y.
SW/4 SETAUKET 15' QUADRANGLE
N4045—W7307.5/7.5

1956

SEP 27 1957

3660