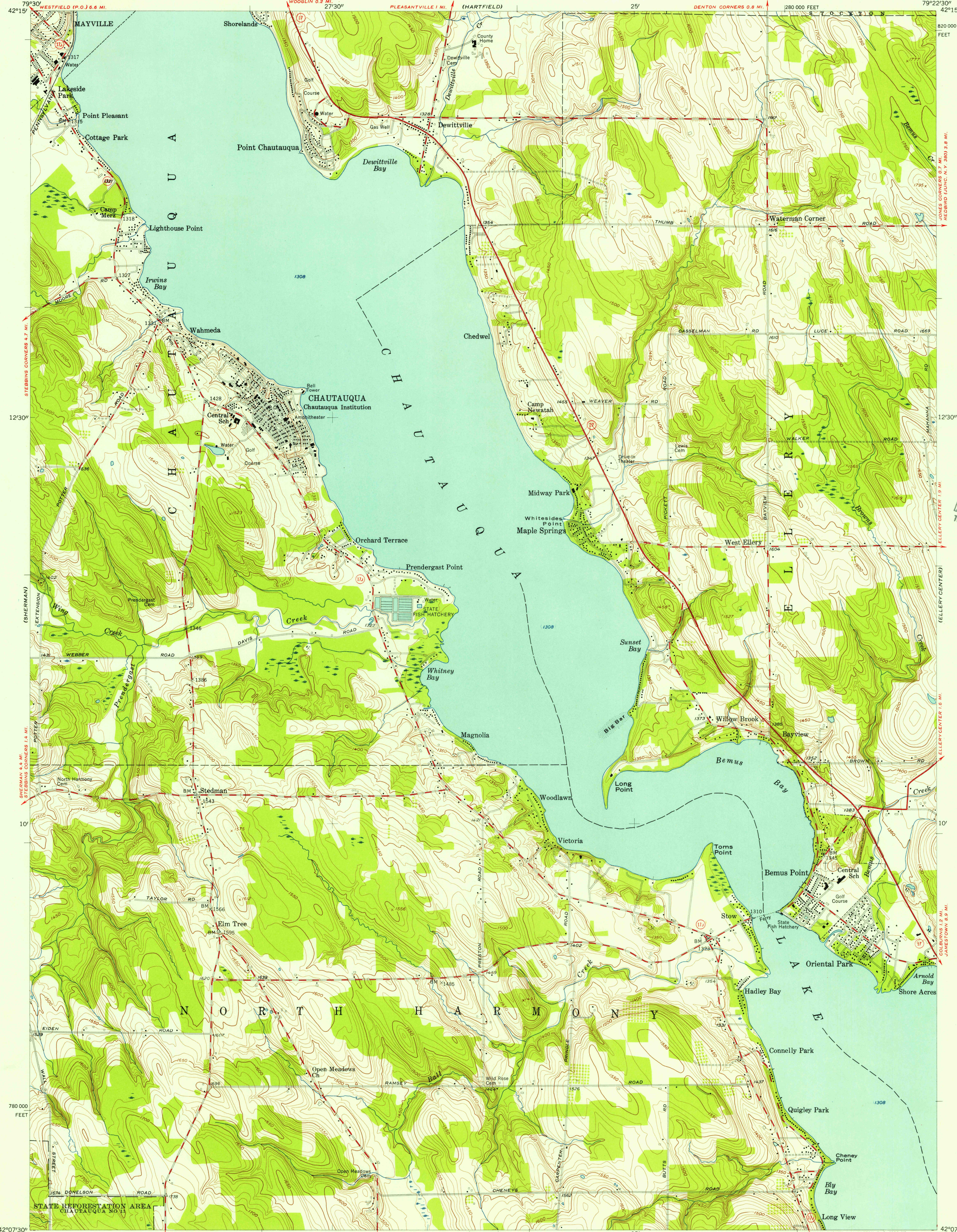


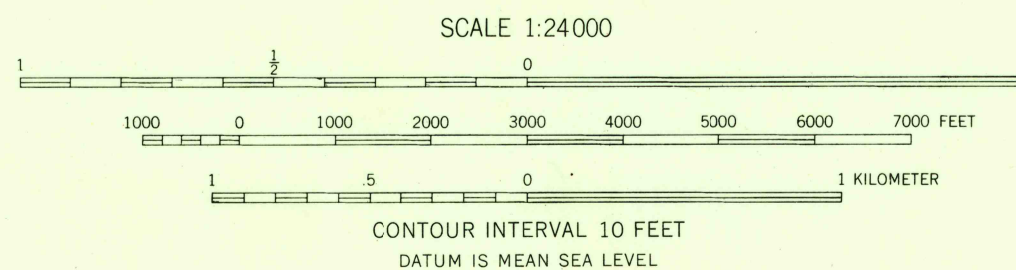
UNITED STATES
DEPARTMENT OF THE INTERIOR
GEOLOGICAL SURVEY

CHAUTAUQUA QUADRANGLE
NEW YORK—CHAUTAUQUA CO.
7.5 MINUTE SERIES (TOPOGRAPHIC)
NW 1/4 CHAUTAUQUA 15' QUADRANGLE



Mapped, edited, and published by the Geological Survey
Control by USGS
Topography from aerial photographs by photogrammetric
methods. Aerial photographs taken 1953. Field check 1954
Polyconic projection. 1927 North American datum
10,000-foot grid based on New York coordinate system,
west zone
Unchecked elevations are shown in brown

TRUE NORTH
MAGNETIC NORTH
APPROXIMATE MEAN
DECLINATION, 1954



ROAD CLASSIFICATION
Heavy-duty ——— Light-duty ———
Medium-duty ——— Unimproved dirt ———
U. S. Route ——— State Route ———

CHAUTAUQUA, N. Y.
NW 1/4 CHAUTAUQUA 15' QUADRANGLE
N 4207.5—W 7922.5/7.5

1954

DEC 5 1956