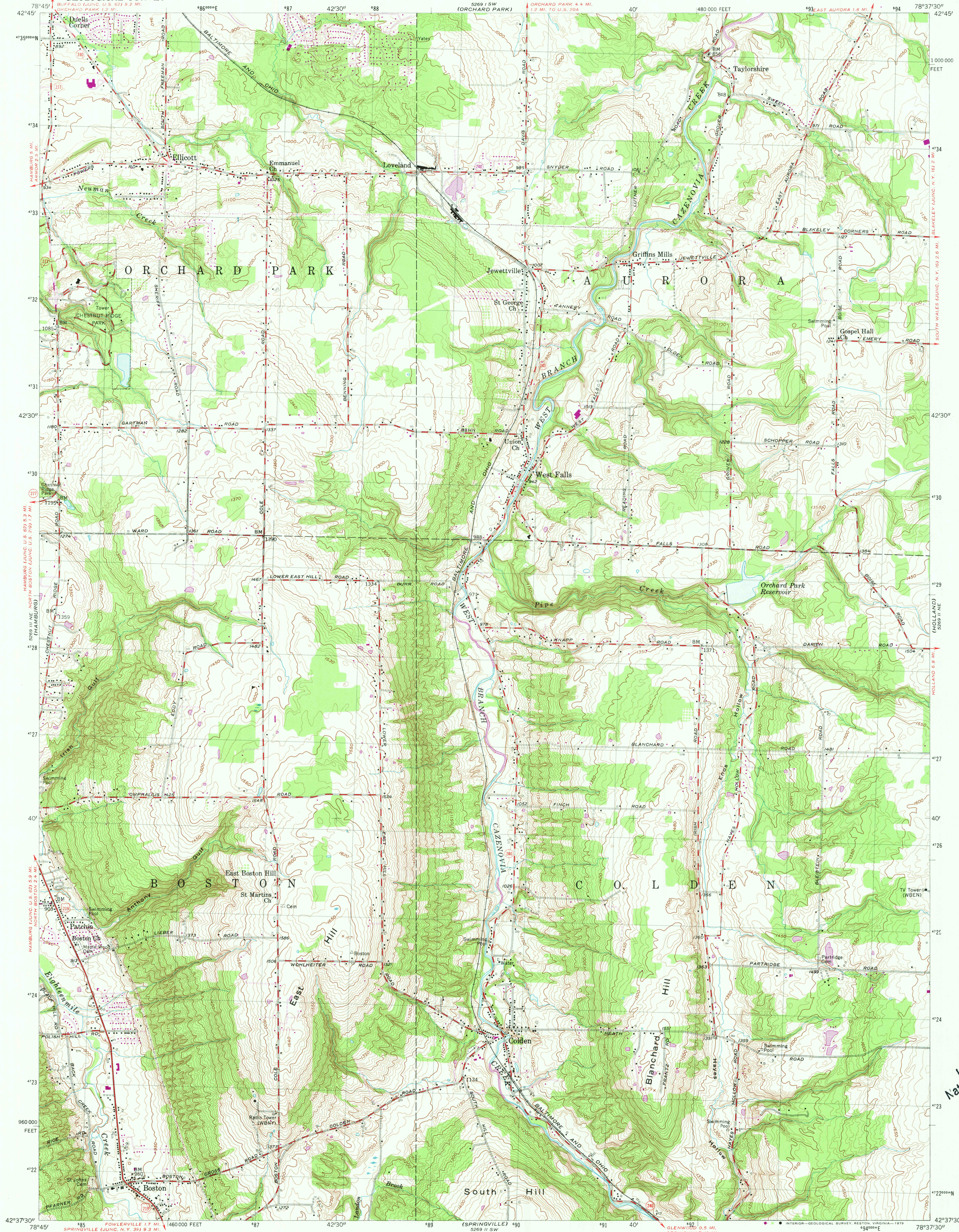


UNITED STATES  
DEPARTMENT OF THE INTERIOR  
GEOLOGICAL SURVEY

COLDEN QUADRANGLE  
NEW YORK—ERIE CO.  
7.5 MINUTE SERIES (TOPOGRAPHIC)

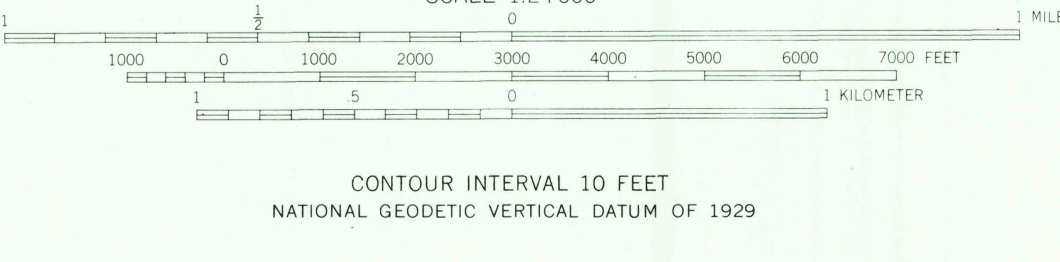
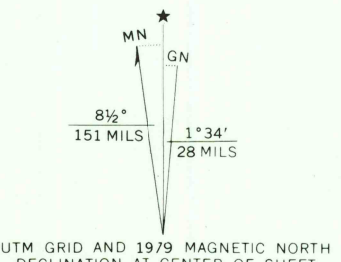
5269 I SE  
EAST AURORA



USGS  
Historical File  
National Mapping D

J.

Maped, edited, and published by the Geological Survey  
Control by USGS and USC&GS  
Topography from aerial photographs by stereoplanigraph  
Aerial photographs taken 1952. Field check 1955  
Polyconic projection. 1927 North American datum  
10,000-foot grid based on New York coordinate system,  
west zone  
Unchecked elevations are shown in brown  
1000 meter Universal Transverse Mercator grid, zone 17  
Revisions shown in purple and woodland compiled from  
aerial photographs taken 1976 and other source data.  
This information not field checked. Map edited 1979



ROAD CLASSIFICATION	
Heavy-duty	Light-duty
Medium-duty	Unimproved dirt
U. S. Route	State Route

COLDEN, N. Y.  
N 4237.5—W 7837.5/7.5

1955  
PHOTO REVISSED 1979  
AMS 5269 I NW—SERIES V821

THIS MAP COMPLIES WITH NATIONAL MAP ACCURACY STANDARDS  
FOR SALE BY U.S. GEOLOGICAL SURVEY, RESTON VIRGINIA 22092  
A FOLDER DESCRIBING TOPOGRAPHIC MAPS AND SYMBOLS IS AVAILABLE ON REQUEST

MAR 25 1981  
3500