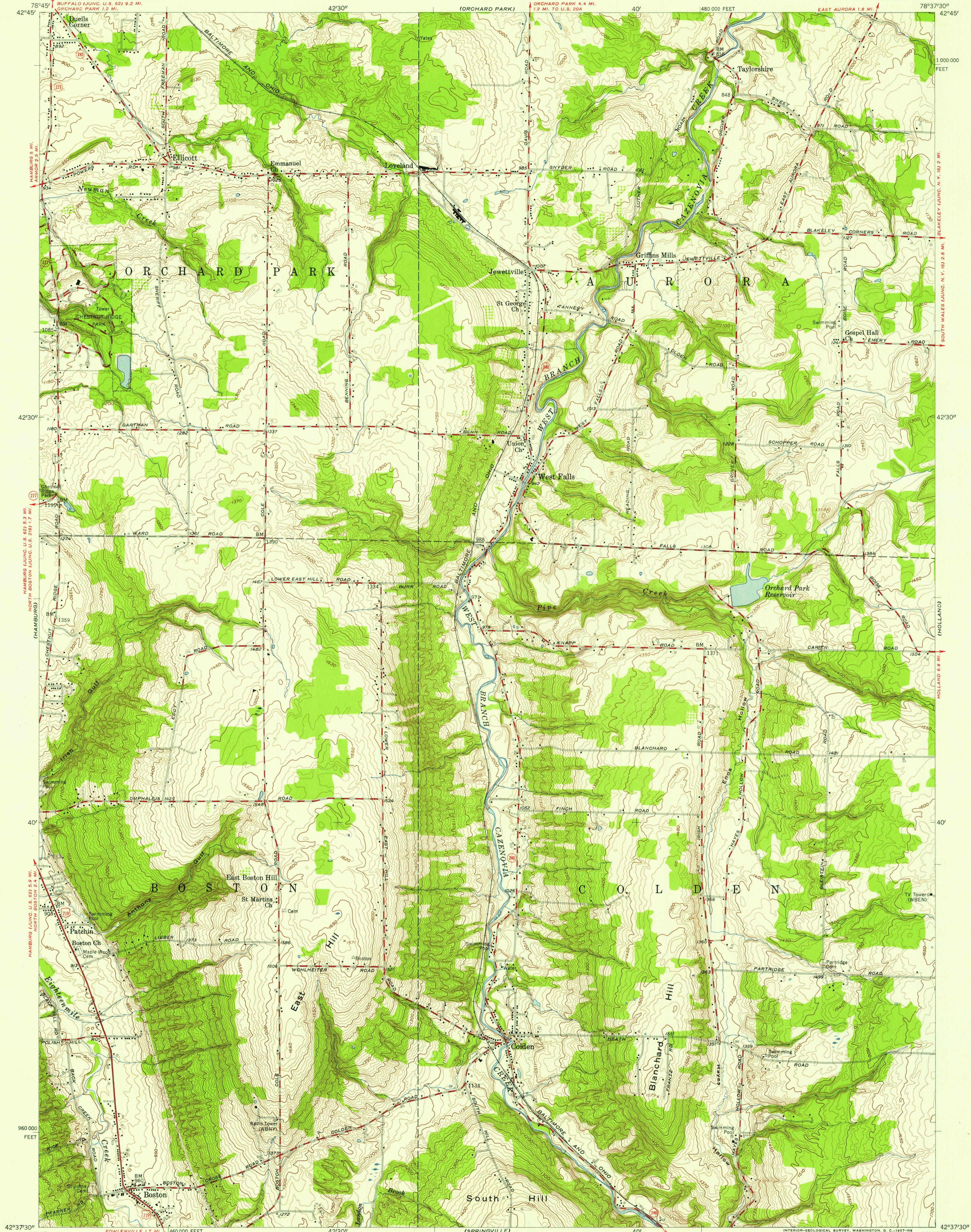


UNITED STATES
DEPARTMENT OF THE INTERIOR
GEOLOGICAL SURVEY

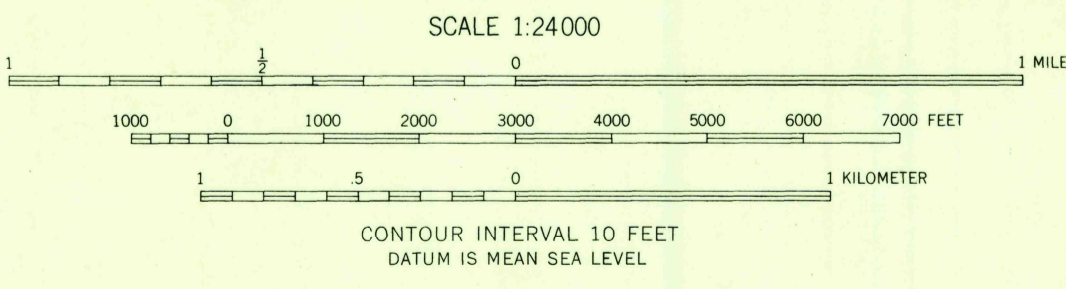
COLDEN QUADRANGLE
NEW YORK—ERIE CO.
7.5 MINUTE SERIES (TOPOGRAPHIC)
NW/4 SPRINGVILLE 15' QUADRANGLE



U.S.G.S.
FILE COPY
TOPOGRAPHIC DIVISION

Maped, edited, and published by the Geological Survey
Control by USGS and USC&GS
Topography from aerial photographs by stereoplanigraph
Aerial photographs taken 1952. Field check 1955
Polyconic projection. 1927 North American datum
10,000-foot grid based on New York coordinate system,
west zone
Unchecked elevations are shown in brown

TRUE NORTH
MAGNETIC NORTH
APPROXIMATE MEAN
DECLINATION, 1955



USGS
Historical File
Topographic Division
NEW YORK
QUADRANGLE LOCATION

ROAD CLASSIFICATION
Heavy-duty ——— Light-duty ———
Medium-duty ——— Unimproved dirt ———
U. S. Route ——— State Route ———

U.S.G.S.
FILE COPY
TOPOGRAPHIC DIVISION

COLDEN, N. Y.
NW/4 SPRINGVILLE 15' QUADRANGLE
N 4237.5—W 7837.5/7.5

1955

MAY 2 1957

THIS MAP COMPLIES WITH NATIONAL MAP ACCURACY STANDARDS
FOR SALE BY U. S. GEOLOGICAL SURVEY, WASHINGTON 25, D. C.
A FOLDER DESCRIBING TOPOGRAPHIC MAPS AND SYMBOLS IS AVAILABLE ON REQUEST

3650