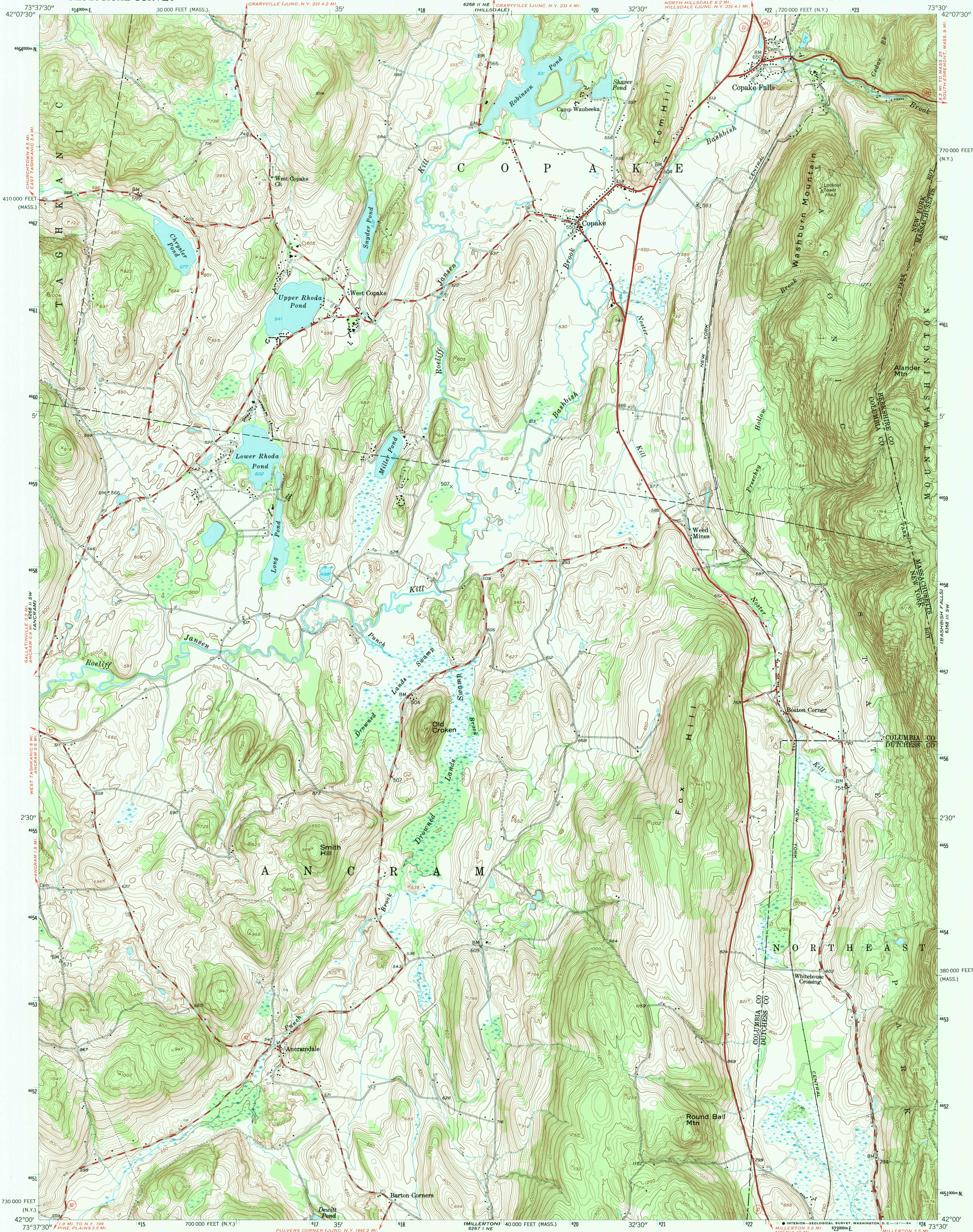


UNITED STATES  
DEPARTMENT OF THE INTERIOR  
GEOLOGICAL SURVEY

COPAKE QUADRANGLE  
NEW YORK-MASSACHUSETTS  
7.5 MINUTE SERIES (TOPOGRAPHIC)  
SE/4 COPAKE 15' QUADRANGLE



Mapped, edited, and published by the Geological Survey

Control by USGS and USC&GS

Topography in Massachusetts by plane-table surveys 1946

Topography in New York from aerial photographs by multiplex methods

Aerial photographs taken 1949. Field check 1953

Polyconic projection. 1927 North American datum

10,000-foot grids based on New York coordinate system,

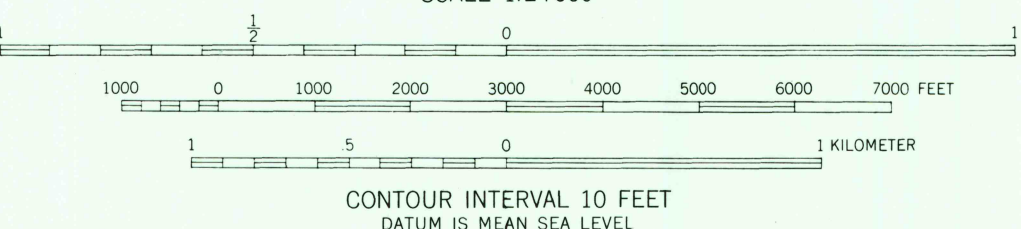
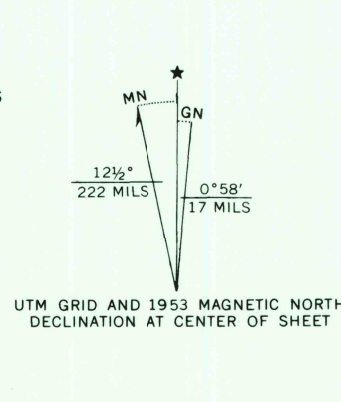
east zone, and Massachusetts (Mainland) coordinate system

1000-meter Universal Transverse Mercator grid ticks,

zone 18, shown in blue

State Park boundaries shown represent proposed

limits and not state ownership



ROAD CLASSIFICATION

Heavy-duty ——— Light-duty ———

Medium-duty ——— Unimproved dirt ———

U. S. Route ——— State Route ———

COPAKE, N.Y.-MASS.

SE/4 COPAKE 15' QUADRANGLE

N4200-W7330/7.5

1953

AMS 6268 II SE-SERIES V821

MAR 30 1984

RETURN TO:  
USGS AND HISTORICAL MAP ARCHIVES