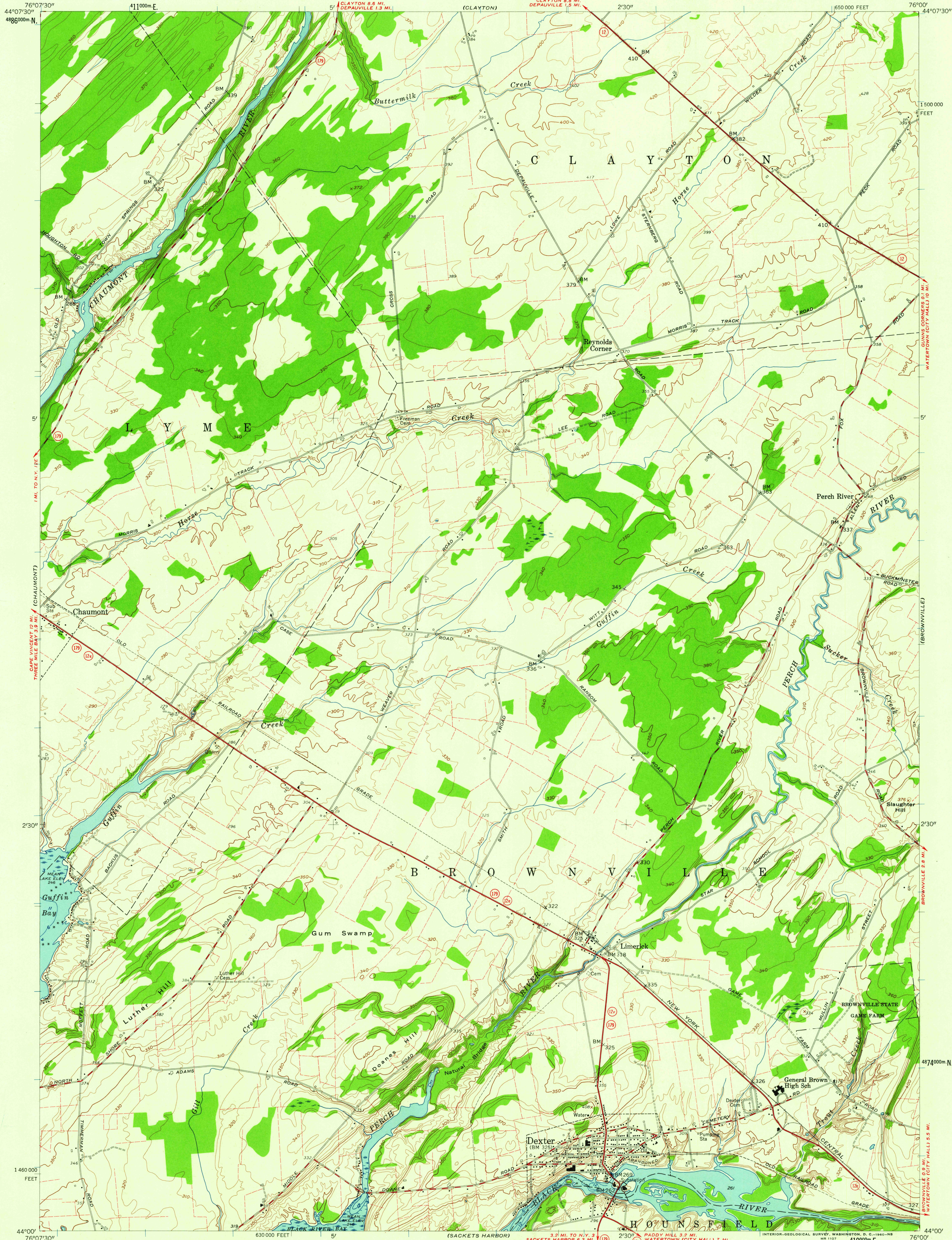


UNITED STATES
DEPARTMENT OF THE INTERIOR
GEOLOGICAL SURVEY

STATE OF NEW YORK
DEPARTMENT OF PUBLIC WORKS

DEXTER QUADRANGLE
NEW YORK-JEFFERSON CO.
7.5 MINUTE SERIES (TOPOGRAPHIC)
SE/4 CLAYTON 15' QUADRANGLE



Mapped, edited, and published by the Geological Survey

Control by USGS, TVA, and USC&GS

Topography from aerial photographs by photogrammetric methods
Aerial photographs taken 1957. Field check 1958

Hydrography compiled from U. S. Lake Survey chart 211 (1956)

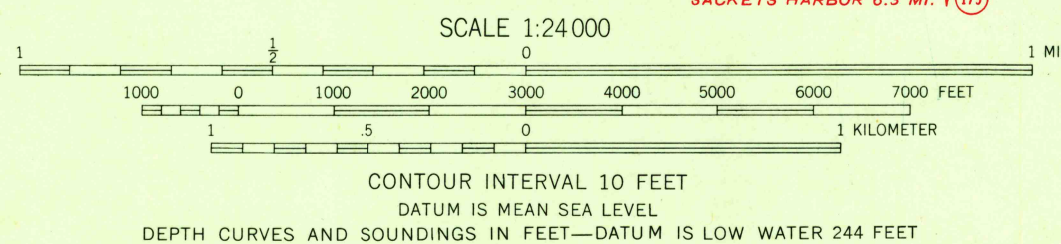
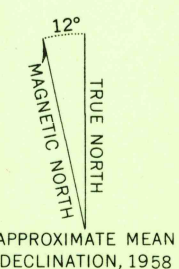
Polyconic projection. 1927 North American datum

10,000-foot grid based on New York coordinate system,
central zone

1000-meter Universal Transverse Mercator grid ticks,
zone 18, shown in blue

Fine red dashed lines indicate selected fence and field lines
visible on aerial photographs. This information is unchecked

Unchecked elevations are shown in brown



THIS MAP COMPLIES WITH NATIONAL MAP ACCURACY STANDARDS
FOR SALE BY U. S. GEOLOGICAL SURVEY, WASHINGTON 25, D. C.
A FOLDER DESCRIBING TOPOGRAPHIC MAPS AND SYMBOLS IS AVAILABLE ON REQUEST



ROAD CLASSIFICATION
Heavy-duty ——— Light-duty ———
Medium-duty ——— Unimproved dirt - - - - -
State Route ○

DEXTER, N. Y.
SE/4 CLAYTON 15' QUADRANGLE
N4400-W7600/7.5

1958

U.S.G.S.
FILE COPY
TOPOGRAPHIC DIVISION

DEC 21 1958

3075