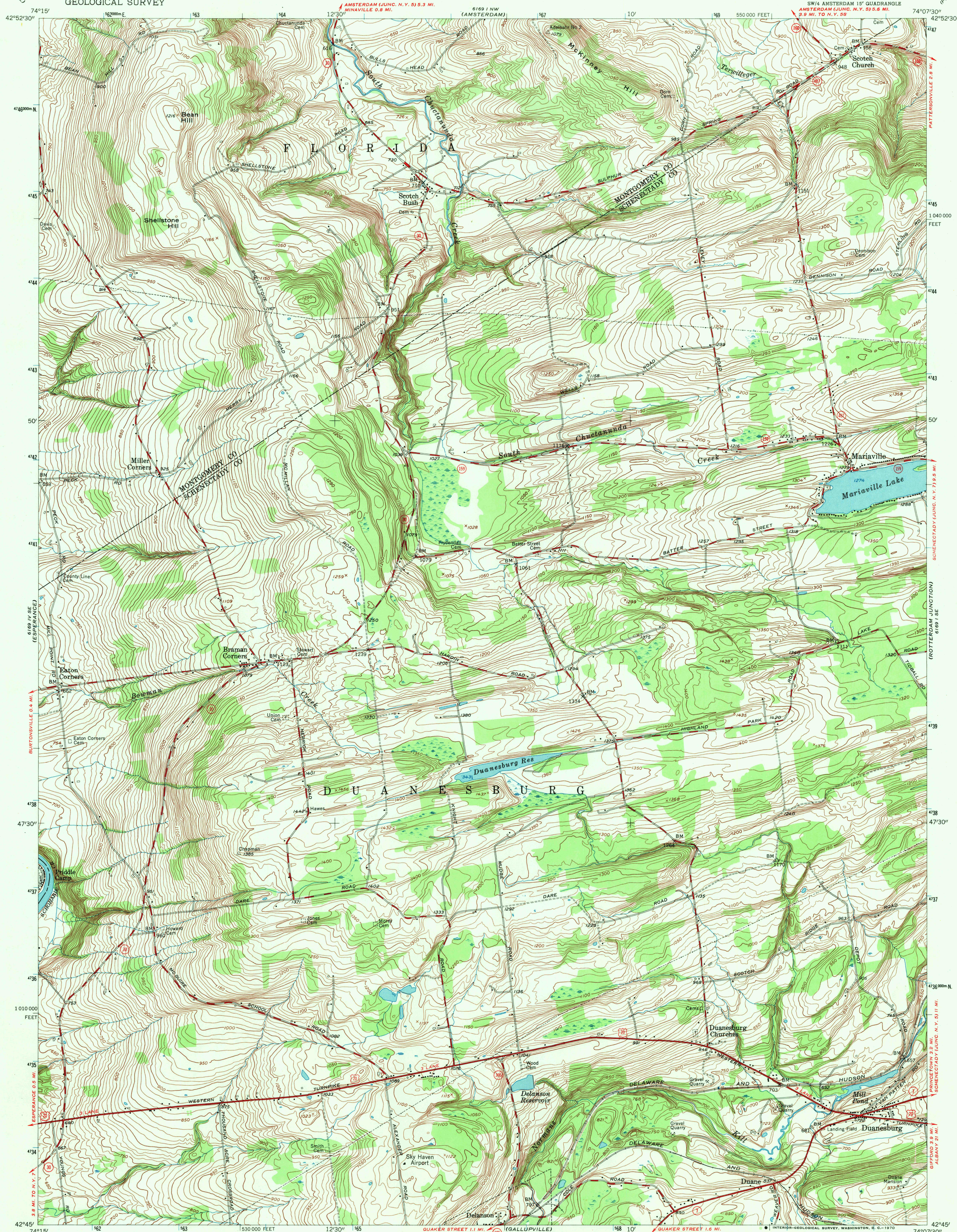


UNITED STATES
DEPARTMENT OF THE INTERIOR
GEOLOGICAL SURVEY

DUANESBURG QUADRANGLE
NEW YORK
7.5 MINUTE SERIES (TOPOGRAPHIC)
SW/4 AMSTERDAM 18' QUADRANGLE

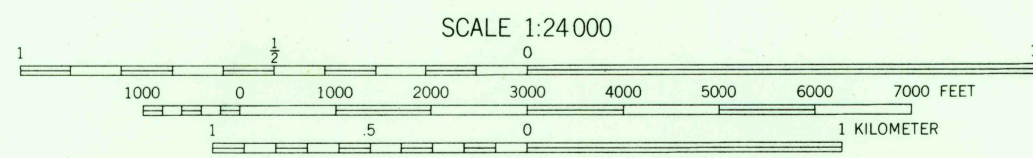
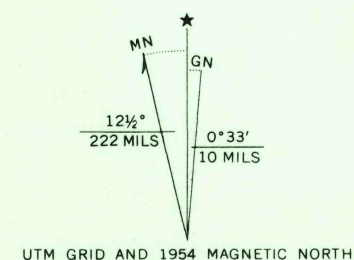


Mapped, edited, and published by the Geological Survey

Control by USGS, USC&GS, and New York State Survey
Topography from aerial photographs by stereophotogrammetric methods. Aerial photographs taken 1952. Field check 1954

Polyconic projection. 1927 North American datum
10,000-foot grid based on New York coordinate system, east zone

Unchecked elevations are shown in brown
1000-meter Universal Transverse Mercator grid ticks, zone 18, shown in blue



CONTOUR INTERVAL 10 FEET
DATUM IS MEAN SEA LEVEL

THIS MAP COMPLIES WITH NATIONAL MAP ACCURACY STANDARDS
FOR SALE BY U.S. GEOLOGICAL SURVEY, WASHINGTON, D.C. 20242
A FOLDER DESCRIBING TOPOGRAPHIC MAPS AND SYMBOLS IS AVAILABLE ON REQUEST

USGS
Historical File
Topographic Division



ROAD CLASSIFICATION
Heavy-duty ——— Light-duty ———
Medium-duty ——— Unimproved dirt ———
U.S. Route ——— State Route ———

U.S.G.S.
FILE
TOPOGRAPHIC DIVISION

DUANESBURG, N. Y.
SW/4 AMSTERDAM 18' QUADRANGLE
N 4245—W 7407.5/7.5
1954
AMS 6169 I SW—SERIES V821