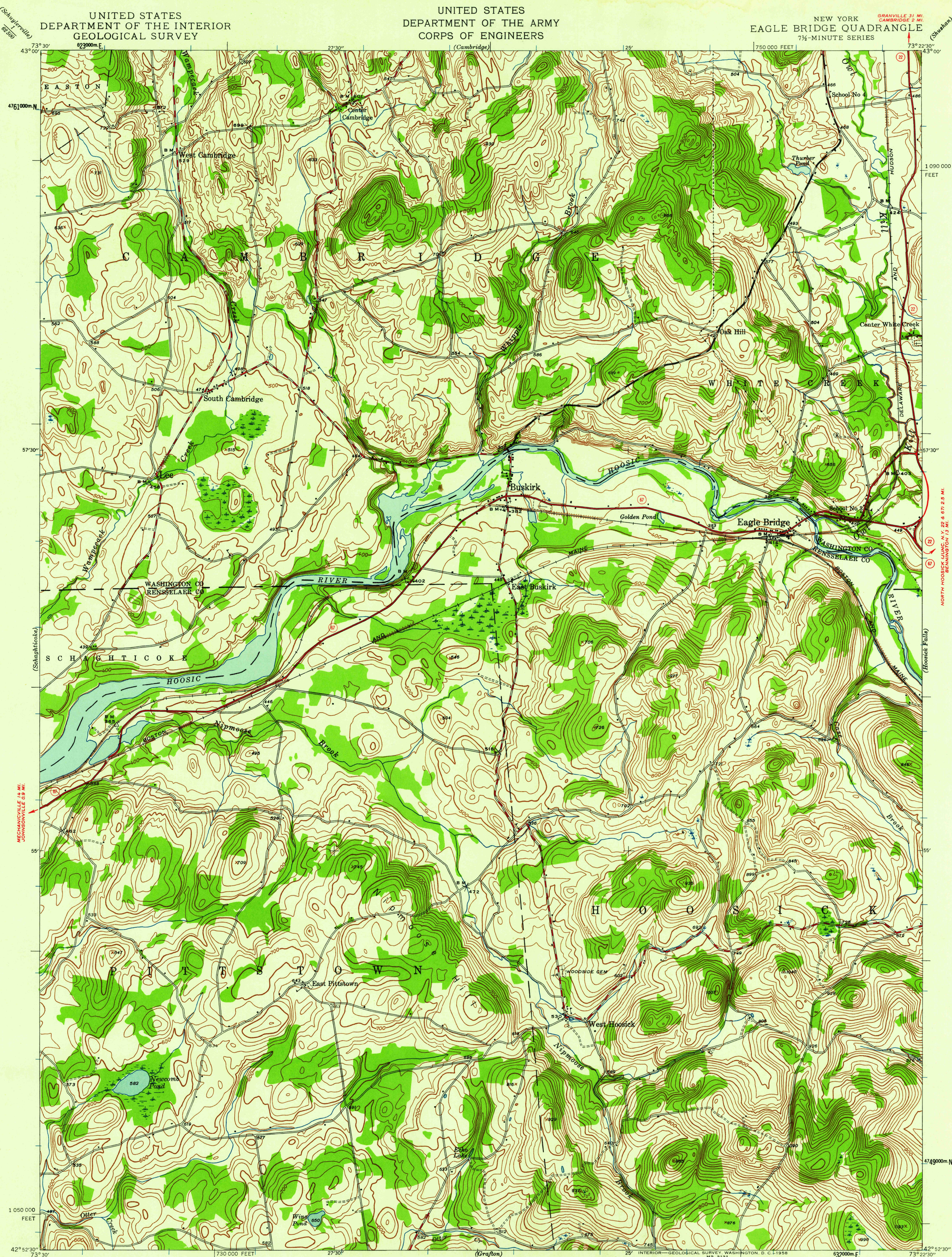


UNITED STATES
DEPARTMENT OF THE INTERIOR
GEOLOGICAL SURVEY

UNITED STATES
DEPARTMENT OF THE ARMY
CORPS OF ENGINEERS

NEW YORK
EAGLE BRIDGE QUADRANGLE
7½-MINUTE SERIES



Mapped by the Geological Survey
1944

TRUE NORTH
MAGNETIC NORTH
APPROXIMATE MEAN
DECLINATION, 1944

SCALE 1:24,000
1 000 0 1000 2000 3000 4000 5000 6000 7000 FEET
1 0 5 10 KILOMETER
CONTOUR INTERVAL 20 FEET
DATUM IS MEAN SEA LEVEL

USGS
Historical File
Topographic Division

Polyconic projection, 1927 North American datum
10,000-foot grid based on New York (East)
rectangular coordinate system
1000-meter Universal Transverse Mercator grid ticks,
zone 18, shown in blue

ROAD CLASSIFICATION
Heavy-duty ——— Light-duty ———
Medium-duty - - - - - Unimproved dirt - - - - -
○ State Route

EAGLE BRIDGE, N. Y.
N 4282.5—W 7322.5/7.5
1944

U.S.G.S.
FILE COPY
TOPOGRAPHIC DIVISION

FOR SALE BY U.S. GEOLOGICAL SURVEY, WASHINGTON 25, D. C.
A FOLDER DESCRIBING TOPOGRAPHIC MAPS AND SYMBOLS IS AVAILABLE ON REQUEST

SEP 26 1958
2455