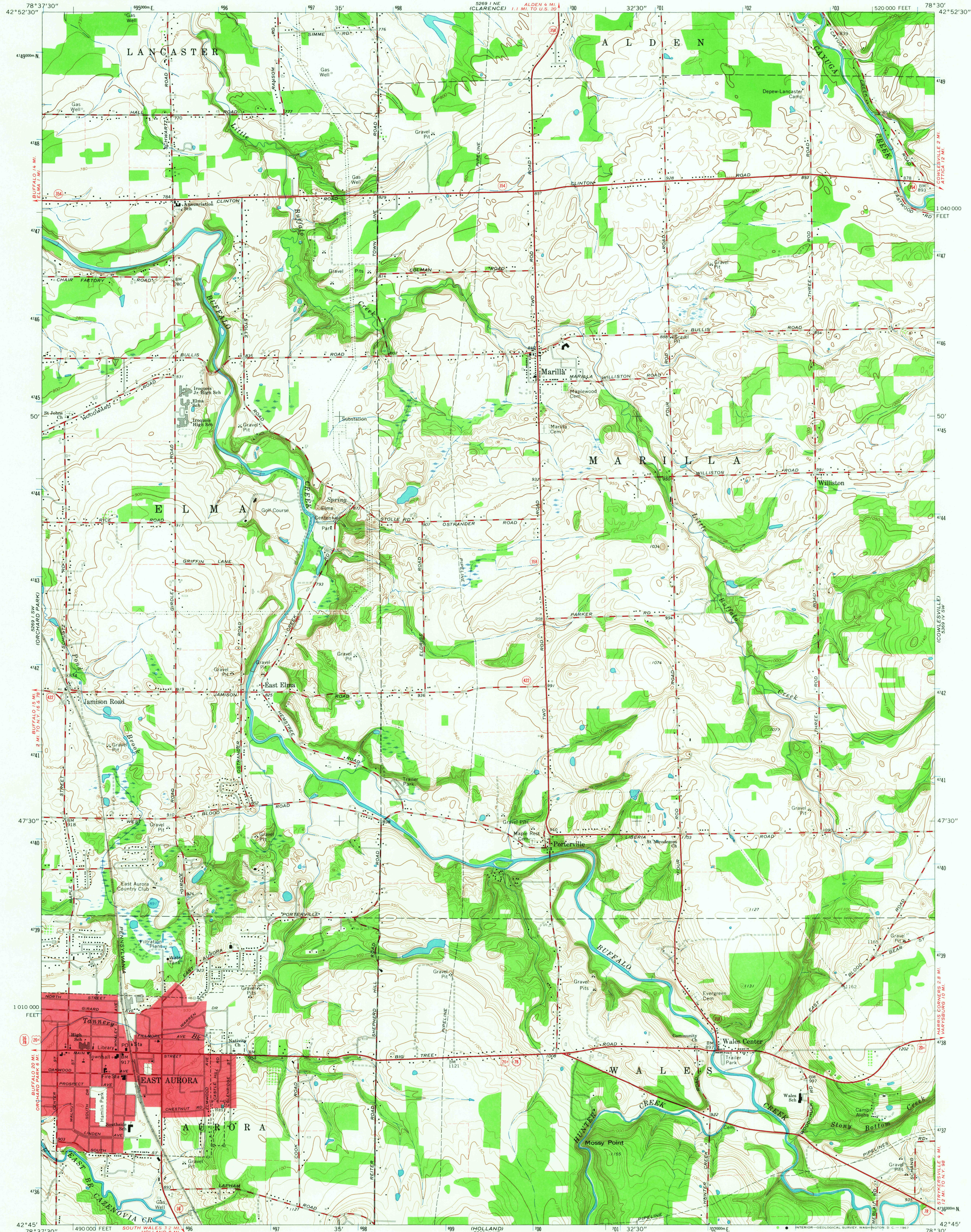


UNITED STATES  
DEPARTMENT OF THE INTERIOR  
GEOLOGICAL SURVEY

EAST AURORA QUADRANGLE  
NEW YORK-ERIE CO.  
7.5 MINUTE SERIES (TOPOGRAPHIC)  
SE/4 DEPEW 15' QUADRANGLE

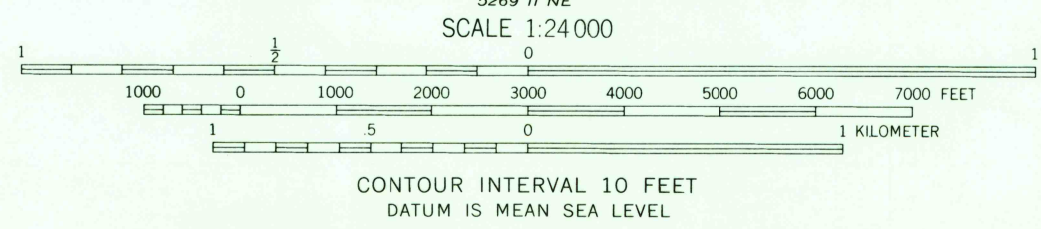
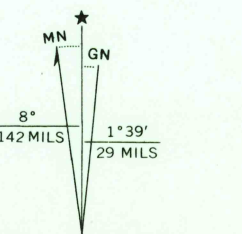


Mapped, edited, and published by the Geological Survey  
in cooperation with New York Department of Public Works  
Control by USGS, USC&GS, and USCE

Planimetry compiled by U. S. Corps of Engineers  
from aerial photographs taken 1942. Topography by  
planimetric surveys 1948. Revised from aerial photographs  
taken 1963. Field checked 1965

Polyconic projection. 1927 North American datum.  
10,000-foot grid based on New York coordinate system, west zone  
1000-meter Universal Transverse Mercator grid ticks,  
zone 17, shown in blue

Fine red dashed lines indicate selected fence and field lines where  
generally visible on aerial photographs. This information is unchecked  
Red tint indicates area in which only landmark buildings are shown



USGS  
Historical File  
Topographic Division



ROAD CLASSIFICATION  
Heavy-duty ——— Light-duty ———  
Medium-duty ——— Unimproved dirt ———  
U.S. Route ——— State Route ———

U.S.G.S. JUN 5 1967  
FILE COPY EAST AURORA, N. Y.  
TOPOGRAPHIC DIVISION 1965  
AMS 5269 I SE—SERIES V821

THIS MAP COMPLIES WITH NATIONAL MAP ACCURACY STANDARDS  
FOR SALE BY U. S. GEOLOGICAL SURVEY, WASHINGTON, D. C. 20242  
A FOLDER DESCRIBING TOPOGRAPHIC MAPS AND SYMBOLS IS AVAILABLE ON REQUEST