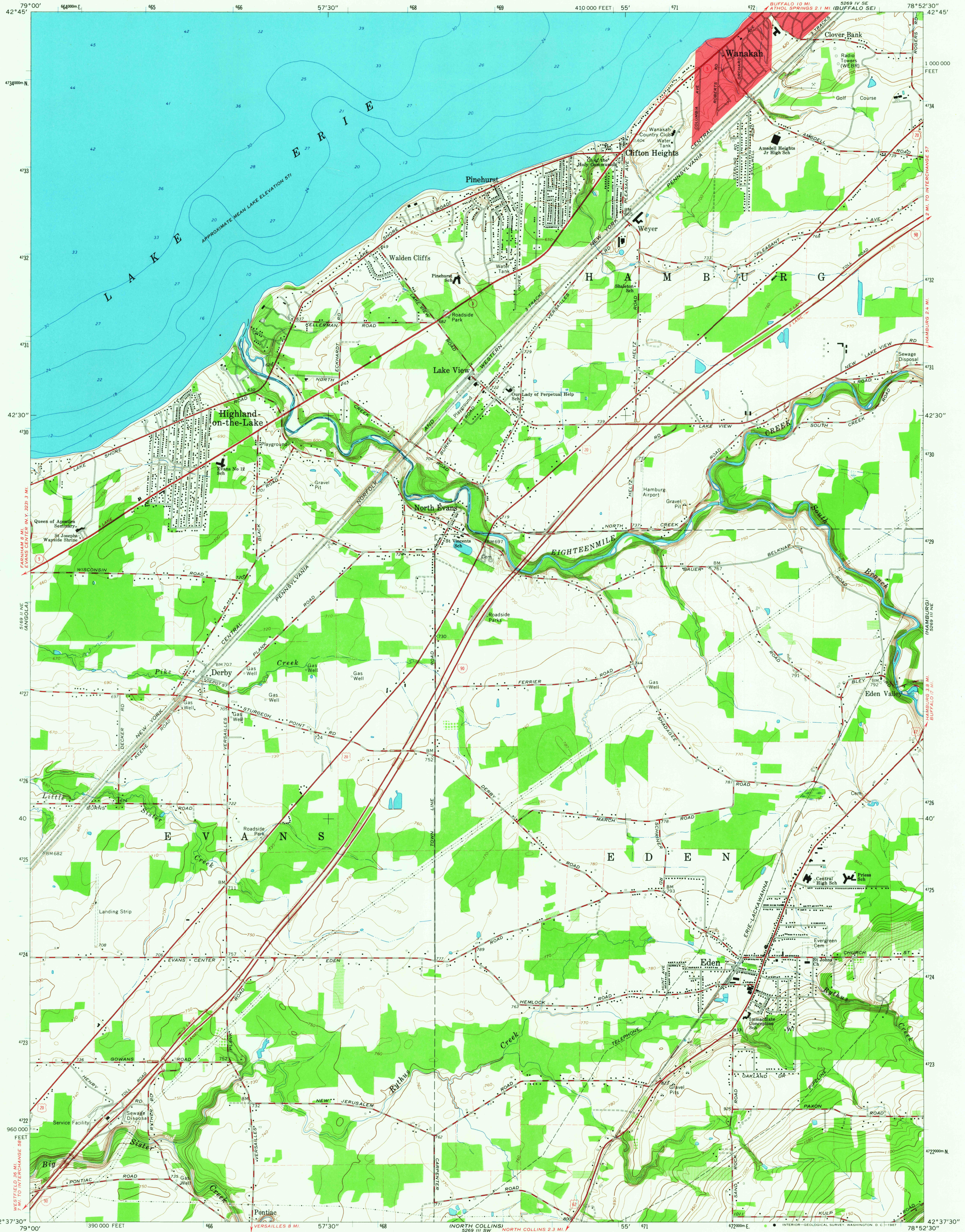


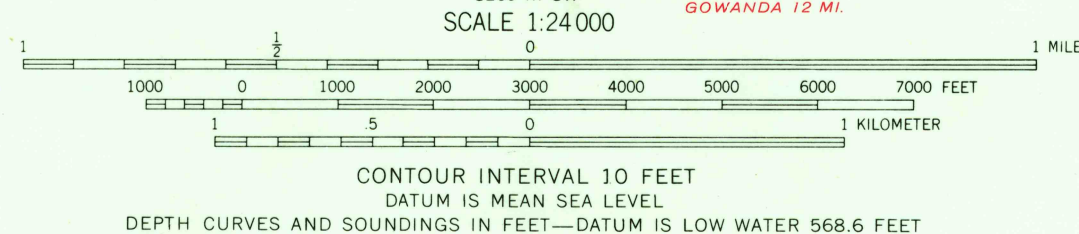
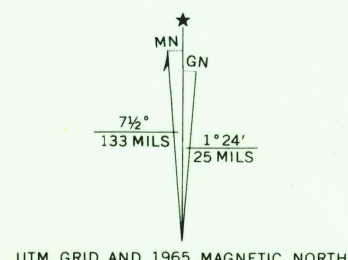
UNITED STATES
DEPARTMENT OF THE INTERIOR
GEOLOGICAL SURVEY

EDEN QUADRANGLE
NEW YORK-ERIE CO.
7.5 MINUTE SERIES (TOPOGRAPHIC)
NW/4 EDEN 15' QUADRANGLE
5269 IV SE
ATHOL SPRINGS 2.1 MI. (BUFFALO SE)

5269 IV SE
(BUFFALO SE)



Mapped, edited, and published by the Geological Survey
in cooperation with New York Department of Public Works
Control by USGS, USC&GS, and USCE
Planimetry compiled by U.S. Corps of Engineers from
aerial photographs taken 1942. Topography by
planimetric surveys 1947. Revised 1965.
Selected hydrographic data compiled from U.S. Lake Survey
Chart 31 (1965). This information is not intended
for navigational purposes.
Polyconic projection. 1927 North American datum
10,000-foot grid based on New York coordinate system, west zone
1000-meter Universal Transverse Mercator grid ticks,
zone 17, shown in blue.
Fine red dashed lines indicate selected fence and field lines where
generally visible on aerial photographs. This information is unchecked.
Red tint indicates area in which only landmark buildings are shown.



THIS MAP COMPLIES WITH NATIONAL MAP ACCURACY STANDARDS
FOR SALE BY U.S. GEOLOGICAL SURVEY, WASHINGTON, D. C. 20242
A FOLDER DESCRIBING TOPOGRAPHIC MAPS AND SYMBOLS IS AVAILABLE ON REQUEST

USGS
Historical File
Topographic Division



ROAD CLASSIFICATION
Heavy-duty ——— Light-duty ———
Medium-duty ——— Unimproved dirt ———
Int'l. Route ——— U.S. Route ——— State Route ———

EDEN, N. Y.
NW/4 EDEN 15' QUADRANGLE
N4237.5-W7852.5/7.5

1965
AMS 5269 III NW—SERIES V821

3515
JAN 24 1968