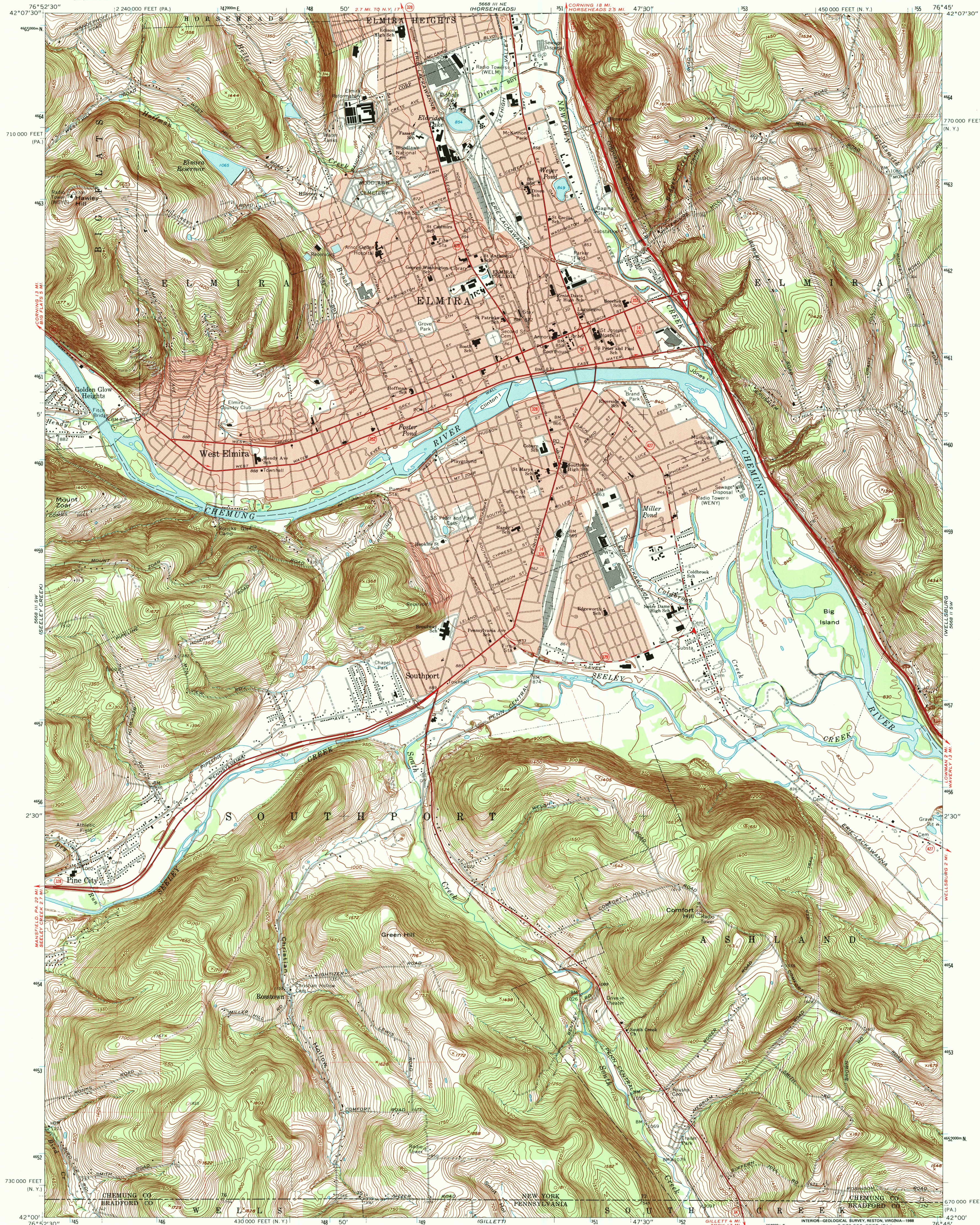


UNITED STATES  
DEPARTMENT OF THE INTERIOR  
GEOLOGICAL SURVEY

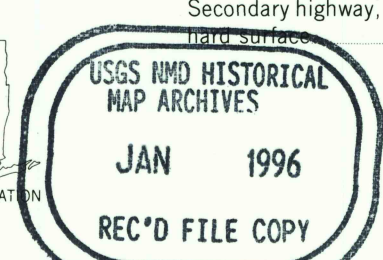
ELMIRA QUADRANGLE  
NEW YORK-PENNSYLVANIA  
7.5 MINUTE SERIES (TOPOGRAPHIC)  
SE/4 ELMIRA 15' QUADRANGLE



Mapped, edited, and published by the Geological Survey  
Revised in cooperation with New York Department of Transportation  
Control by USGS and USC&GS  
Topography by photogrammetric methods from aerial  
photographs taken 1948. Field checked 1953. Revised  
from aerial photographs taken 1968. Field checked 1969  
Polyconic projection. 1927 North American datum  
10,000-foot grids based on New York coordinate system,  
central zone, and Pennsylvania coordinate system, north zone  
1000-meter Universal Transverse Mercator grid ticks,  
zone 18, shown in blue  
Fine red dashed lines indicate selected fence and field lines where  
generally visible on aerial photographs. This information is unchecked  
Red tint indicates areas in which only landmark buildings are shown

SCALE 1:24,000  
CONTOUR INTERVAL 10 FEET  
NATIONAL GEODETIC VERTICAL DATUM OF 1929

ROAD CLASSIFICATION  
Primary highway, all weather, hard surface  
Secondary highway, all weather, improved surface  
Unimproved road, fair or dry weather  
State Route



ELMIRA, N. Y. - PA.  
SE/4 ELMIRA 15' QUADRANGLE  
42076-A7-TF-024

1969  
DMA 5668 III SE-SERIES V821

THIS MAP COMPLIES WITH NATIONAL MAP ACCURACY STANDARDS  
FOR SALE BY U. S. GEOLOGICAL SURVEY, DENVER, COLORADO 80226, OR RESTON, VIRGINIA 22092  
A FOLDER DESCRIBING TOPOGRAPHIC MAPS AND SYMBOLS IS AVAILABLE ON REQUEST

To place on the predicted North American datum 1983  
move the projection lines 4 meters south and  
26 meters west as shown by dashed corner ticks

