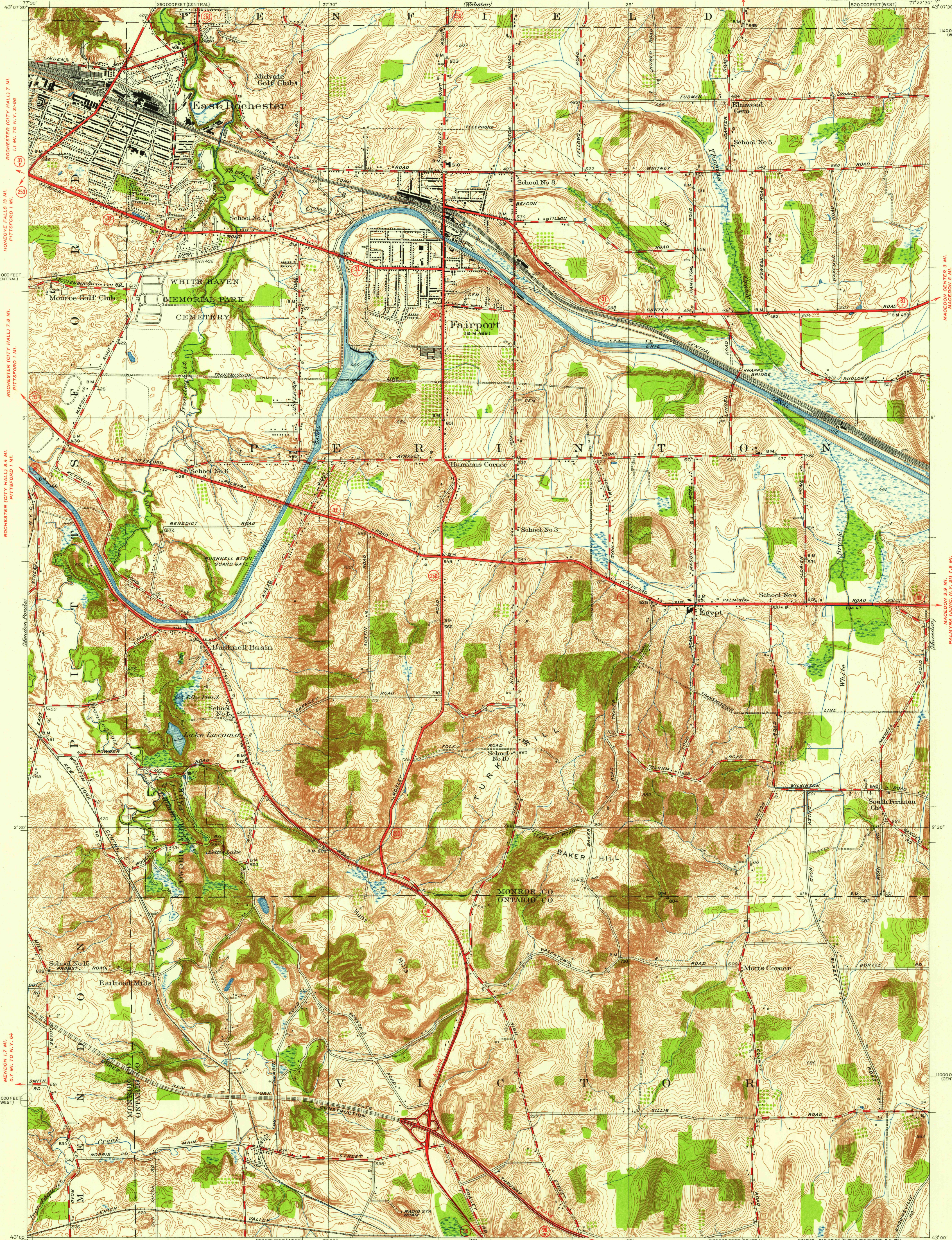


UNITED STATES  
DEPARTMENT OF THE INTERIOR  
GEOLOGICAL SURVEY

MONROE COUNTY, NEW YORK  
REGIONAL PLANNING BOARD  
(Webster)

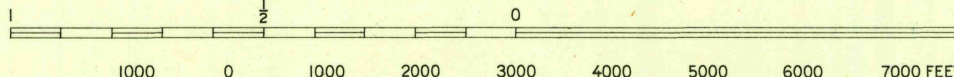
NEW YORK  
(MONROE COUNTY)  
FAIRPORT QUADRANGLE  
(820000 FEET WEST) 77°22'30"



FILE COPY  
Monroe County, New York

FILE COPY  
Monroe County, New York

SCALE 1:24,000



CONTOUR INTERVAL 5 FEET  
DATUM IS MEAN SEA LEVEL

FOR SALE BY U.S. GEOLOGICAL SURVEY, WASHINGTON 25, D. C.  
A FOLDER DESCRIBING TOPOGRAPHIC MAPS AND SYMBOLS IS AVAILABLE ON REQUEST

USGS  
Historical File  
Topographic Division

ROAD CLASSIFICATION

Heavy-duty ——— 4 LANE 6 LANE Light-duty ———  
Medium-duty ——— 4 LANE 6 LANE Unimproved dirt ———  
U.S. Route ——— State Route ———

FAIRPORT N.Y.  
N4300-W7722.5/7.5

1952

JUN 25 1954