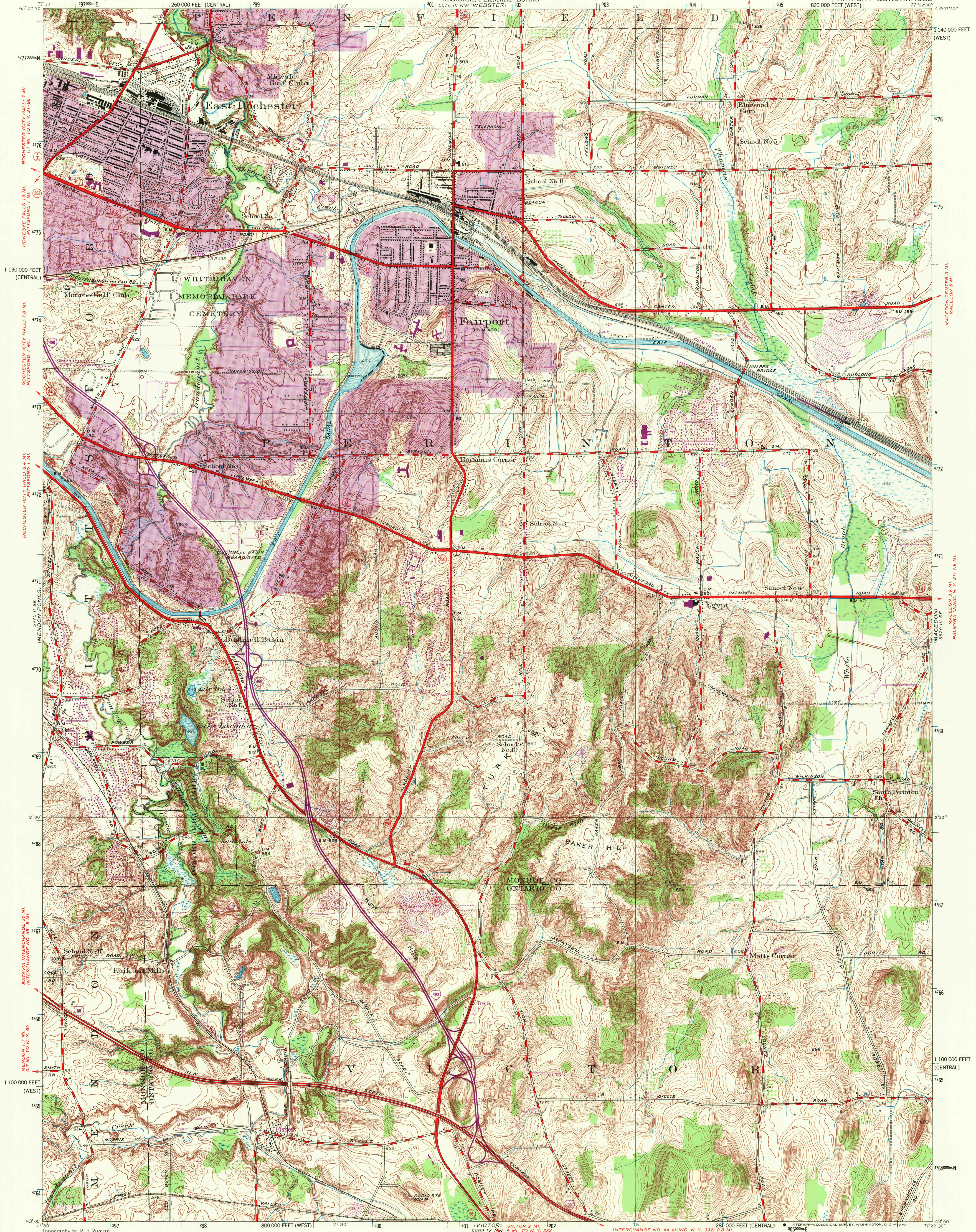


UNITED STATES  
DEPARTMENT OF THE INTERIOR  
GEOLOGICAL SURVEY

MONROE COUNTY, NEW YORK  
REGIONAL PLANNING BOARD

NEW YORK  
(MONROE COUNTY)  
FAIRPORT QUADRANGLE



Topography by R. H. Runyan  
Culture and drainage in part compiled from aerial photographs  
Control by U. S. Geological Survey, and U. S. Coast and Geodetic Survey  
and U. S. Lake Survey  
Surveyed in 1932. Revised in 1952  
Polyconic projection. 1927 North American datum  
10,000 foot grids based on New York coordinate system,  
west and central zones  
1000 meter Universal Transverse Mercator grid ticks,  
zone 18, shown in blue  
Revisions shown in purple compiled from aerial photographs taken  
1969. This information not field checked  
Purple tint indicates extension of urban areas

UTM GRID AND 1969 MAGNETIC NORTH  
DECLINATION AT CENTER OF SHEET

SCALE 1:24,000  
CONTOUR INTERVAL 5 FEET  
DATUM IS MEAN SEA LEVEL  
FOR SALE BY U. S. GEOLOGICAL SURVEY, WASHINGTON, D. C. 20242  
A FOLDER DESCRIBING TOPOGRAPHIC MAPS AND SYMBOLS IS AVAILABLE ON REQUEST

USGS  
Historical File  
Topographic Division  
NEW YORK

ROAD CLASSIFICATION  
Heavy-duty ——— Light-duty ———  
Medium-duty ——— Unimproved dirt ———  
Interstate Route U. S. Route State Route

U.S.G.S.  
FILE COPY  
TOPOGRAPHIC DIVISION  
1952  
PHOTOREVISED 1969  
N 5570 III SW—SERIES V821

5065  
AUG 1 9 1970