

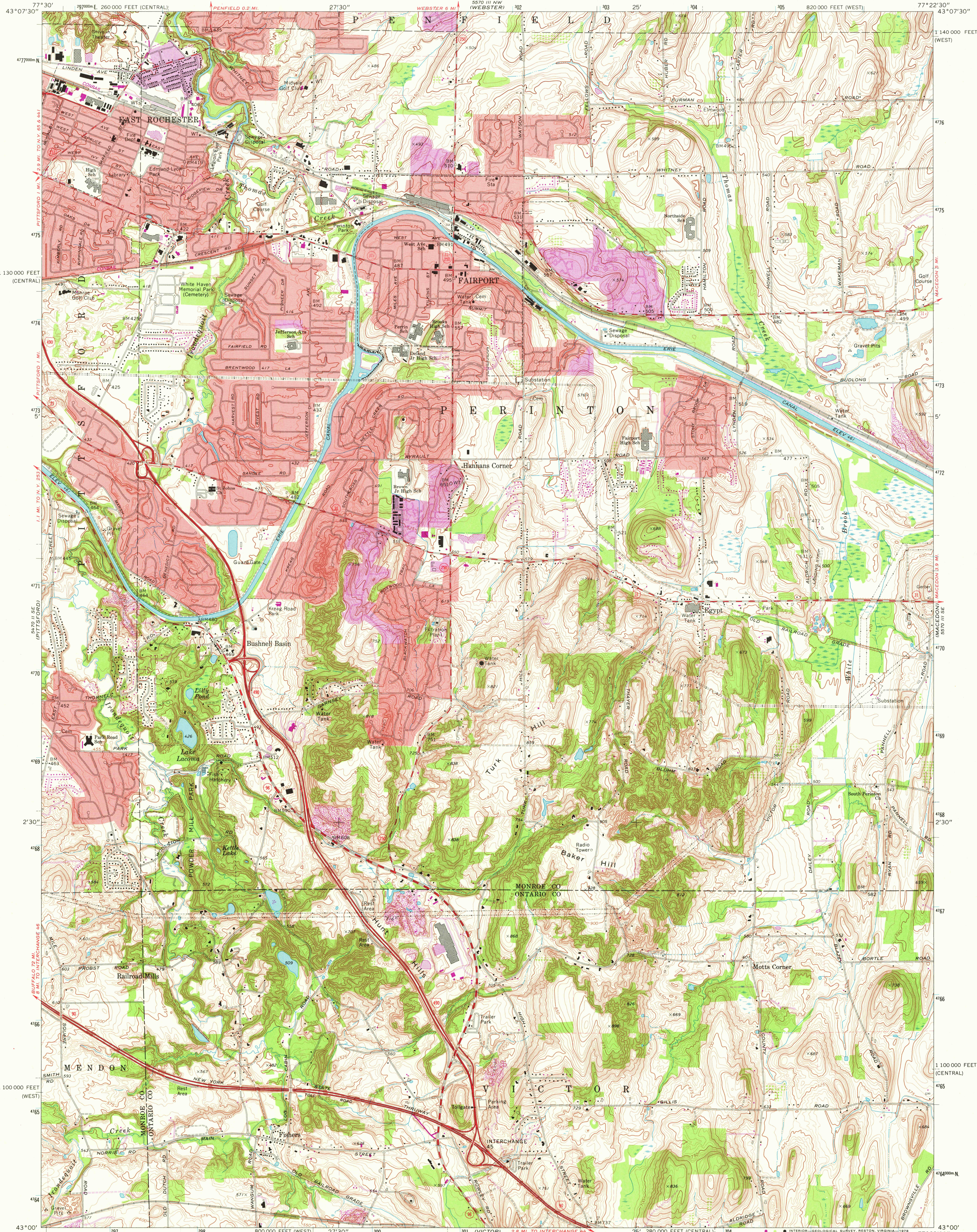
UNITED STATES
DEPARTMENT OF THE INTERIOR
GEOLOGICAL SURVEY



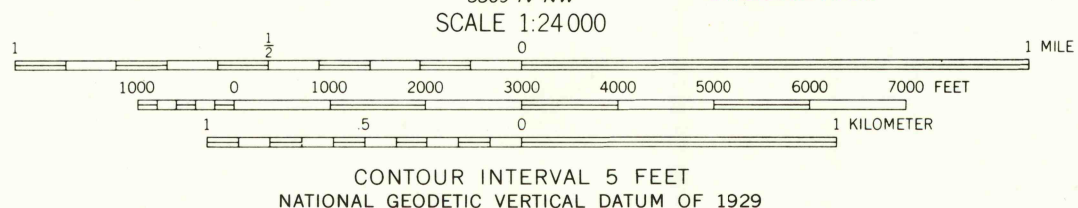
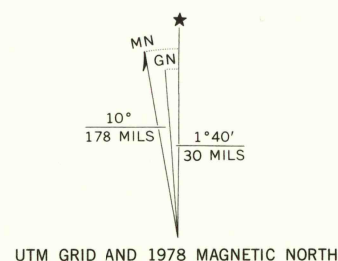
STATE OF NEW YORK
DEPARTMENT OF TRANSPORTATION

FAIRPORT QUADRANGLE
NEW YORK
7.5 MINUTE SERIES (TOPOGRAPHIC)

55° 11' 15" N
77° 22' 30" W



Mapped, edited, and published by the Geological Survey
Control by USGS, USC&GS, and New York Geodetic Survey
Topography by photogrammetric methods from aerial
photographs taken 1971. Field checked 1971.
Supersedes map dated 1952
Projection: New York coordinate system, west zone
(transverse Mercator)
10,000-foot grid ticks based on New York coordinate system,
west and central zones
1000-meter Universal Transverse Mercator grid ticks,
zone 18, shown in blue. 1927 North American datum
Fine red dashed lines indicate selected fence and field lines where
generally visible on aerial photographs. This information is unchecked
Red tint indicates areas in which only landmark buildings are shown



THIS MAP COMPLIES WITH NATIONAL MAP ACCURACY STANDARDS
FOR SALE BY U. S. GEOLOGICAL SURVEY, RESTON, VIRGINIA 22092
A FOLDER DESCRIBING TOPOGRAPHIC MAPS AND SYMBOLS IS AVAILABLE ON REQUEST

ROAD CLASSIFICATION

Primary highway, hard surface	Light-duty road, hard or improved surface
Secondary highway, hard surface	Unimproved road

Interstate Route U. S. Route State Route

USGS
Historical File
Topographic Division

FAIRPORT, N. Y.
N4300-W7722.5/7.5

1971
PHOTOREVISED 1978
AMS 5570 III SW-SERIES V821

5700

APR 10 1978