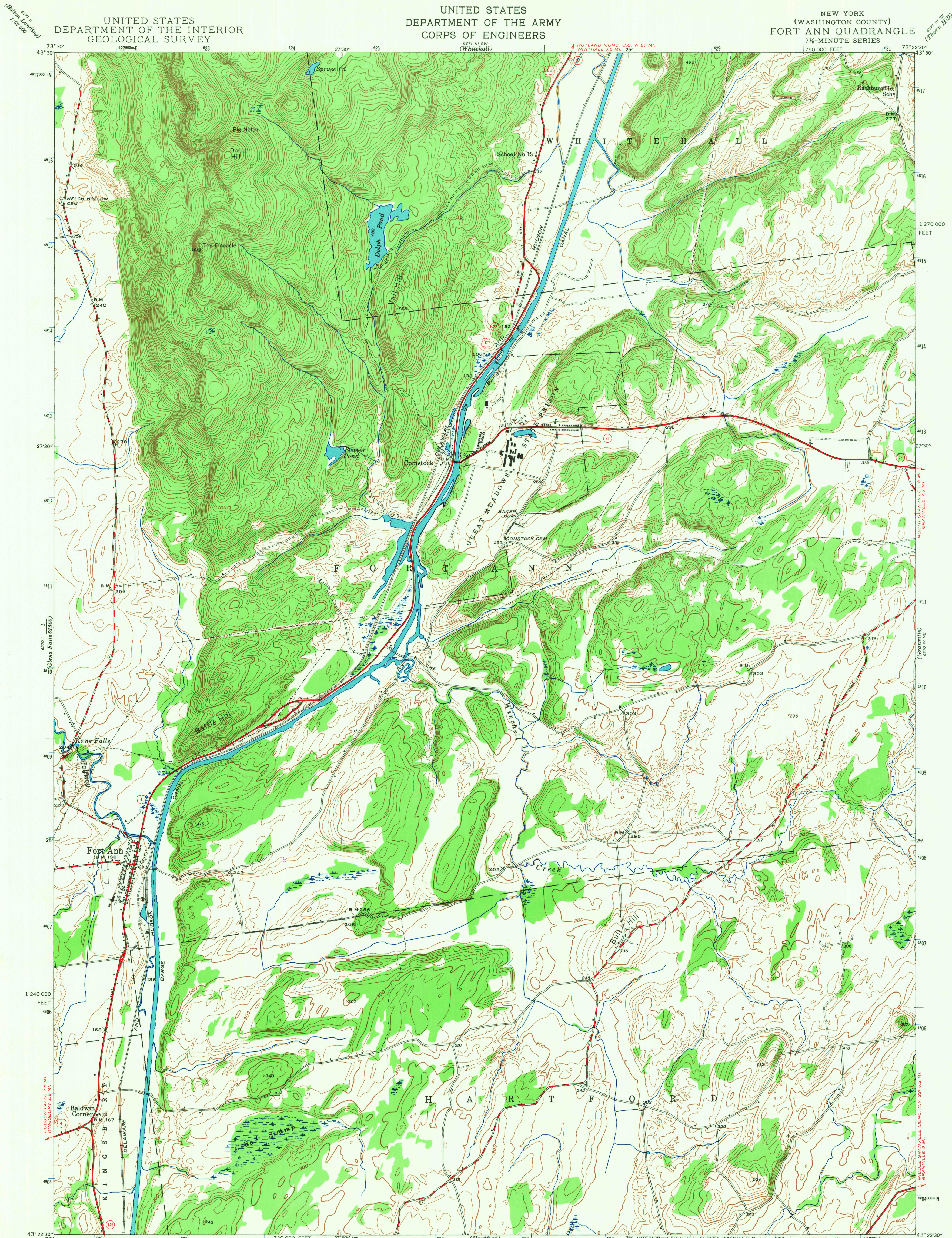


UNITED STATES
DEPARTMENT OF THE INTERIOR
GEOLOGICAL SURVEY

UNITED STATES
DEPARTMENT OF THE ARMY
CORPS OF ENGINEERS

NEW YORK
(WASHINGTON COUNTY)
FORT ANN QUADRANGLE
7 1/2-MINUTE SERIES



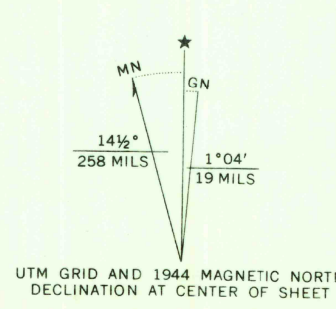
Mapped by the Geological Survey
1944

SMITHS BASIN 1.2 MI.
HARTFORD 7.5 MI.

ROAD CLASSIFICATION

Heavy-duty Light-duty
Medium-duty Unimproved dirt

U. S. Route State Route



CONTOUR INTERVAL 20 FEET
DATUM IS MEAN SEA LEVEL

FOR SALE BY U. S. GEOLOGICAL SURVEY, WASHINGTON, D. C. 20242
A FOLDER DESCRIBING TOPOGRAPHIC MAPS AND SYMBOLS IS AVAILABLE ON REQUEST

U.S.G.S.
FILE COPY
TOPOGRAPHIC DIVISION

Polyconic projection. 1927 North American datum
10,000-foot grid based on New York (East)
rectangular coordinate system
1000-meter Universal Transverse Mercator grid ticks,
zone 18, shown in blue

FORT ANN, N. Y.
N 4322.5-W 7322.5/7.5

1944

AMS 6370 IV NW-SERIES V821

2555
APR 16 1968