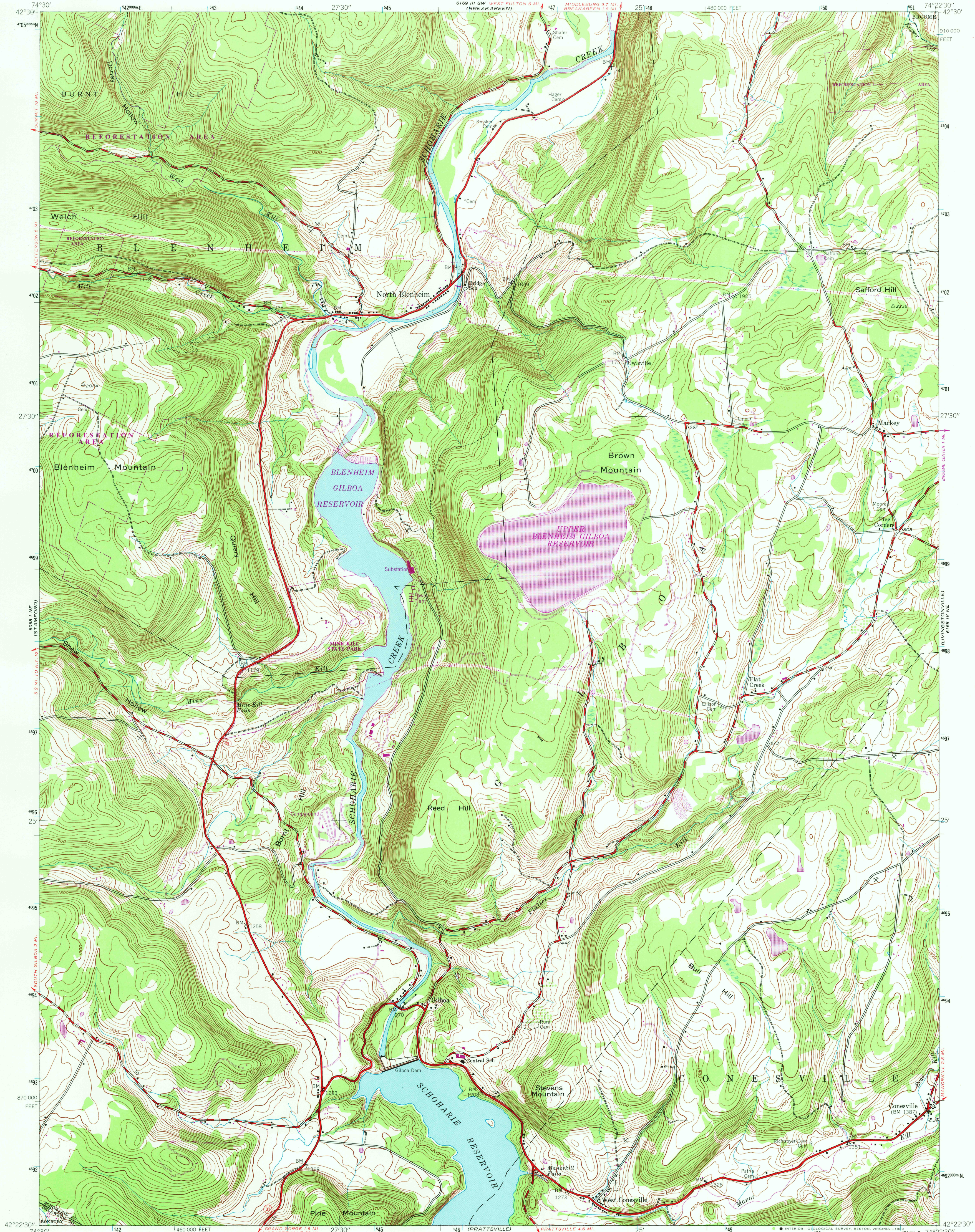


UNITED STATES
DEPARTMENT OF THE INTERIOR
GEOLOGICAL SURVEY

GILBOA QUADRANGLE
NEW YORK
7.5 MINUTE SERIES (TOPOGRAPHIC)



Mapped by the Army Map Service
Published for civil use by the Geological Survey

Control by NOS/NOAA, and TVA

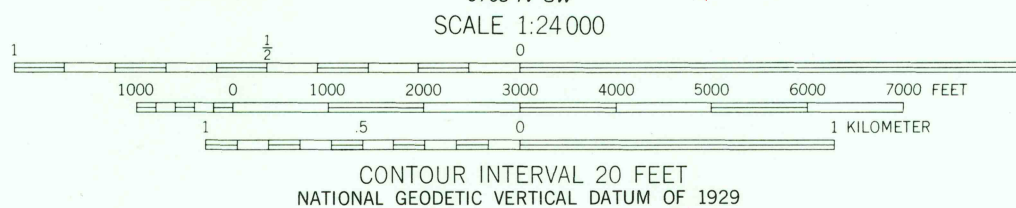
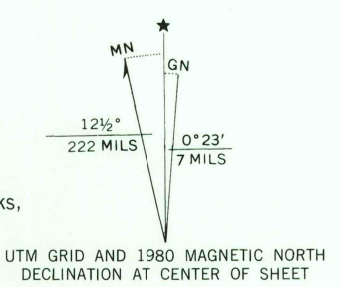
Topography by photogrammetric methods from aerial
photographs taken 1941 and 1943. Field checked 1945

Polyconic projection. 10,000-foot grid based on New York coordinate
system, east zone. 1000-meter Universal Transverse Mercator grid ticks,
zone 18, shown in blue. 1927 North American Datum. To place on
the predicted North American Datum 1983 move the projection lines
5 meters south and 33 meters west as shown by dashed corner ticks

There may be private inholdings within the boundaries
of the National or State reservations shown on this map

Revisions shown in purple and woodland compiled by the Geological
Survey from aerial photographs taken 1979 and other source data

This information not field checked. Map edited 1980



ROAD CLASSIFICATION
Heavy-duty ——— Light-duty ———
Medium-duty ——— Unimproved dirt ———
State Route ———



GILBOA, N. Y.

N4222.5-W7422.5/7.5

1945
PHOTOREVISED 1980
DMA 6168 IV NW-SERIES V821

FEB 3 1981
2786