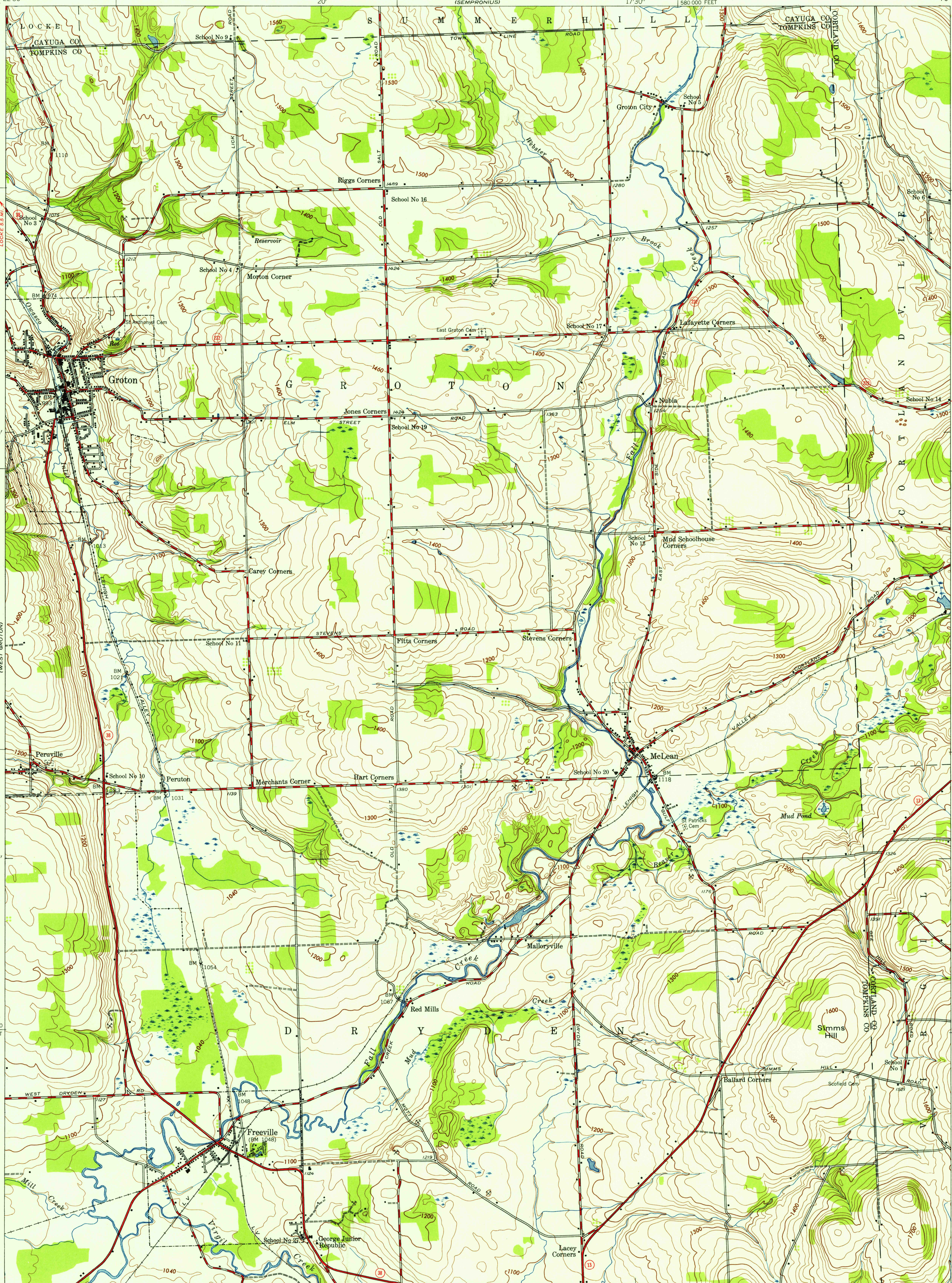
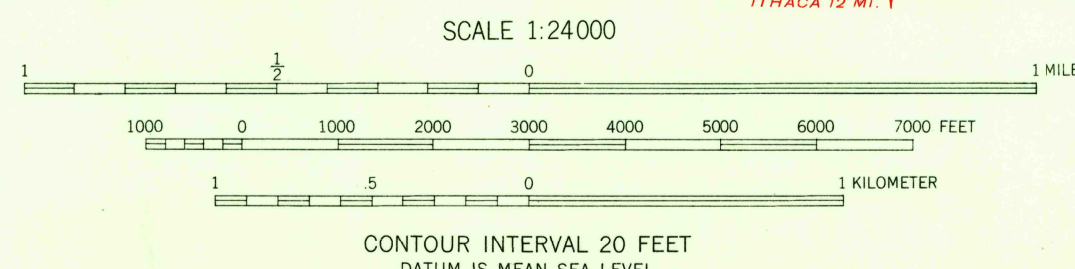
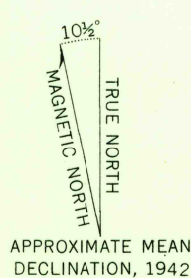


U.S.G.S.
FILE COPY
TOPOGRAPHIC DIVISION



Mapped by the Army Map Service
Published for civil use by the Geological Survey
Control by USC&GS and TVA
Topography from aerial photographs by multiplex methods
Aerial photographs taken 1942. Field check 1942
Polyconic projection. 1927 North American datum
10,000-foot grid based on New York coordinate system,
central zone



USGS
Historical File
Topographic Division

ROAD CLASSIFICATION
Heavy-duty 4 LANE 16 LANE Light-duty
Medium-duty 4 LANE 16 LANE Unimproved dirt
U. S. Route State Route



GROTON, N. Y.
SE/4 MORAVIA 15' QUADRANGLE
N4230-W7615/7.5

U.S.G.S.
FILE COPY
TOPOGRAPHIC DIVISION

1942

MAR 8 1956

1640