

UNITED STATES
DEPARTMENT OF THE INTERIOR
GEOLOGICAL SURVEY

GULF SUMMIT QUADRANGLE
NEW YORK-BROOME CO.
7.5 MINUTE SERIES (TOPOGRAPHIC)

5868 II SE
NORTH SANFORD

75°37'30"
42°07'30"

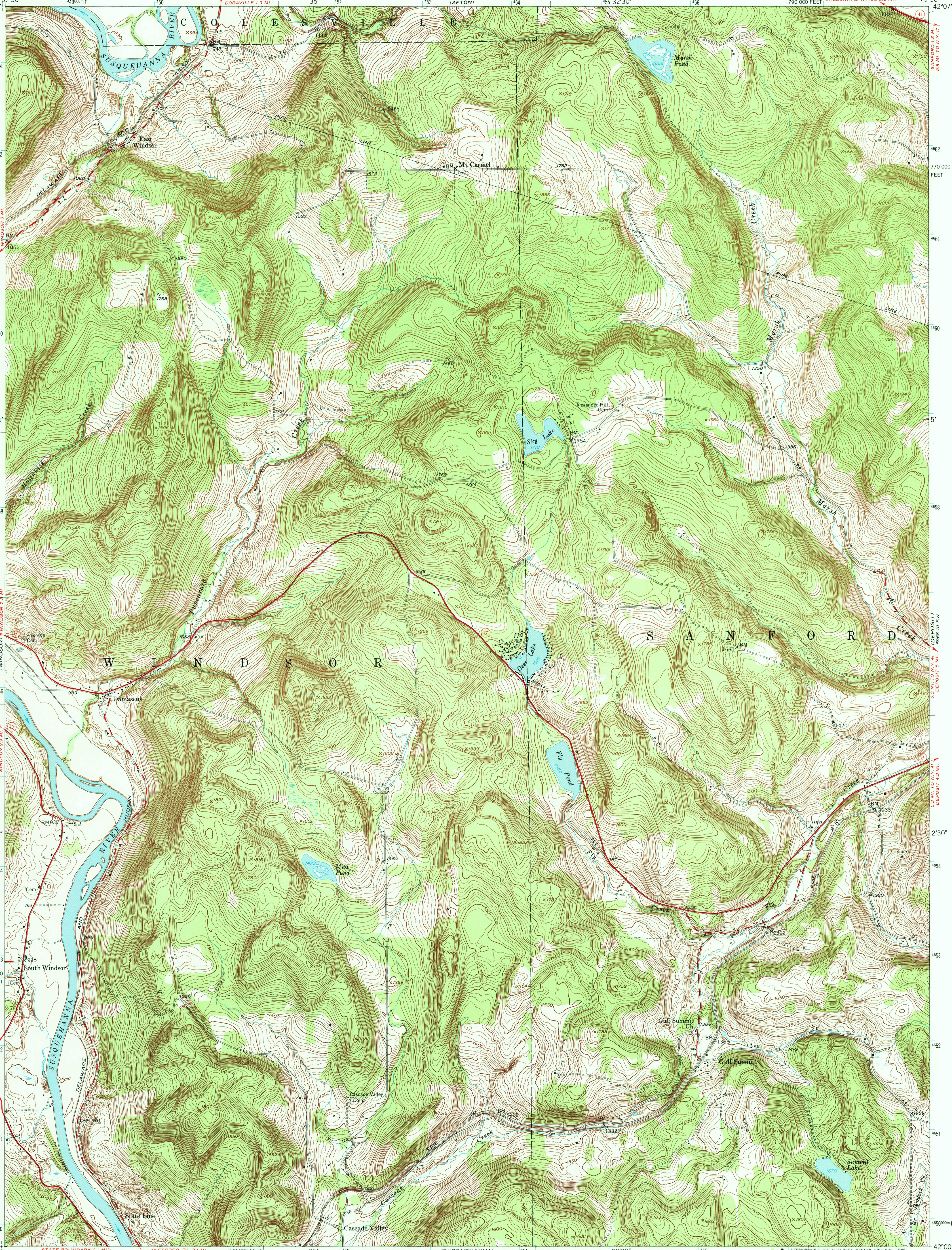
5868 II SE
BINGHAMTON 18 MI.

5868 II SE
BINGHAMTON 18 MI.

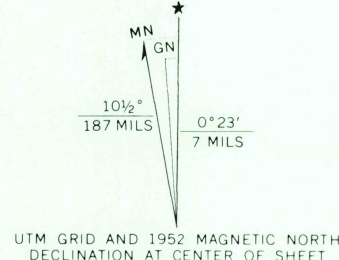
5868 II SE
BINGHAMTON 18 MI.

5868 II SE
BINGHAMTON 18 MI.

5868 II SE
BINGHAMTON 18 MI.



Mapped, edited, and published by the Geological Survey
Control by USGS, USCGS and USCE
Topography from aerial photographs by multiple methods
Aerial photographs taken 1948. Field check 1952
Polyconic projection. 1927 North American datum
10,000-foot grid based on New York coordinate system,
central zone
1000-metre Universal Transverse Mercator grid ticks,
zone 18, shown in blue
To place on the predicted North American Datum 1983
move the projection lines 4 meters south and
30 meters west as shown by dashed corner ticks



CONTOUR INTERVAL 10 FEET
NATIONAL GEODETIC VERTICAL DATUM OF 1929

THIS MAP COMPLIES WITH NATIONAL MAP ACCURACY STANDARDS
FOR SALE BY U.S. GEOLOGICAL SURVEY
DENVER, COLORADO 80225, OR RESTON, VIRGINIA 22092
A FOLDER DESCRIBING TOPOGRAPHIC MAPS AND SYMBOLS IS AVAILABLE ON REQUEST



ROAD CLASSIFICATION
Heavy-duty ——— LANE 16 LANE Light-duty ———
Medium-duty ——— LANE 6 LANE Unimproved dirt =====
U.S. Route ——— State Route ———

GULF SUMMIT, N.Y.

42075-A5-TF-024

1952

DMA 5868 II SE—SERIES V821

USGS NHD HISTORICAL MAP

SEP 22 1988

REC'D FILE COPY