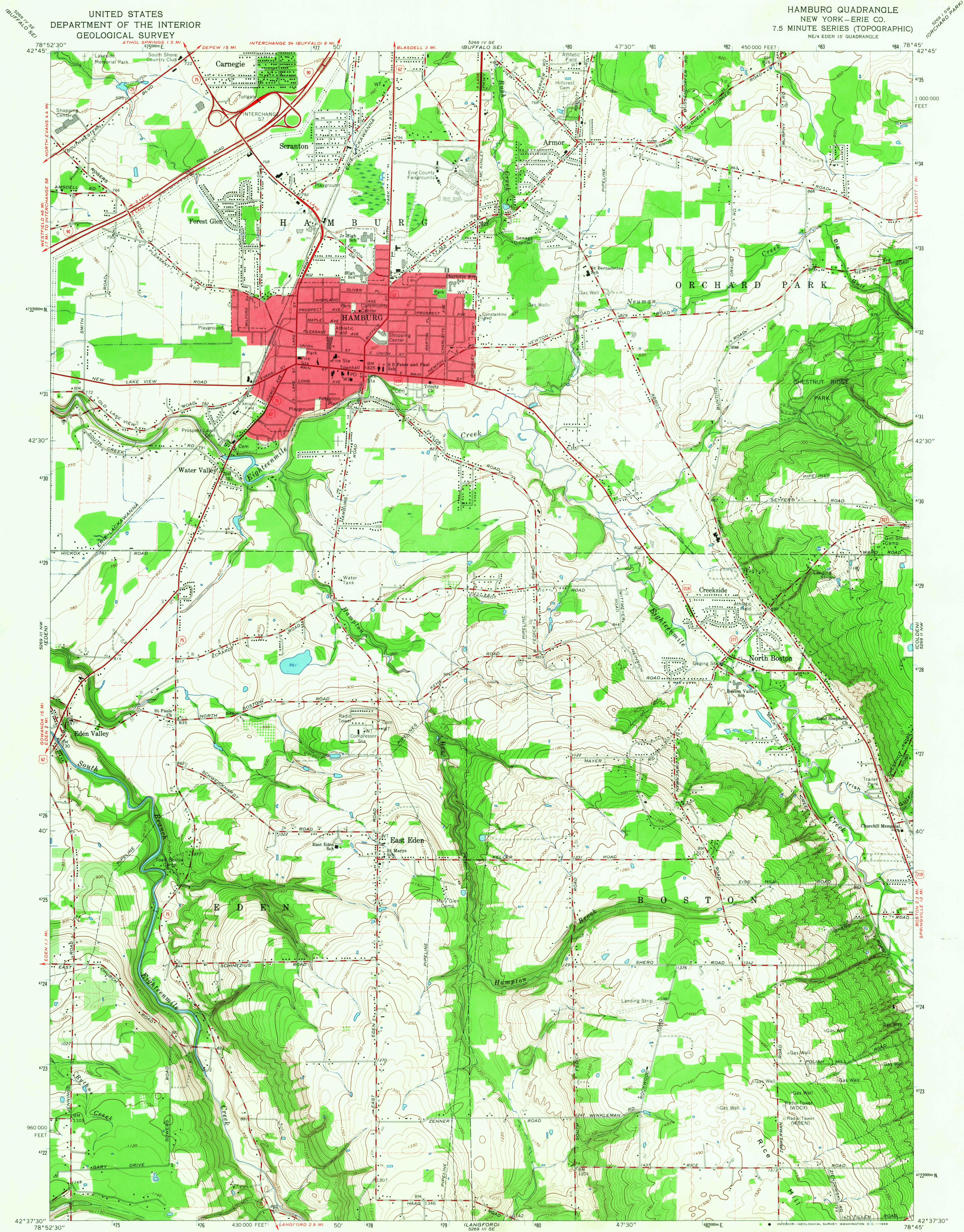


UNITED STATES  
DEPARTMENT OF THE INTERIOR  
GEOLOGICAL SURVEY

HAMBURG QUADRANGLE  
NEW YORK-ERIE CO.  
7.5 MINUTE SERIES (TOPOGRAPHIC)  
NE 1/4 EDEN 15' QUADRANGLE



Mapped, edited, and published by the Geological Survey  
in cooperation with New York Department of Public Works

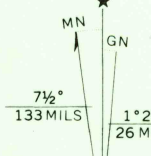
Control by USGS, USC&GS, and USCE

Planimetry compiled by U.S. Corps of Engineers from  
aerial photographs taken 1942. Topography by  
planimetric surveys 1947. Revised 1965

Polyconic projection. 1927 North American datum  
10,000-foot grid based on New York coordinate system, west zone  
1000-meter Universal Transverse Mercator grid ticks,  
zone 17, shown in blue

Fine red dashed lines indicate selected fence and field lines where  
generally visible on aerial photographs. This information is unchecked

Red tint indicates area in which only landmark buildings are shown



SCALE 1:24,000

CONTOUR INTERVAL 10 FEET  
DATUM IS MEAN SEA LEVEL

USGS  
Historical File  
Topographic Division

ROAD CLASSIFICATION  
Heavy-duty ——— Light-duty ———  
Medium-duty ——— Unimproved dirt ———  
Interstate Route U.S. Route State Route



U.S.G.S.  
FILE COPY  
TOPOGRAPHIC DIVISION

HAMBURG, N. Y.  
NE 1/4 EDEN 15' QUADRANGLE  
N4237.5-W7845/7.5

1965

AMS 5269 III NE-SERIES V821

THIS MAP COMPLIES WITH NATIONAL MAP ACCURACY STANDARDS  
FOR SALE BY U.S. GEOLOGICAL SURVEY, WASHINGTON, D. C. 20242  
A FOLDER DESCRIBING TOPOGRAPHIC MAPS AND SYMBOLS IS AVAILABLE ON REQUEST

3290  
AUG 6 1968