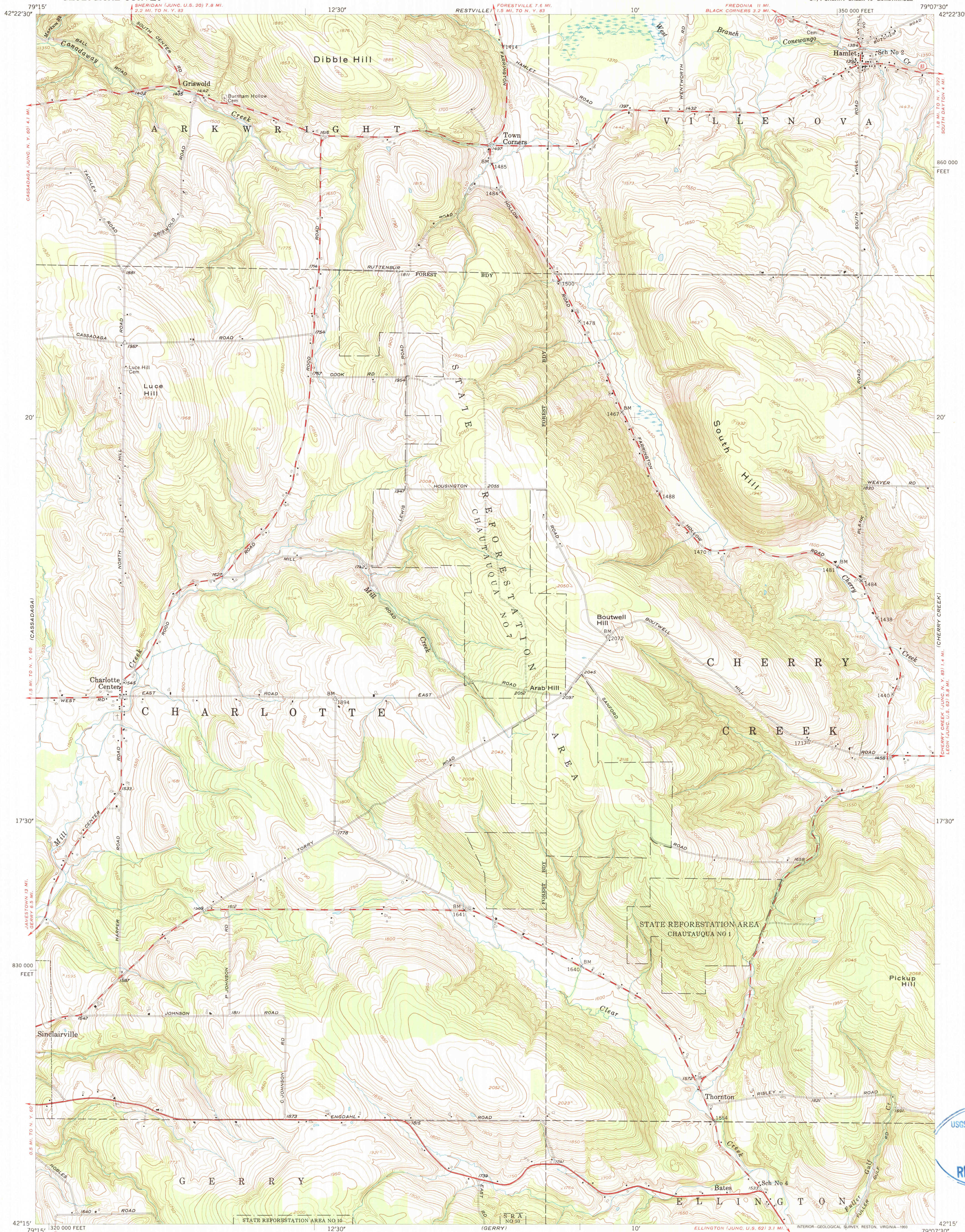


UNITED STATES  
DEPARTMENT OF THE INTERIOR  
GEOLOGICAL SURVEY

HAMLET QUADRANGLE  
NEW YORK-CHAUTAUQUA CO.  
7.5 MINUTE SERIES (TOPOGRAPHIC)  
SW/4 CHERRY CREEK 15' QUADRANGLE



Mapped, edited, and published by the Geological Survey

Control by USGS and USC&GS

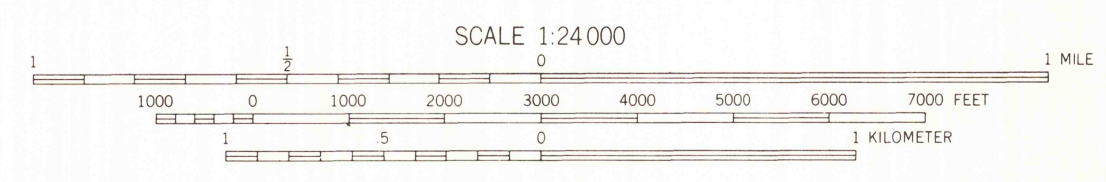
Topography from aerial photographs by photogrammetric methods. Aerial photographs taken 1953. Field check 1954

Polyconic projection, 1927 North American datum  
10,000-foot grid based on New York coordinate system,  
west zone

Unchecked elevations are shown in brown

Map photoinspected 1976  
No major culture or drainage changes observed

TRUE NORTH  
MAGNETIC NORTH  
APPROXIMATE MEAN  
DECLINATION, 1954



CONTOUR INTERVAL 10 FEET  
DATUM IS MEAN SEA LEVEL



ROAD CLASSIFICATION  
Heavy-duty ——— Light-duty ———  
Medium-duty ——— Unimproved dirt ———  
U. S. Route ——— State Route ———

HAMLET, N. Y.  
SW/4 CHERRY CREEK 15' QUADRANGLE  
N4215-W7907.5/7.5

1954  
PHOTOINSPECTED 1976

THIS MAP COMPLIES WITH NATIONAL MAP ACCURACY STANDARDS  
FOR SALE BY U. S. GEOLOGICAL SURVEY  
DENVER, COLORADO 80225, OR RESTON, VIRGINIA 22092  
A FOLDER DESCRIBING TOPOGRAPHIC MAPS AND SYMBOLS IS AVAILABLE ON REQUEST

USGS NMD HISTORICAL MAP  
MAY 13 1991  
REC'D FILE COPY