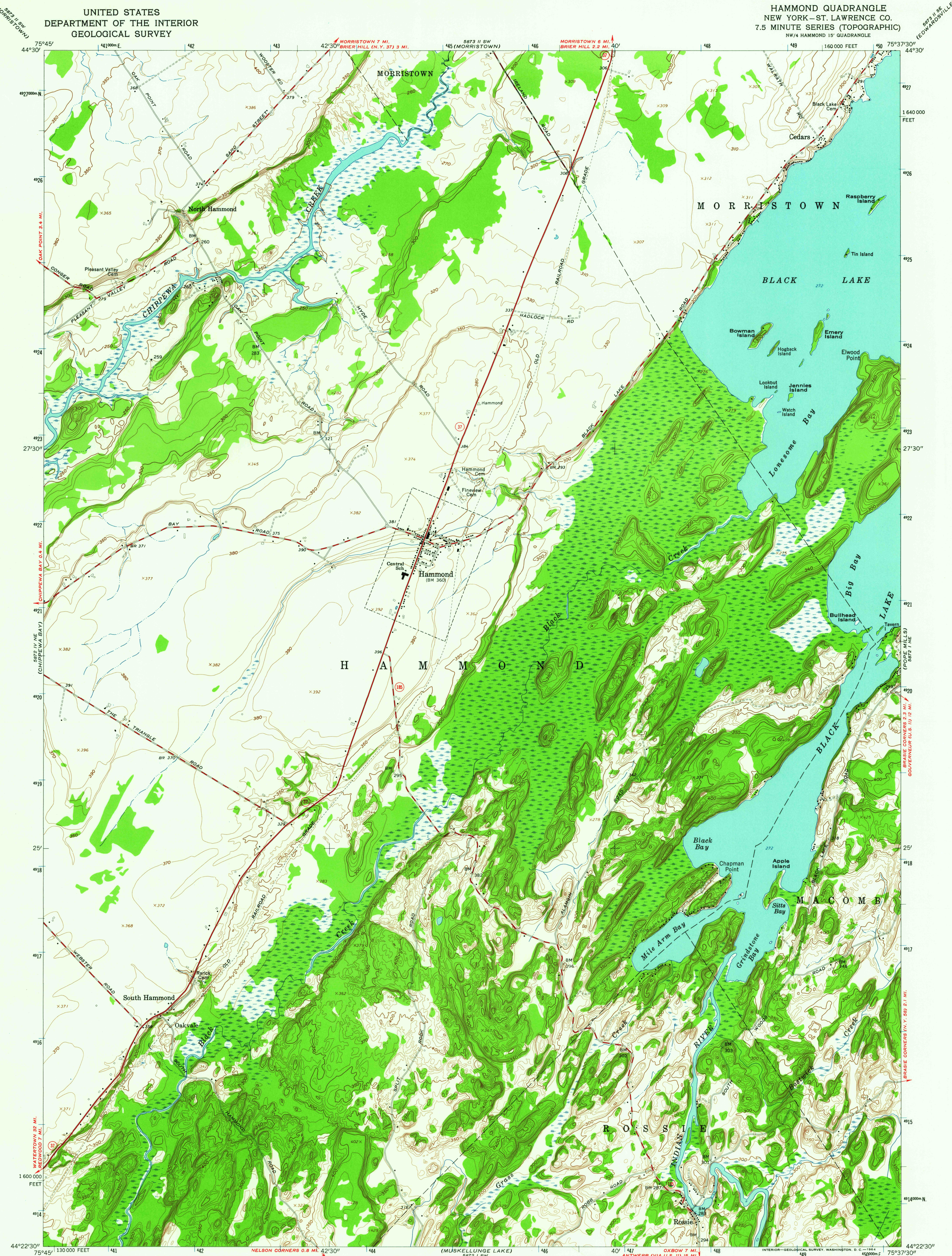
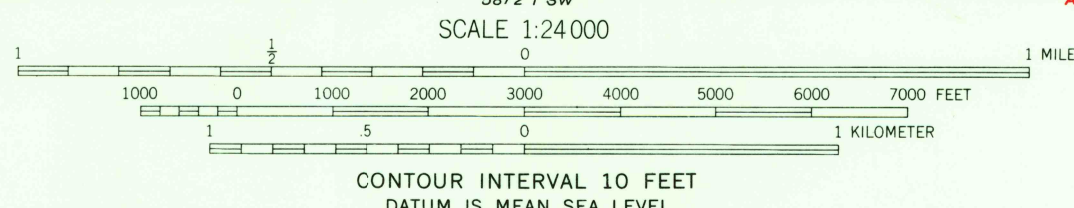
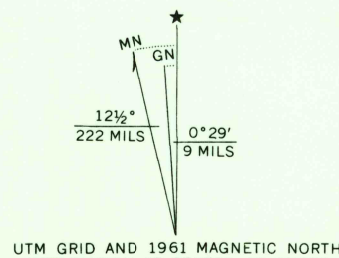


UNITED STATES
DEPARTMENT OF THE INTERIOR
GEOLOGICAL SURVEY

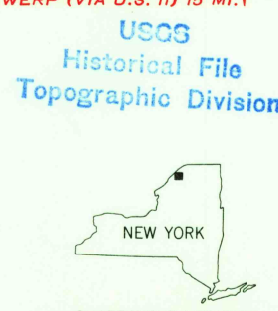
HAMMOND QUADRANGLE
NEW YORK—ST. LAWRENCE CO.
7.5 MINUTE SERIES (TOPOGRAPHIC)
NW/4 HAMMOND 15' QUADRANGLE



Mapped by the Army Map Service
Edited and published by the Geological Survey
Control by USGS, USC&GS, TVA, and USCE
Topography by photogrammetric methods from aerial
photographs taken 1947. Field checked 1949
Revised by the Geological Survey 1961
Polyconic projection. 1927 North American datum
10,000-foot grid based on New York coordinate system,
east zone
1000-meter Universal Transverse Mercator grid ticks,
zone 18, shown in blue



THIS MAP COMPLIES WITH NATIONAL MAP ACCURACY STANDARDS
FOR SALE BY U. S. GEOLOGICAL SURVEY, WASHINGTON 25, D. C.
A FOLDER DESCRIBING TOPOGRAPHIC MAPS AND SYMBOLS IS AVAILABLE ON REQUEST



ROAD CLASSIFICATION
Heavy-duty ——— Light-duty ———
Medium-duty ——— Unimproved dirt ———
State Route

HAMMOND, N. Y.
NW/4 HAMMOND 15' QUADRANGLE
N4422.5—W7537.5/7.5

1961
AMS 5872 1 NW—SERIES V821

FEB 19 1964

3055